



Our community plan for Surbiton



Our community plan was created using ideas from Surbiton residents and will evolve as our priorities as a neighbourhood change. The plan helps to inform the local council committee and decisions about the award of grant funding.

We want to hear from anyone who lives, works or studies in Surbiton. We'll bring our plan to neighbourhood events and have them at local community hubs.

What's our vision?

To make Surbiton an even better place to live by working closely with communities on local projects that improve our health and wellbeing.

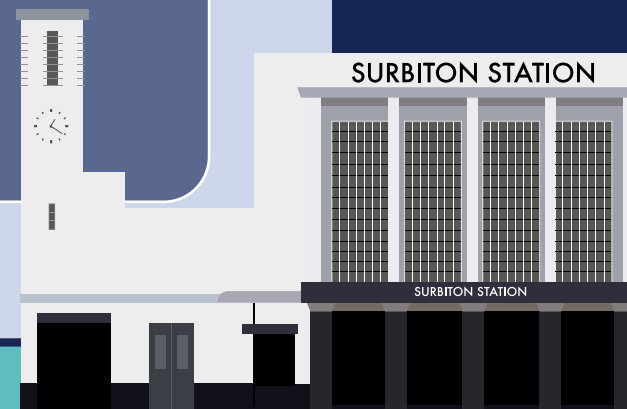
We want to hear from you if you have a project that helps us achieve our aims of:

- developing, promoting and enhancing Surbiton's parks, streets and open spaces
- implementing innovative local projects which benefit and attract residents and businesses into the area
- encouraging the setting up and maintenance of community hubs and forums, 'Friends of' groups and resident associations

What's in the plan this year?

The plan is focused on supporting projects which will make the most of our neighbourhood, including:

- enhancing Alexandra and Victoria Recreation Grounds, as well as Claremont Gardens and encouraging further conservation of the Hogsmill
- encouraging more community projects which promote art and culture
- working with communities to reinvigorate our high streets, bringing more visitors and businesses to the area



How can I share my ideas?

We want to hear from anyone who lives, works or studies in the neighbourhood. If you have an idea you'd like to share, email your friendly local team: neighbourhood_management@kingston.gov.uk





Community grants in action



Head2Head Sensory Theatre



Close to £1000 was awarded to Head2Head Sensory Theatre to enable them to bring their touring show, a Beauty & the Beast Multi-sensory pantomime, to the Cornerhouse theatre for two performances. These multi-sensory, interactive pantomime performances were specially designed for an audience of children and young people with a wide range of disabilities.



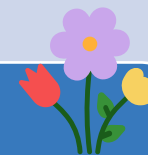
Fishponds Park signage



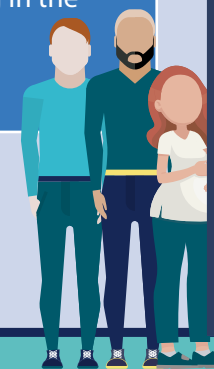
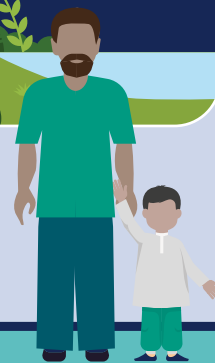
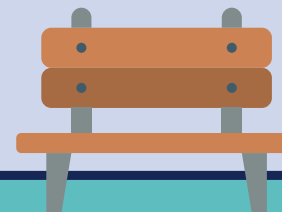
Upwards of £2,500 was awarded to The Friends of Fishponds to provide six new signs in the park; helping residents and visitors to better navigate and explore the space's history and wildlife. The first and largest of these signs is a welcome sign, designed by a local artist, which provides an overview of the park and its varied habitats.



Transforming Claremont Gardens



Over £64,000 was awarded to transform Claremont Gardens through the addition of new pathways and benches, as well as the revitalisation of the wildlife pond. An array of water-loving plants were added to the newly shaped, relined pond, in addition to an eco-friendly dipping platform, crafted entirely from recycled plastics, which allows children to learn about the wildlife living and growing in the water below.



How do I get involved?

You are eligible to bid for funding as a not-for-profit, voluntary or community organisation, or a faith group.

If you'd like to talk to someone about grants, email grants@kingston.gov.uk

For more information and to apply for a community grant, visit www.kingston.gov.uk/communitygrants

