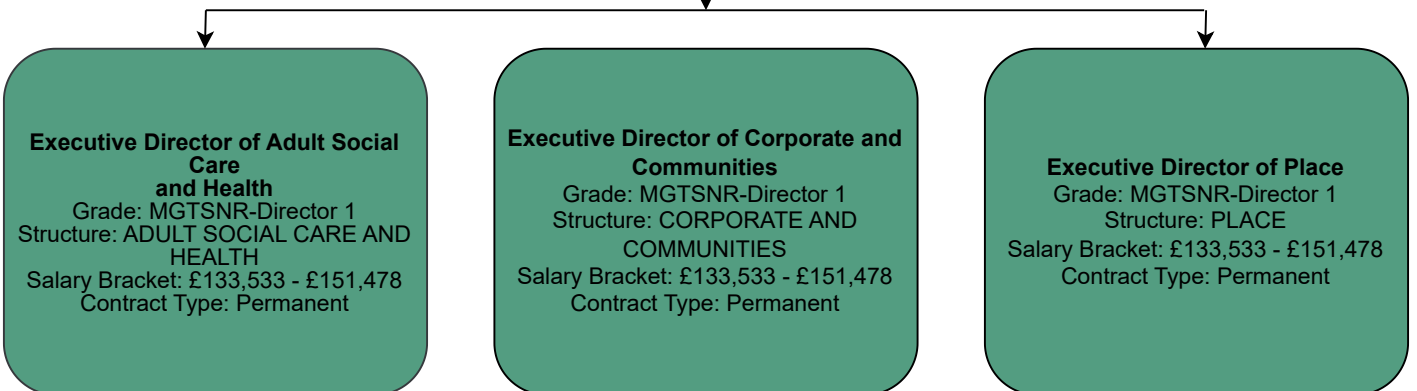
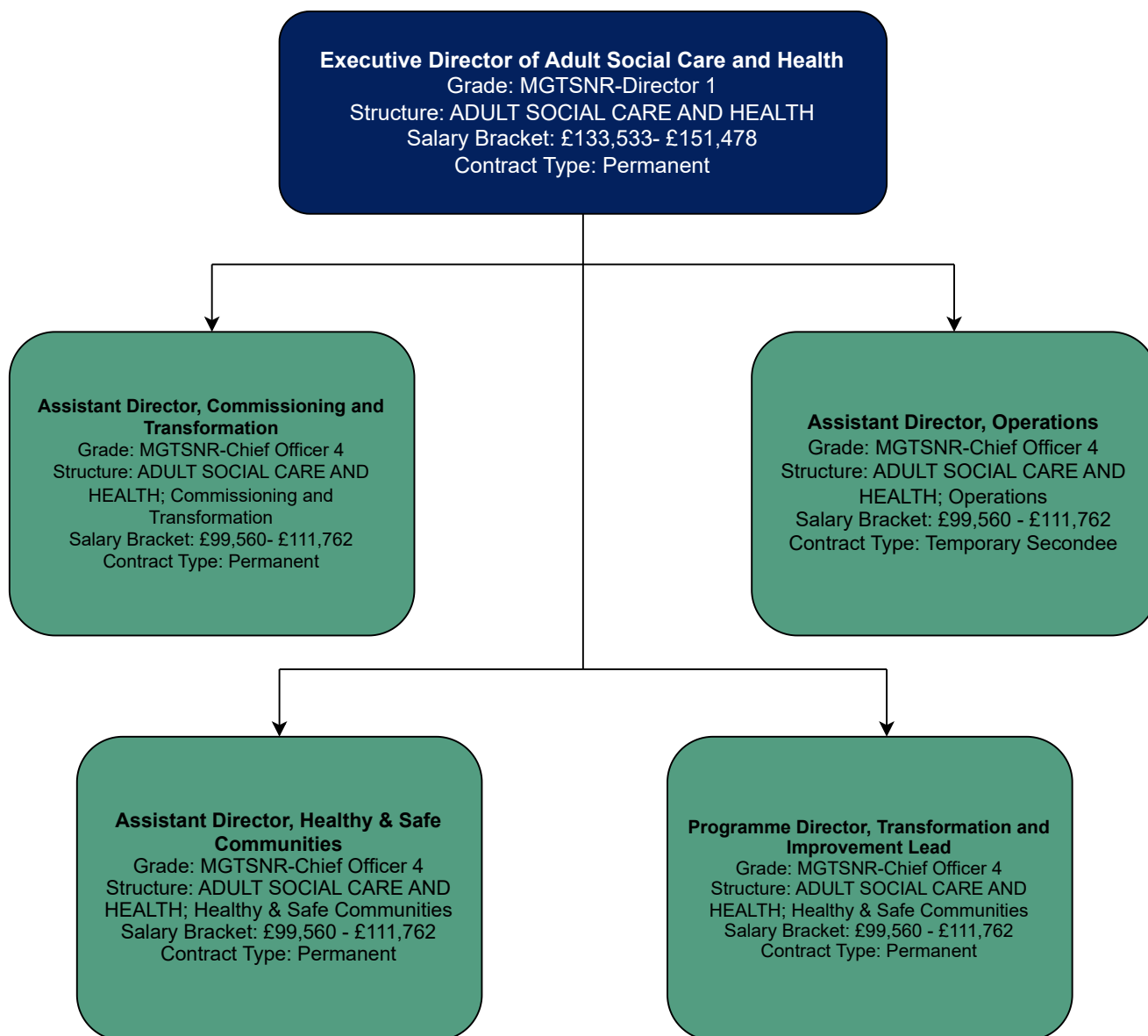


Royal Borough of Kingston upon Thames
Organisation Chart
as of
January 2024

Chief Executive

Grade: MGTCHX-Chief Executive
Structure: CHIEF EXECUTIVE'S, Chief Executive's Department, Chief Executive's Section
Salary Bracket: £175,405 - £199,333
Max Salary: £199,333
Contract Type: Permanent
Post Holder: Sarah Ireland





Executive Director of Corporate and Communities
Grade: MGTSNR-Director 1
Structure: CORPORATE AND COMMUNITIES
Salary Bracket: £133,533- £151,478
Contract Type: Permanent

Assistant Director, Contracts & Commercial

Grade: MGTSNR-Chief Officer 4
Structure: CORPORATE AND COMMUNITIES; Contracts & Commercial
Salary Bracket: £99,560- £111,762
Contract Type: Permanent

Future Workplace Programme Director

Grade: MGTSNR-Chief Officer 4
Structure: CORPORATE AND COMMUNITIES; Corporate Transformation Hub
Salary Bracket: £99,560- £111,762
Contract Type: Temporary Seconded/Fixed Term

Assistant Director, Culture, Communities & Engagement

Grade: MGTSNR-Chief Officer 4
Structure: CORPORATE AND COMMUNITIES; Culture, Communities & Engagement
Salary Bracket: £99,560- £111,762
Contract Type: Permanent

Assistant Director, Digital and IT

Grade: MGTSNR-Chief Officer 4
Structure: CORPORATE AND COMMUNITIES; Digital and IT (Shared Service)
Salary Bracket: £99,560- £111,762
Contract Type: Permanent

General Counsel

Grade: MGTSNR-Chief Officer 4
Structure: CORPORATE AND COMMUNITIES; Governance & Law
Salary Bracket: £99,560- £111,762
Contract Type: Permanent

Assistant Director, People & OD

Grade: MGTSNR-Chief Officer 4
Structure: CORPORATE AND COMMUNITIES; Human Resources and Organisational Development (Shared Service)
Salary Bracket: £99,560- £111,762
Contract Type: Permanent

Assistant Director, Transportation, Highways and Regulatory Services

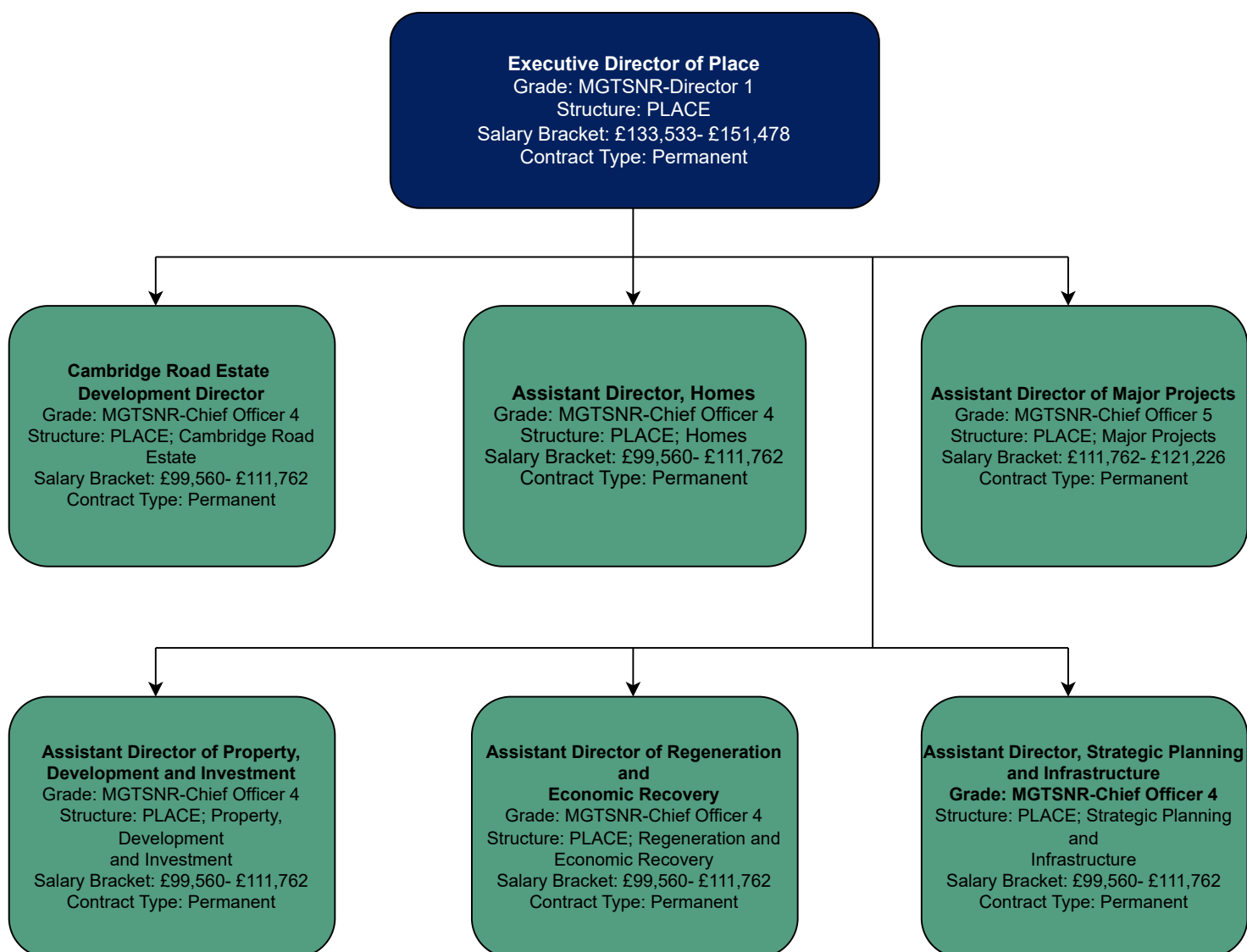
Grade: MGTSNR-Chief Officer 4
Structure: CORPORATE AND COMMUNITIES; Transportation, Highways and Regulatory Services (Shared Service)
Salary Bracket: £99,560- £111,762
Contract Type: Permanent

South London Waste Partnership Director

Grade: MGTSNR-Chief Officer 4
Structure: CORPORATE AND COMMUNITIES; Contracts & Commercial; Contracts ;South London Waste Partnership
Salary Bracket: £99,560- £111,762
Contract Type: Permanent



THE ROYAL BOROUGH OF
KINGSTON
UPON THAMES



Contact Details

Sarah Ireland - Chief Executive - sarah.ireland@kingston.gov.uk

Samantha Morrison - Executive Director of Adult Social Care and Health - sam.morrison@kingston.gov.uk

Vacant - Assistant Director, Commissioning and Transformation

Iona Lidlington - Assistant Director, Healthy & Safe Communities - iona.lidlington@kingston.gov.uk

Vacant - Assistant Director, Operations

Vacant - Executive Director of Corporate and Communities

Charlotte Rohan - Assistant Director, Contracts & Commercial - charlotte.rohan@kingston.gov.uk

Tessa Cole - Programme Director - Transformation and Improvement Lead - tessa.cole@kingston.gov.uk

Lilian Brett - Future Workplace Programme Director - lilian.brett@kingston.gov.uk

Louise Footner - Assistant Director, Culture, Communities & Engagement - louise.footner@kingston.gov.uk

Steve O'Connor - Assistant Director Digital and IT - steve.oconnor@kingston.gov.uk

Lauren McCann - General Counsel - lauren.mccann@kingston.gov.uk

Shona Mason - Assistant Director, People & OD - shona.mason@kingston.gov.uk

Matthew Hill - Assistant Director, Transportation, Highways and Regulatory Services - matthew.hill@kingston.gov.uk

Andrea Keys - South London Waste Partnership Director - andrea.keys@kingston.gov.uk

Matthew Essex - Executive Director of Place - matthew.essex@kingston.gov.uk

Elaine Taylor - Cambridge Road Estate Development Director - elaine.taylor@kingston.gov.uk

Wale Adetoro - Assistant Director, Homes - wale.adetoro@kingston.gov.uk

Siddiqah Islam - Assistant Director of Major Projects - sidiqqa.islam@kingston.gov.uk

Jonathan King - Assistant Director of Property, Development and Investment - jonathan.king@kingston.gov.uk

Duncan Brown - Assistant Director of Regeneration and Economic Recovery - duncan.brown@kingston.gov.uk

Tim Naylor - Assistant Director, Strategic Planning and Infrastructure - tim.naylor@kingston.gov.uk



THE ROYAL BOROUGH OF
KINGSTON
UPON THAMES