

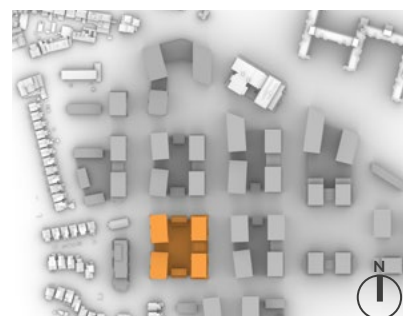
BLOCK E - 1 of 2 - Seventh Floor

ROOM REF.	ROOM USE	DAYLIGHT QUANTUM	DAYLIGHT DISTRIBUTION		SUNLIGHT QUANTUM (PROBABLE SUNLIGHT HOURS)	
		ADF (%)	NSL (%)	RDC	ANNUAL	WINTER
<b>BLOCK E - 1 OF 2 - SEVENTH FLOOR</b>						
1142	Bedroom	2.6	84	MET		
1143	L/K/D	3.7	100	N/A		
1144	Bedroom	1.9	93	MET		
1145	L/K/D	3.3	100	N/A	38	10
1146	Bedroom	2.2	92	MET		
1147	Living Room	2.6	99	MET	20	7
1148	Bedroom	2.4	93	MET		
1149	Bedroom	2.2	93	MET		
1150	Bedroom	2.1	98	MET		
1151	L/K/D	4.4	100	N/A	80	24
1152	Bedroom	2.6	97	MET		
1153	L/K/D	2.5	97	N/A	71	20
1154	Bedroom	3.3	86	MET		
1155	Bedroom	2.4	75	MET		
1156	Bedroom	4.1	89	MET		
1157	Bedroom	2.2	92	MET		
1158	L/K/D	4.3	99	N/A		
1159	Bedroom	2.4	94	MET		
1160	L/K/D	2.9	99	N/A	28	6
1161	Bedroom	1.5	72	MET		
1162	Bedroom	3.3	93	MET		
1163	Living Room	1.7	90	MET	12	3
1164	Living Room	1.6	91	MET	13	4
1165	Bedroom	3.3	93	MET		
1166	Bedroom	2.2	81	MET		
1167	Bedroom	4	99	MET		
1168	Bedroom	2.9	95	MET		
1169	Bedroom	2.2	93	MET		
1170	Bedroom	3.6	99	MET		
1171	L/K/D	1.9	100	N/A	25	7
1172	L/K/D	1.8	97	N/A	22	4
1173	Bedroom	3.8	99	MET		
1174	Bedroom	1.7	97	MET		
1175	Bedroom	2.5	98	MET		
1176	Bedroom	3.6	100	N/A		
1177	Living Room	3.9	97	N/A	80	24
1178	Bedroom	1.9	84	MET		
1179	L/K/D	4.1	96	N/A	76	23
1180	Bedroom	3.5	96	MET		
1181	Bedroom	3.1	93	MET		
1182	Living Room	3.5	99	MET		
1183	Bedroom	1.9	96	MET		
1184	Bedroom	2.6	92	MET		
1185	L/K/D	3.3	99	MET		
1186	L/K/D	3.2	96	MET		
1187	Bedroom	2.6	88	MET		
1188	Bedroom	2	84	MET		
1189	Living Room	2.9	95	MET		

Table 35: Assessment Data



Fig. 47: Floor Plan



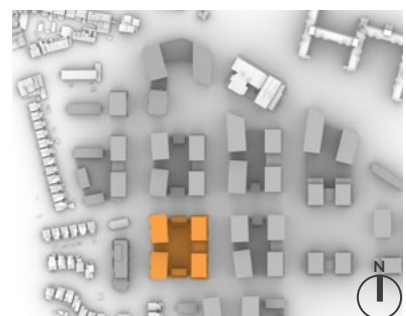
BLOCK E - 2 of 2 - Seventh Floor

ROOM REF.	ROOM USE	DAYLIGHT QUANTUM	DAYLIGHT DISTRIBUTION		SUNLIGHT QUANTUM (PROBABLE SUNLIGHT HOURS)	
		ADF (%)	NSL (%)	RDC	ANNUAL	WINTER
<b>BLOCK E - 2 OF 2 - SEVENTH FLOOR</b>						
1190	Bedroom	2	81	MET		
1191	L/K/D	3.7	100	N/A	78	26
1192	Bedroom	2.2	93	MET		
1193	Bedroom	3.1	99	MET		
1194	L/K/D	3	100	N/A	80	27
1195	Bedroom	2.3	97	MET		
1196	Living Room	2.7	98	MET		
1197	Bedroom	2.4	93	MET		
1198	Bedroom	2.4	98	MET		
1199	Bedroom	2.7	97	MET		
1200	L/K/D	3.7	100	N/A		
1201	Bedroom	1.6	41	MET		
1202	L/K/D	4.1	99	N/A	41	11
1203	Bedroom	2.8	96	MET		

Table 36: Assessment Data



Fig. 48: Floor Plan



## BLOCK E - Eighth Floor

ROOM REF.	ROOM USE	DAYLIGHT QUANTUM	DAYLIGHT DISTRIBUTION		SUNLIGHT QUANTUM (PROBABLE SUNLIGHT HOURS)	
		ADF (%)	NSL (%)	RDC	ANNUAL	WINTER
<b>BLOCK E - EIGHTH FLOOR</b>						
1204	Bedroom	2.8	92	MET		
1205	L/K/D	3.9	100	N/A		
1206	Bedroom	2	93	MET		
1207	L/K/D	3.4	100	N/A	38	10
1208	Bedroom	2.3	92	MET		
1209	Living Room	2.6	99	MET	20	7
1210	Bedroom	2.4	93	MET		
1211	Bedroom	2.2	93	MET		
1212	Bedroom	2.1	98	MET		
1213	L/K/D	4.7	100	N/A	85	28
1214	Bedroom	3	97	MET		
1215	L/K/D	2.8	100	N/A	77	25
1216	Bedroom	3.6	93	MET		
1217	Bedroom	2.6	81	MET		
1218	Bedroom	4.5	96	MET		
1219	Bedroom	2.2	91	MET		
1220	L/K/D	4.3	99	N/A		
1221	Bedroom	2.7	99	MET		
1222	L/K/D	3.1	99	N/A	34	7
1223	Bedroom	1.5	80	MET		
1224	Bedroom	3.9	92	MET		
1225	L/K/D	1.4	99	MET	12	4
1226	Bedroom	3.3	95	MET		
1227	Bedroom	5.1	98	MET		
1228	L/K/D	2.2	99	N/A	27	8
1229	Living Room	2.4	94	N/A	25	6
1230	Bedroom	4.1	100	MET		
1231	Bedroom	1.8	97	MET		
1232	Bedroom	2.7	98	MET		
1233	Bedroom	3.6	100	N/A		
1234	Living Room	4.2	97	N/A	83	27
1235	Bedroom	2	94	MET		
1236	L/K/D	4.4	96	N/A	80	26
1237	Bedroom	3.6	96	MET		
1238	Bedroom	3.1	93	MET		
1239	Living Room	4.8	99	MET		
1240	Bedroom	3.3	99	MET		
1241	L/K/D	2.8	98	N/A	63	15
1242	Bedroom	3.6	93	MET		
1243	Bedroom	1.8	74	MET		
1340	Bedroom	2.2	71	MET		
1341	Bedroom	2.2	84	MET		

Table 37: Assessment Data

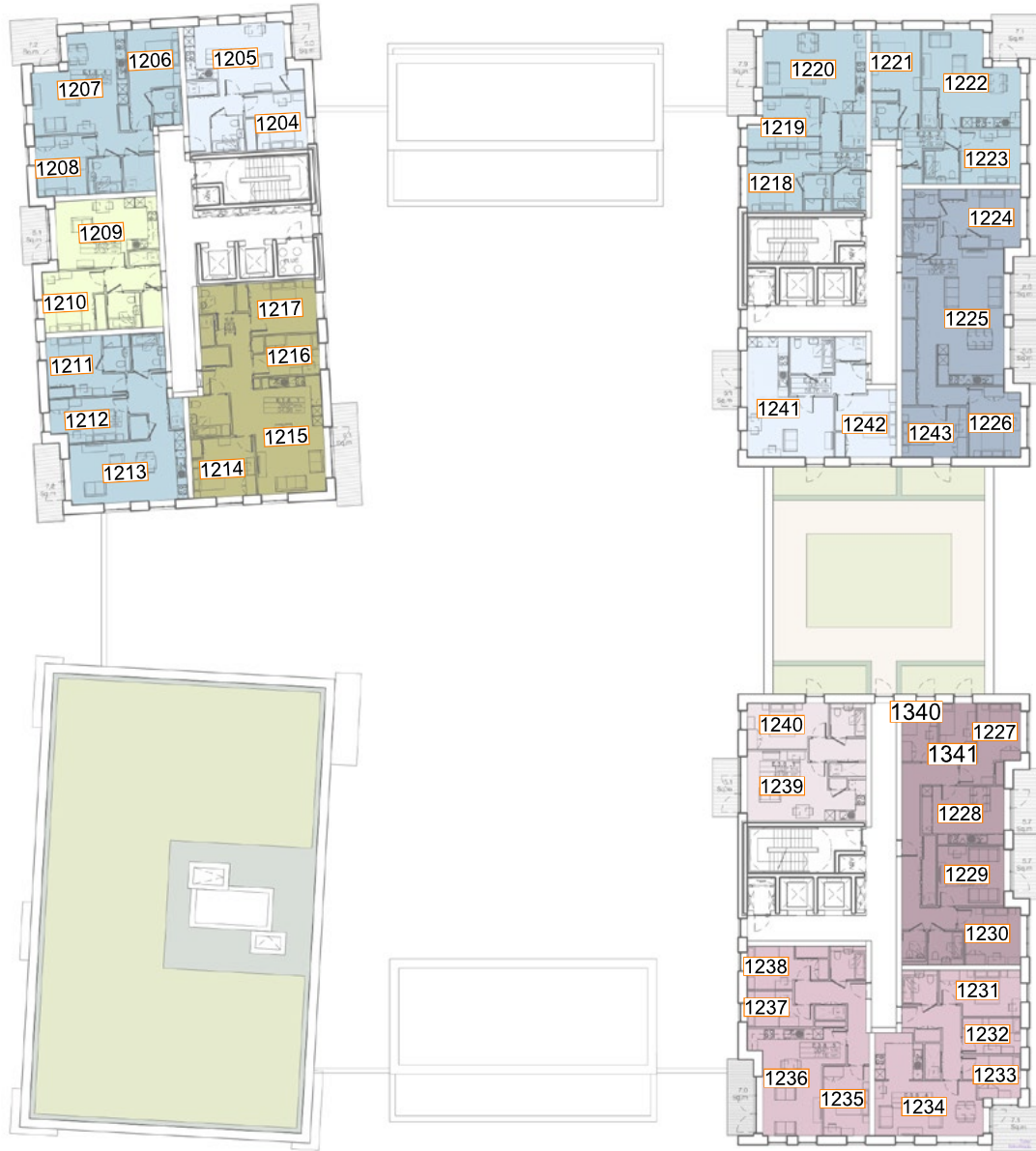
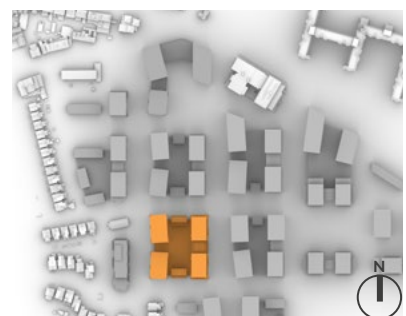


Fig. 49: Floor Plan



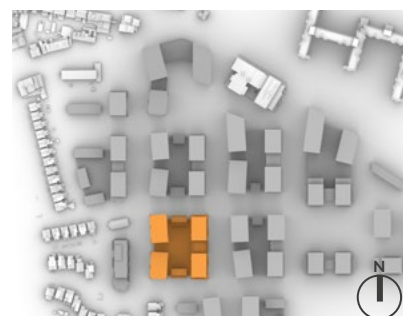
BLOCK E - Ninth Floor

ROOM REF.	ROOM USE	DAYLIGHT QUANTUM	DAYLIGHT DISTRIBUTION		SUNLIGHT QUANTUM (PROBABLE SUNLIGHT HOURS)	
		ADF (%)	NSL (%)	RDC	ANNUAL	WINTER
<b>BLOCK E - NINTH FLOOR</b>						
1244	Bedroom	3	95	MET		
1245	L/K/D	4	100	N/A		
1246	Bedroom	2	93	MET		
1247	L/K/D	3.5	100	N/A	39	10
1248	Bedroom	2.2	92	MET		
1249	Living Room	2.6	99	MET	20	7
1250	Bedroom	2.4	93	MET		
1251	Bedroom	2.2	93	MET		
1252	Bedroom	2.1	98	MET		
1253	L/K/D	4.9	100	N/A	85	28
1254	Bedroom	3.1	97	MET		
1255	L/K/D	3	100	N/A	78	26
1256	Bedroom	3	97	MET		
1257	Bedroom	2.8	98	MET		
1258	Bedroom	4.7	98	MET		
1259	Bedroom	2.6	98	MET		
1260	L/K/D	5	99	N/A		
1261	Bedroom	2.9	99	MET		
1262	L/K/D	3.4	99	N/A	36	7
1263	Bedroom	1.6	95	MET		
1264	Bedroom	4.3	98	MET		
1265	L/K/D	2	99	MET	19	6
1266	Bedroom	3.7	99	MET		
1267	Bedroom	2	88	MET		
1268	Bedroom	4.2	94	MET		
1269	L/K/D	4.2	98	N/A	70	21
1270	Bedroom	2.6	88	MET		
1271	L/K/D	3.5	100	N/A		
1272	Bedroom	3.3	97	N/A		
1273	Bedroom	2.2	93	MET		
1274	Bedroom	5	99	MET		
1275	Bedroom	2.7	97	MET		
1276	Bedroom	2.9	99	MET		
1277	Living Room	4.3	100	MET	41	11
1278	Kitchen	4.3	99	N/A		
1279	L/K/D	5.3	100	N/A	89	30
1280	Bedroom	1.2	94	MET		
1281	Bedroom	4.2	97	MET		

Table 38: Assessment Data



Fig. 50: Floor Plan





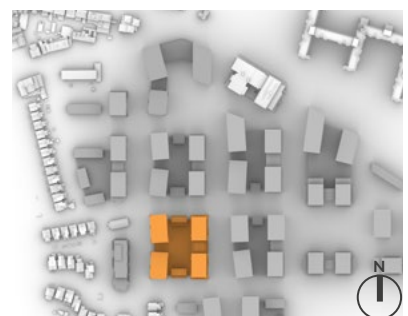
## BLOCK E - Tenth Floor

ROOM REF.	ROOM USE	DAYLIGHT QUANTUM	DAYLIGHT DISTRIBUTION		SUNLIGHT QUANTUM (PROBABLE SUNLIGHT HOURS)	
		ADF (%)	NSL (%)	RDC	ANNUAL	WINTER
<b>BLOCK E - TENTH FLOOR</b>						
1282	Bedroom	3.2	95	MET		
1283	L/K/D	4.1	100	N/A		
1284	Bedroom	2	93	MET		
1285	L/K/D	3.5	100	N/A	39	10
1286	Bedroom	2.3	92	MET		
1287	Living Room	2.6	99	MET	20	7
1288	Bedroom	2.4	93	MET		
1289	Bedroom	2.2	93	MET		
1290	Bedroom	2.1	98	MET		
1291	L/K/D	4.9	100	N/A	87	30
1292	Bedroom	3.1	97	MET		
1293	L/K/D	3.2	100	N/A	81	27
1294	Bedroom	3.2	99	MET		
1295	Bedroom	3	98	MET		
1296	Bedroom	4.5	94	MET		
1297	L/K/D	3.2	100	N/A		
1298	L/K/D	3.5	100	MET	16	2
1299	Bedroom	5.3	100	MET		
1300	Bedroom	4.8	99	MET		
1301	Bedroom	4.8	99	MET		
1302	L/K/D	3	99	N/A	81	27
1303	L/K/D	4.1	99	N/A	84	30
1304	Bedroom	2.3	92	MET		
1305	Bedroom	2.7	88	MET		
1306	L/K/D	3.9	100	N/A		
1307	Bedroom	3.1	97	N/A		
1308	Bedroom	2.3	93	MET		
1309	Bedroom	5	99	MET		
1310	Bedroom	2.6	97	MET		
1311	Bedroom	2.8	99	MET		
1312	Living Room	4.2	100	MET	41	11
1313	Kitchen	3.7	99	N/A		
1314	L/K/D	5.1	100	N/A	88	30
1315	Bedroom	1	94	MET		
1316	Bedroom	4.2	97	MET		

Table 39: Assessment Data



Fig. 51: Floor Plan



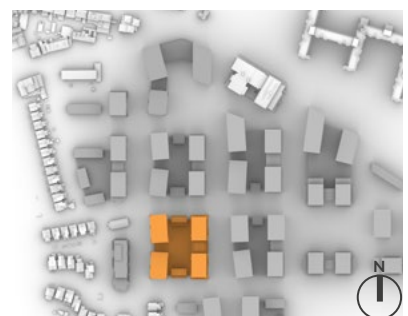
### BLOCK E - Eleventh Floor

ROOM REF.	ROOM USE	DAYLIGHT QUANTUM	DAYLIGHT DISTRIBUTION		SUNLIGHT QUANTUM (PROBABLE SUNLIGHT HOURS)	
		ADF (%)	NSL (%)	RDC	ANNUAL	WINTER
<b>BLOCK E - ELEVENTH FLOOR</b>						
1317	Bedroom	3.2	95	MET		
1318	L/K/D	4.5	100	N/A		
1319	Bedroom	2.1	93	MET		
1320	L/K/D	3.7	100	N/A	39	10
1321	Bedroom	2.3	92	MET		
1322	Living Room	3	99	MET	26	7
1323	Bedroom	2.4	93	MET		
1324	Bedroom	2.2	93	MET		
1325	Bedroom	2.1	98	MET		
1326	L/K/D	5.2	100	N/A	89	30
1327	Bedroom	3.1	97	MET		
1328	L/K/D	4.5	100	N/A	84	28
1329	Bedroom	3.4	99	MET		
1330	Bedroom	3.2	98	MET		
1331	Bedroom	4.7	94	MET		
1332	L/K/D	3.4	100	N/A		
1333	L/K/D	3.2	100	MET	15	3
1334	Bedroom	5.4	100	MET		
1335	Bedroom	4.9	99	MET		
1336	Bedroom	4.8	99	MET		
1337	L/K/D	3	99	N/A	83	28
1338	L/K/D	4.3	100	N/A	86	30
1339	Bedroom	2.4	92	MET		

Table 40: Assessment Data



Fig. 52: Floor Plan





**7 OUTLINE ELEMENTS PHASES 2-5  
DAYLIGHT AND SUNLIGHT ASSESSMENTS**

DAYLIGHT POTENTIAL ASSESSMENT - SITE-WIDE OVERVIEW



Fig. 53: Site-Wide VSC - View from South-West



Fig. 54: Site-Wide VSC - View from North-West

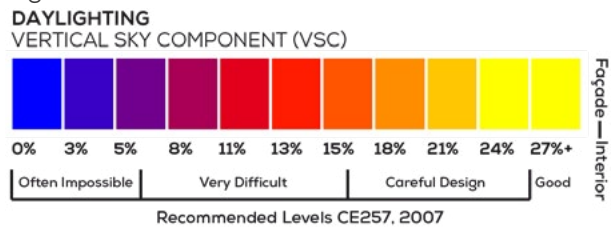




Fig. 55: Site-Wide VSC - View from North-East

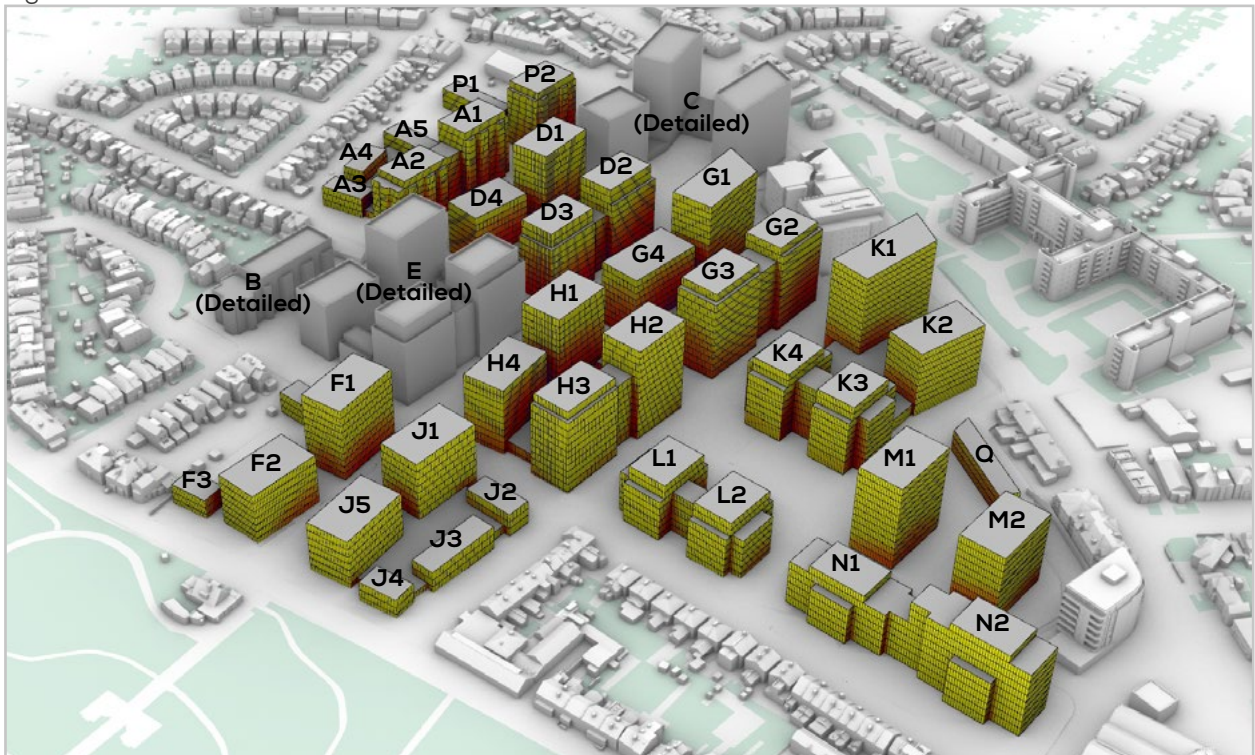


Fig. 56: Site-Wide VSC - View from South-East



SUNLIGHT POTENTIAL ASSESSMENT - SITE-WIDE OVERVIEW



Fig. 57: Site-Wide APSH - View from South-West



Fig. 58: Site-Wide APSH - View from South-East

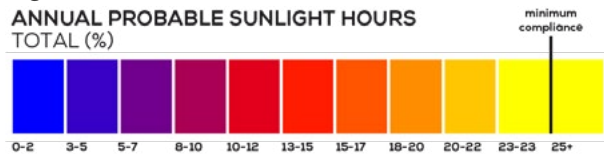
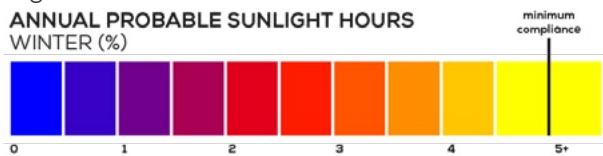




Fig. 59: Site-Wide WPSH - View from South-West



Fig. 60: Site-Wide WPSH - View from South-East



DAYLIGHT POTENTIAL ASSESSMENT - PLOT A

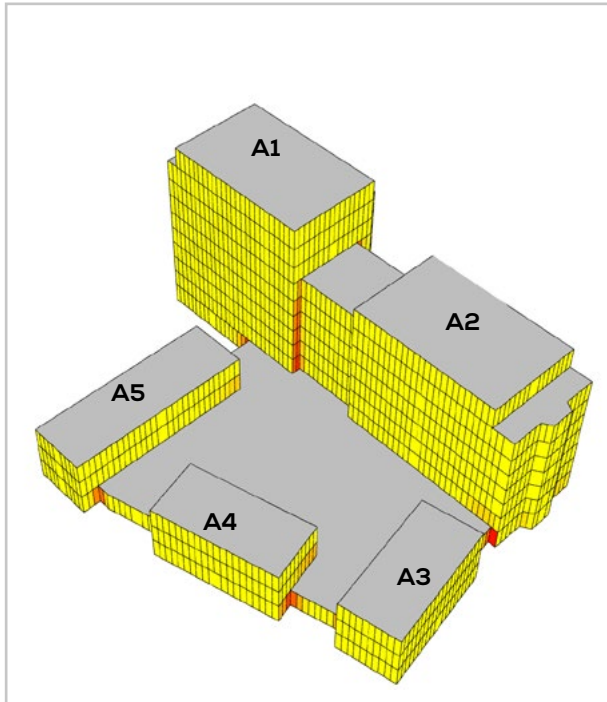


Fig. 61: Plot A - VSC - View 1

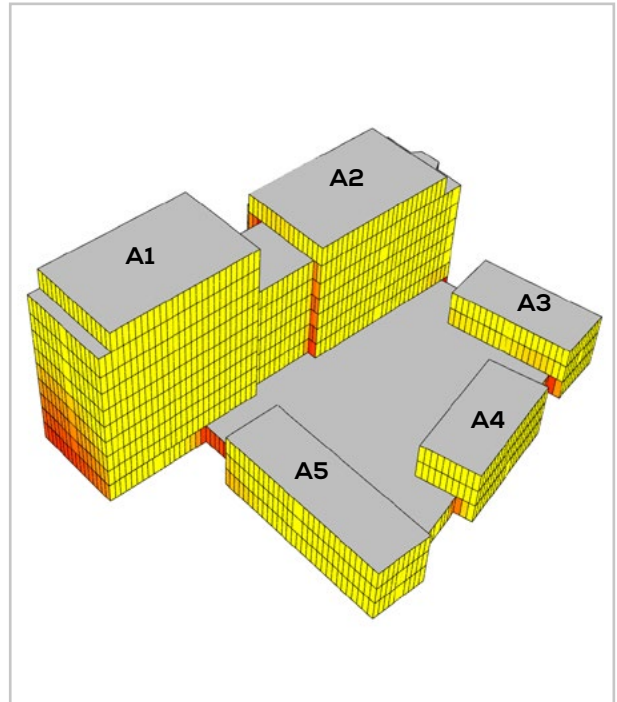


Fig. 62: Plot A - VSC - View 2

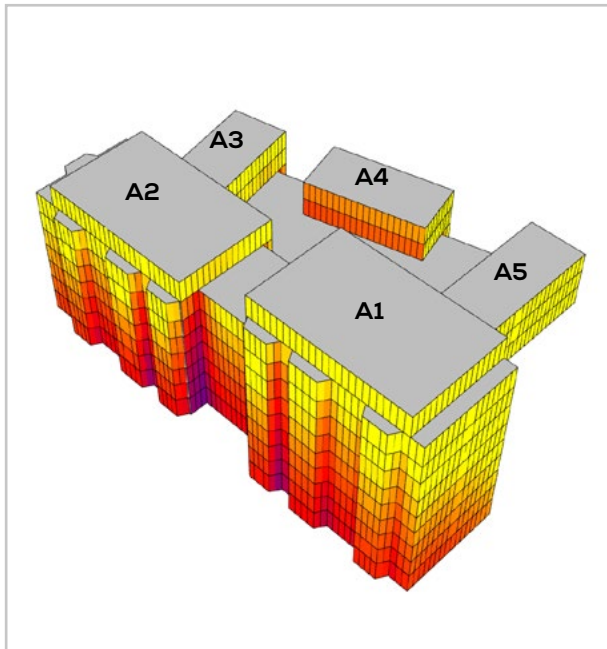


Fig. 63: Plot A - VSC - View 3

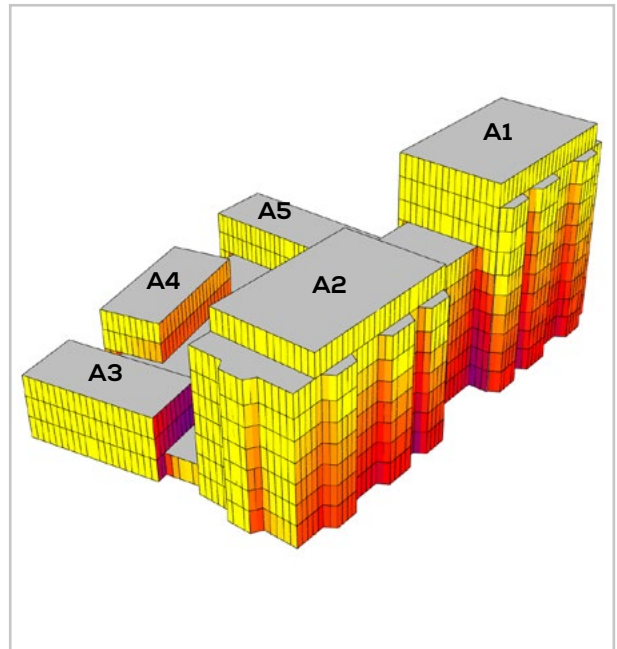
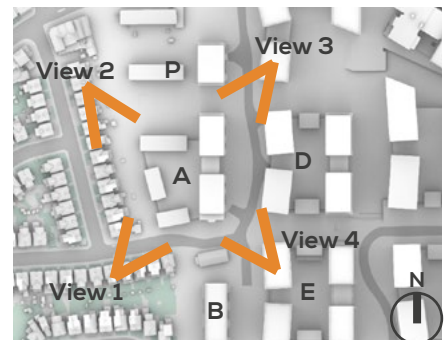
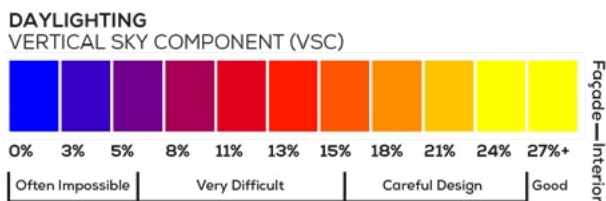


Fig. 64: Plot A - VSC - View 4



SUNLIGHT POTENTIAL ASSESSMENT - PLOT A

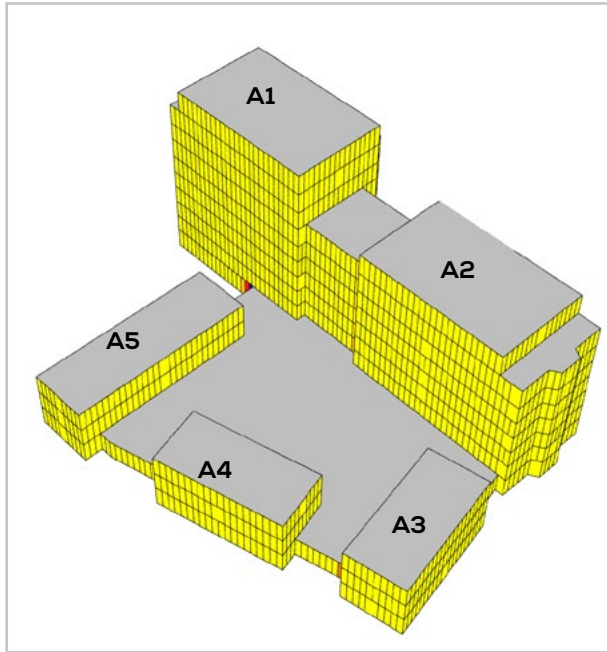


Fig. 65: Plot A - APSH - View 1

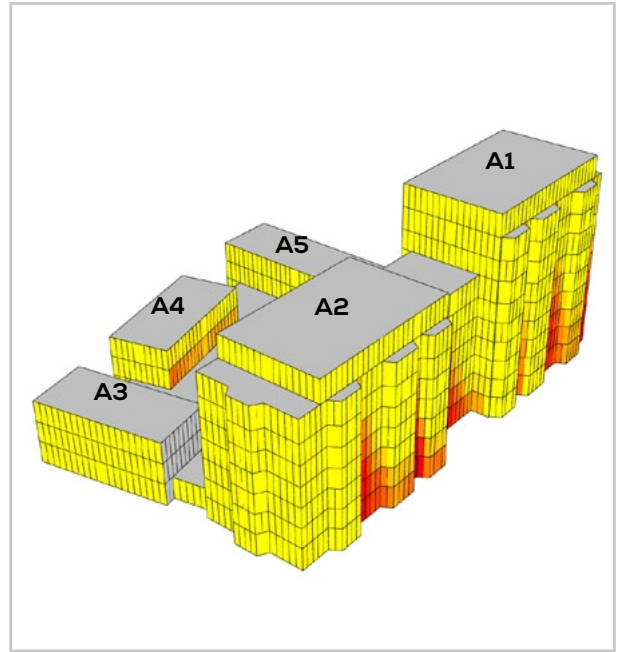
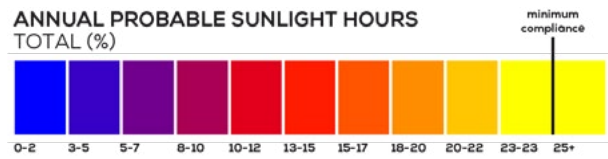


Fig. 66: Plot A - APSH - View 4

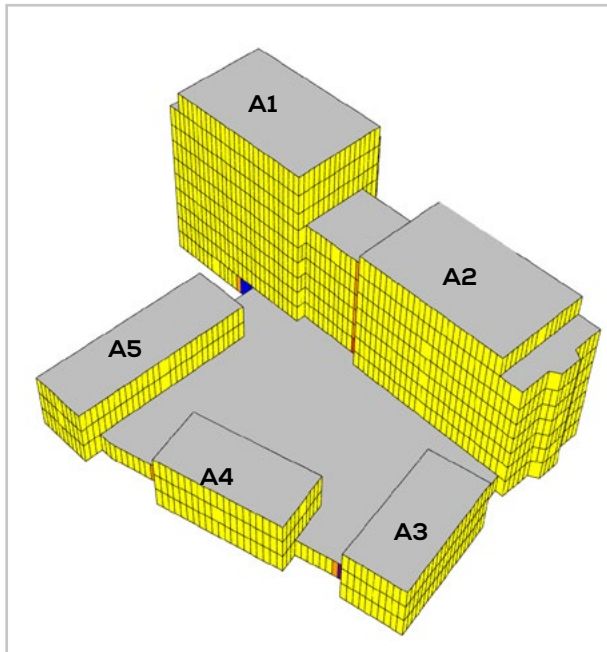


Fig. 67: Plot A - WPSH - View 1

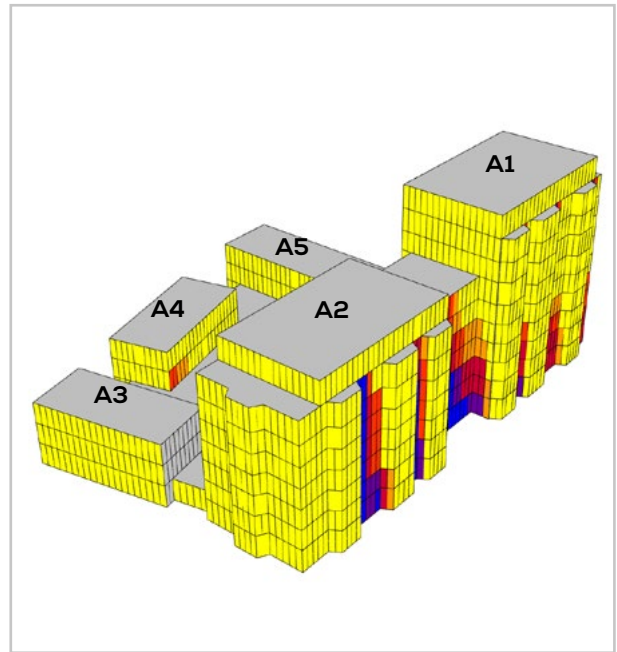
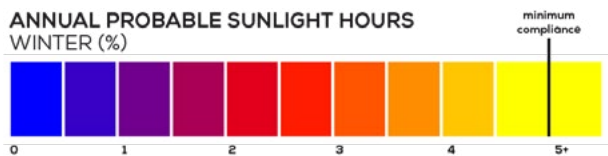


Fig. 68: Plot A - WPSH - View 4

DAYLIGHT POTENTIAL ASSESSMENT - PLOT D

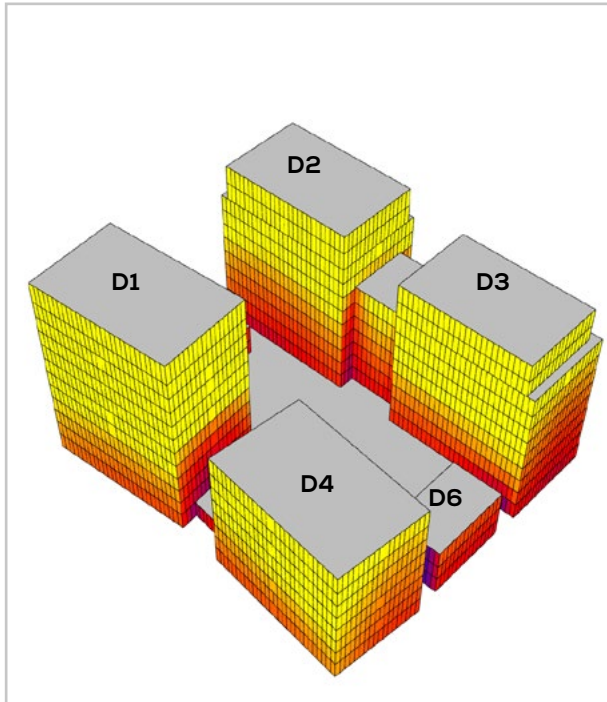


Fig. 69: Plot D - VSC - View 1

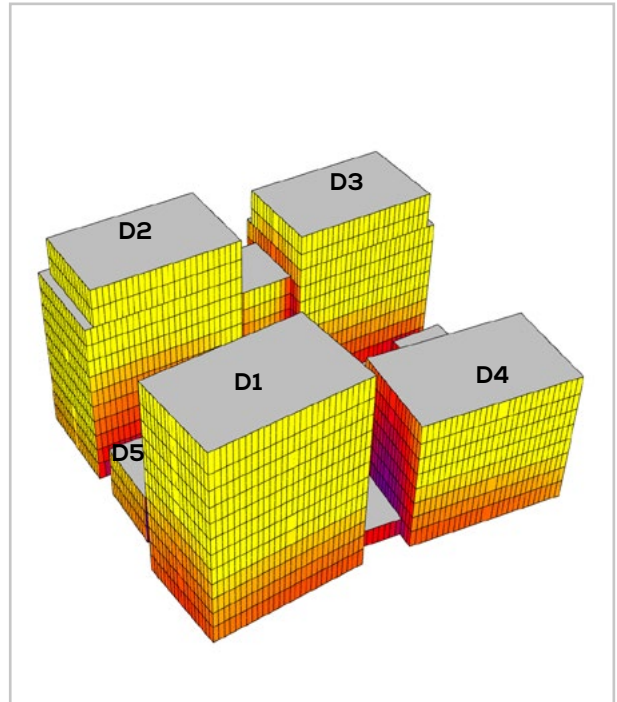


Fig. 70: Plot D - VSC - View 2

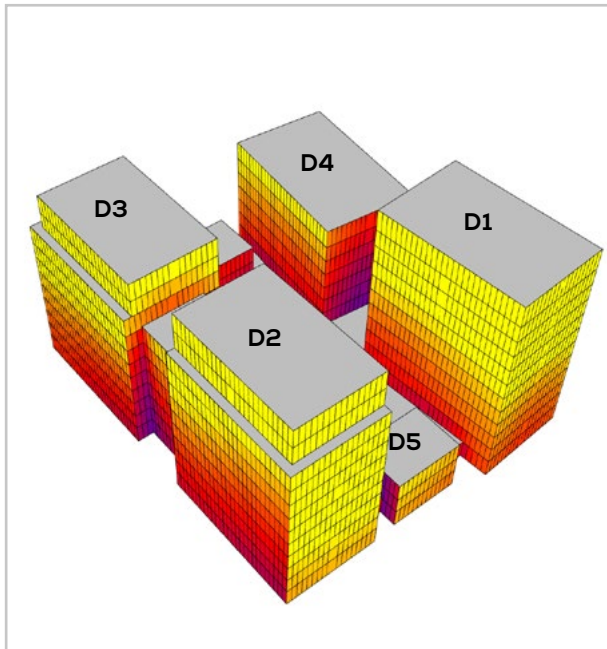


Fig. 71: Plot D - VSC - View 3

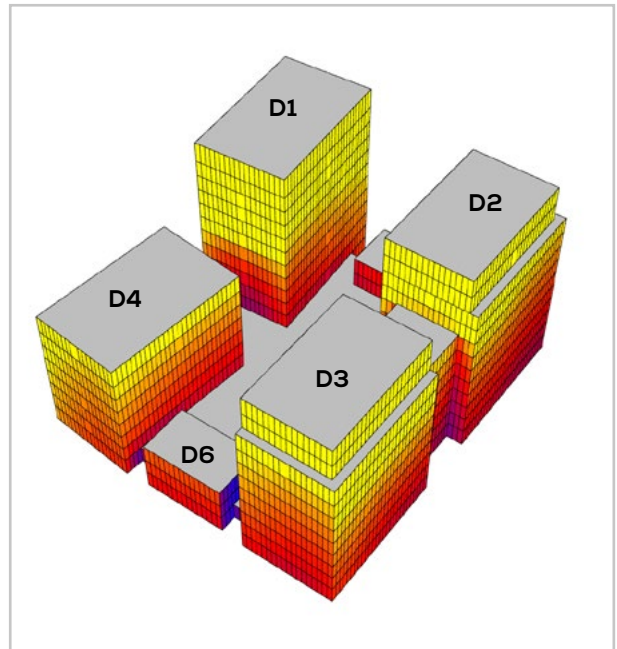
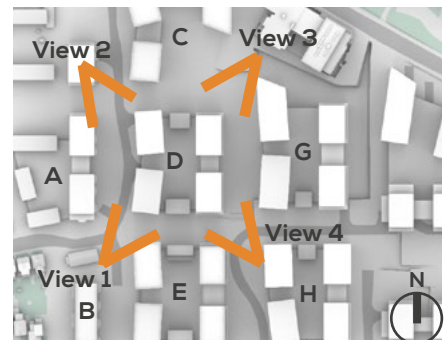
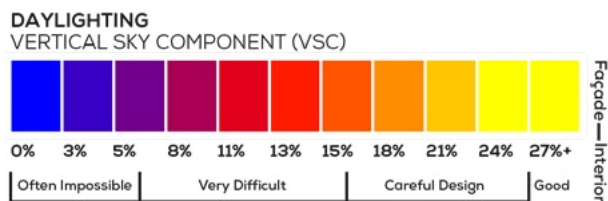


Fig. 72: Plot D - VSC - View 4



SUNLIGHT POTENTIAL ASSESSMENT - PLOT D

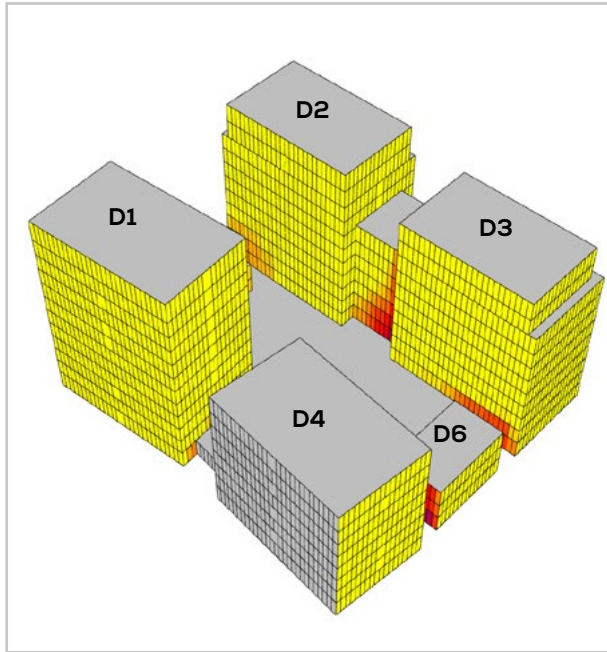


Fig. 73: Plot D - APSH - View 1

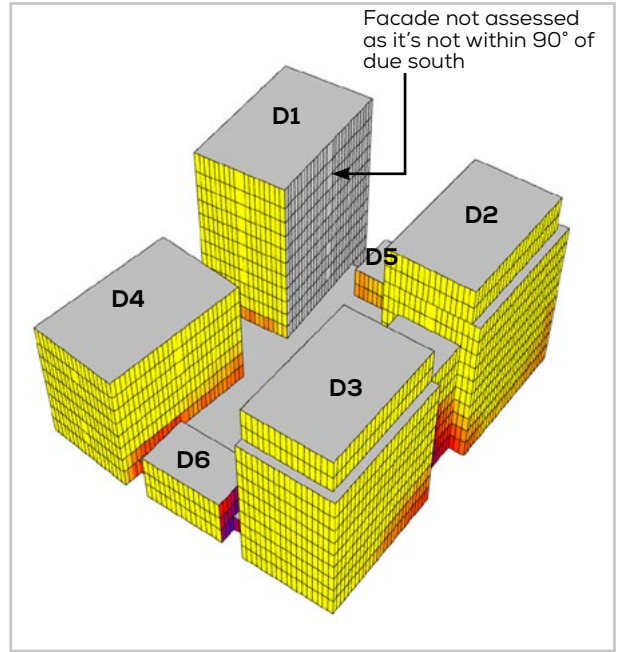
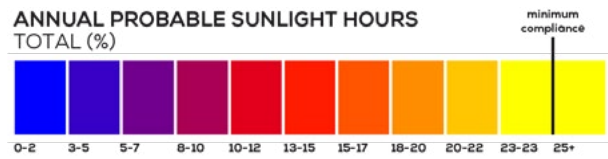


Fig. 74: Plot D - APSH - View 4

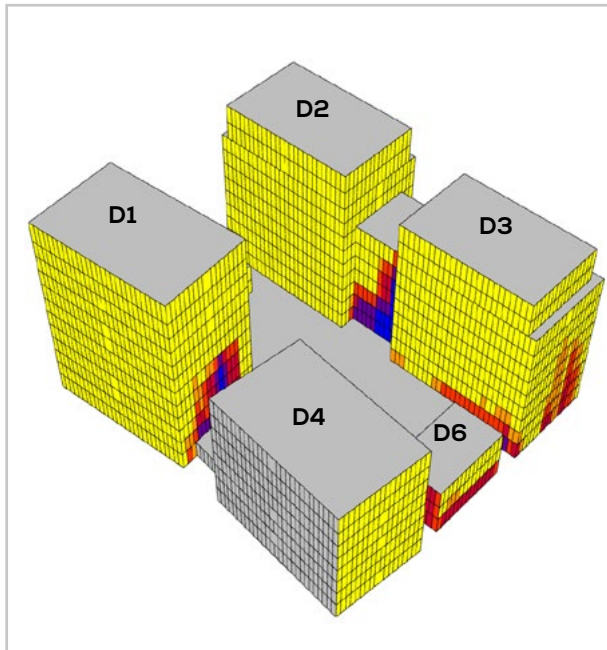


Fig. 75: Plot D - WPSH - View 1

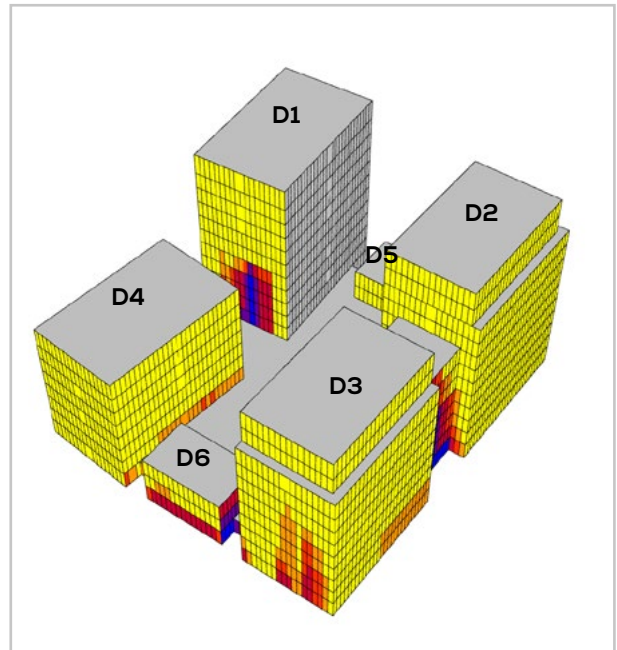
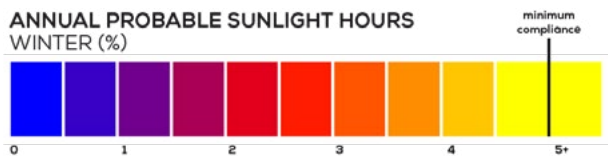


Fig. 76: Plot D - WPSH - View 4

DAYLIGHT POTENTIAL ASSESSMENT - PLOT F

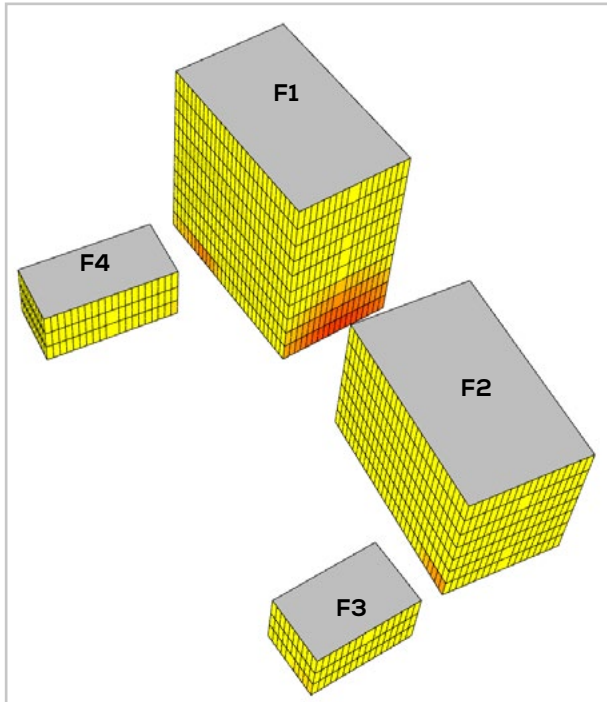


Fig. 77: Plot F - VSC - View 1

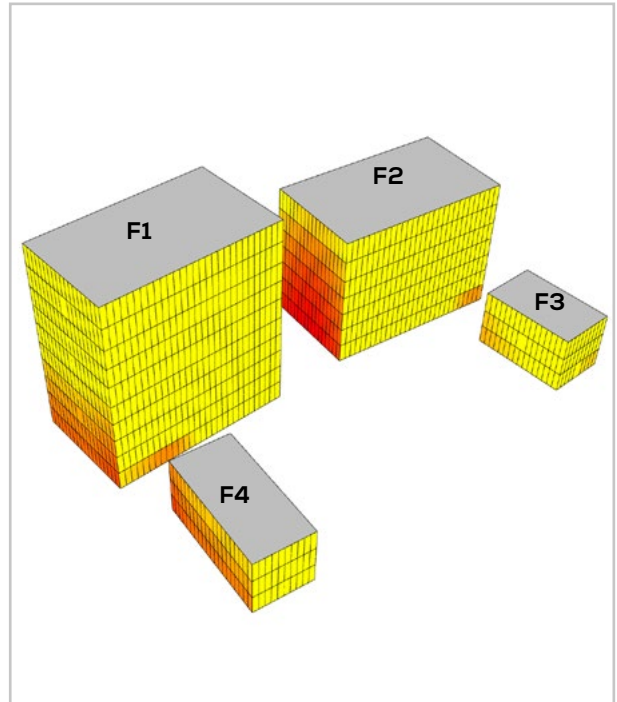


Fig. 78: Plot F - VSC - View 2

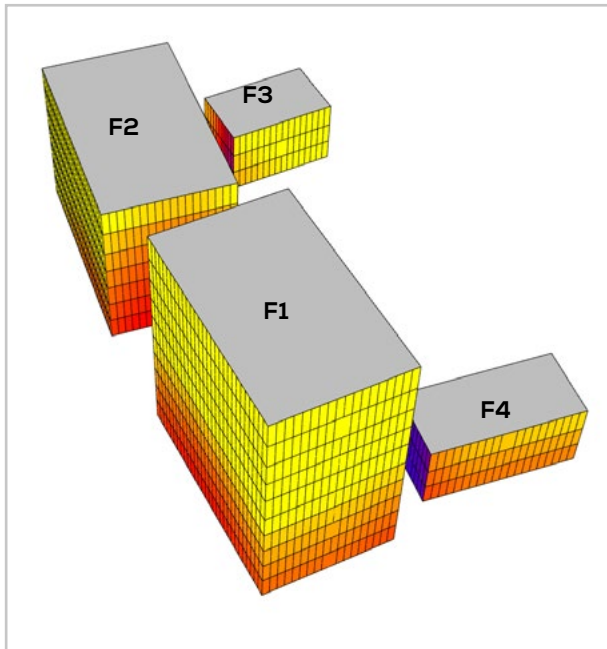


Fig. 79: Plot F - VSC - View 3

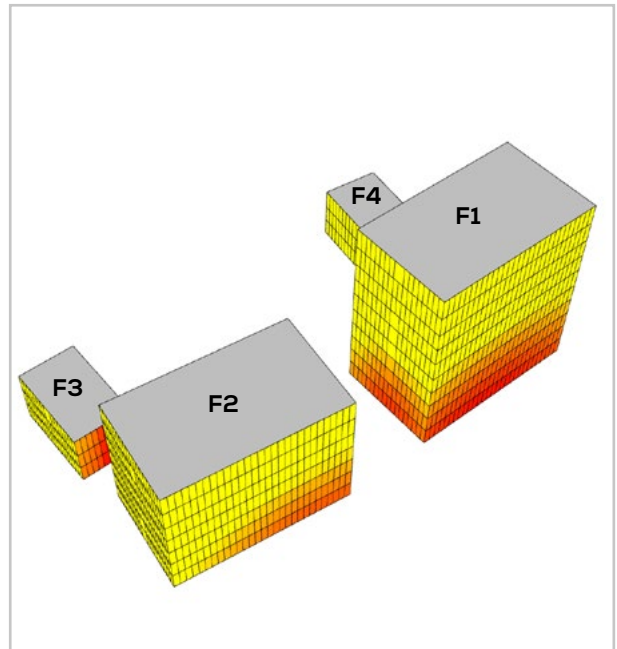
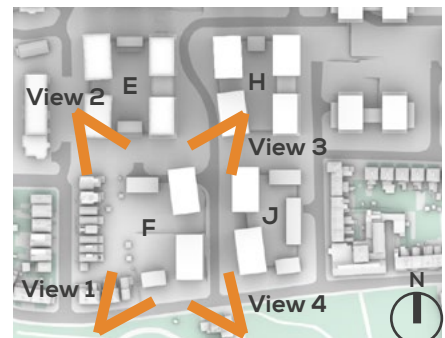
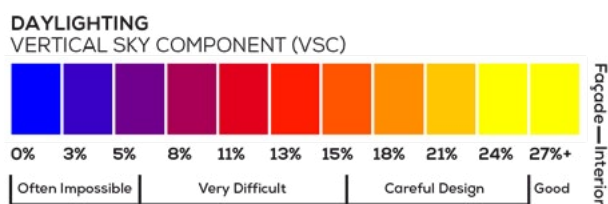


Fig. 80: Plot F - VSC - View 4



SUNLIGHT POTENTIAL ASSESSMENT - PLOT F

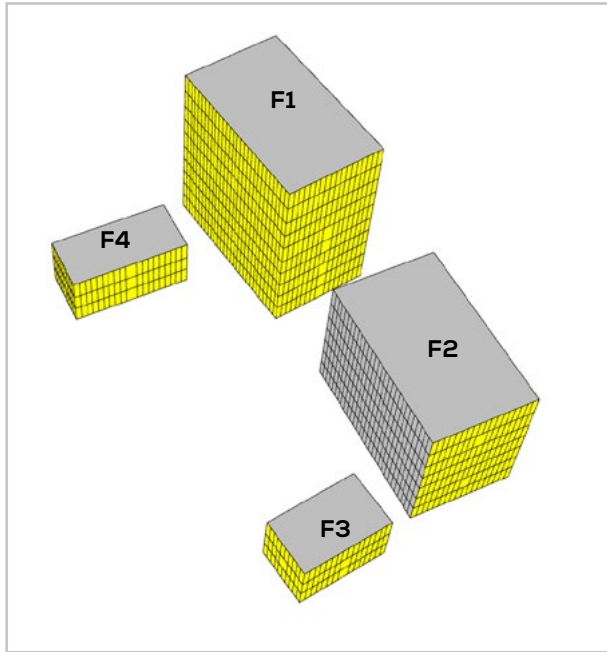


Fig. 81: Plot F - APSH - View 1

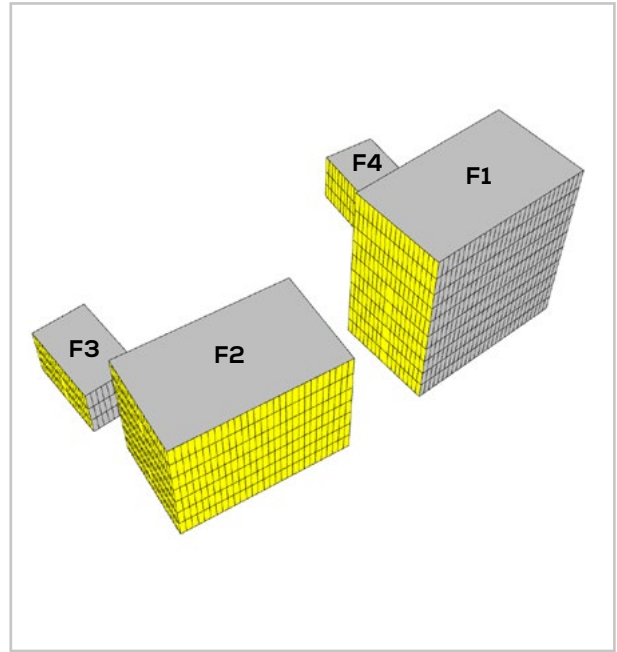
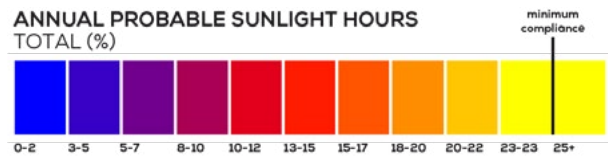


Fig. 82: Plot F - APSH - View 4

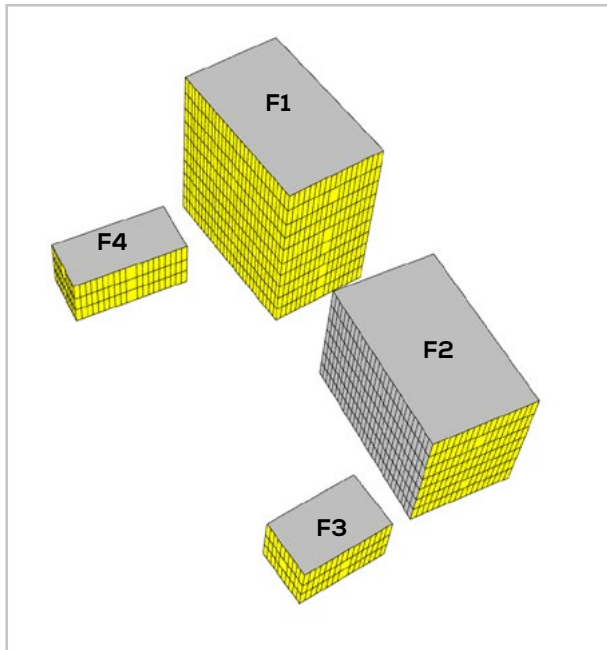


Fig. 83: Plot F - WPSH - View 1

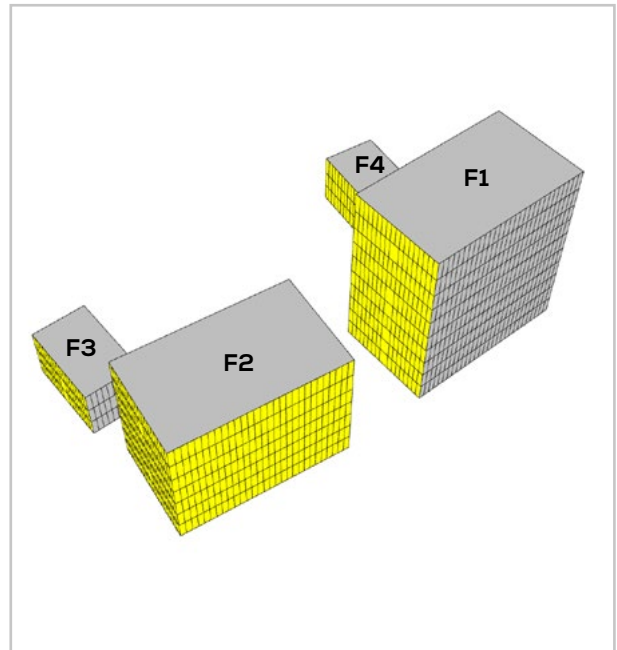
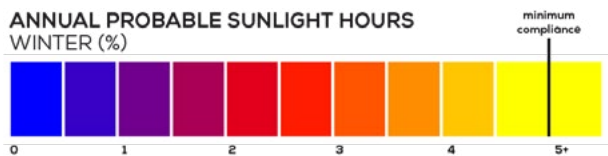


Fig. 84: Plot F - WPSH - View 4



DAYLIGHT POTENTIAL ASSESSMENT - PLOT G

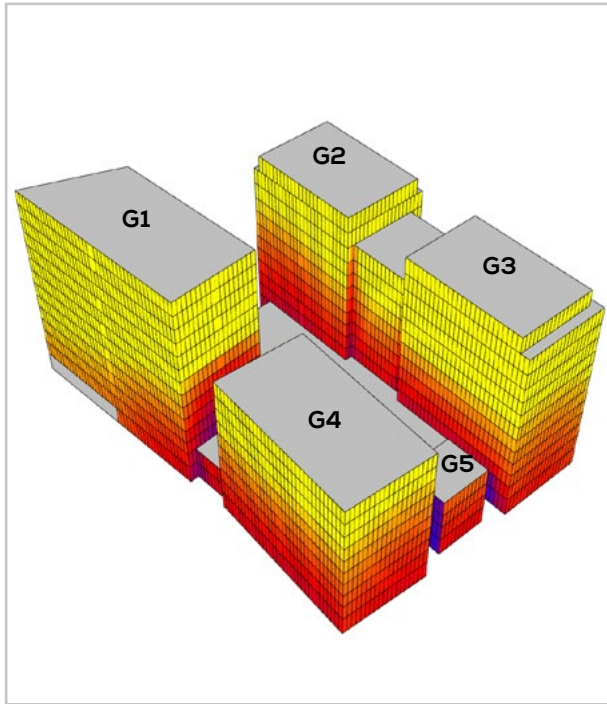


Fig. 85: Plot G - VSC - View 1

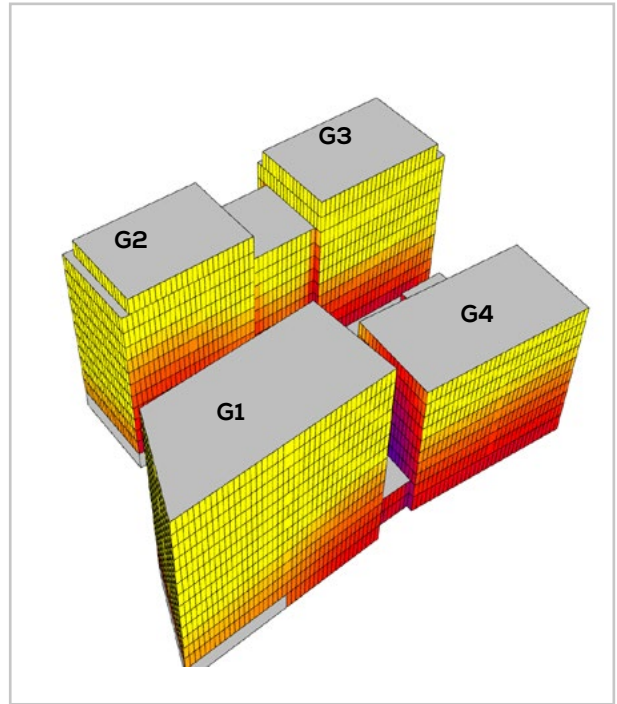


Fig. 86: Plot G - VSC - View 2

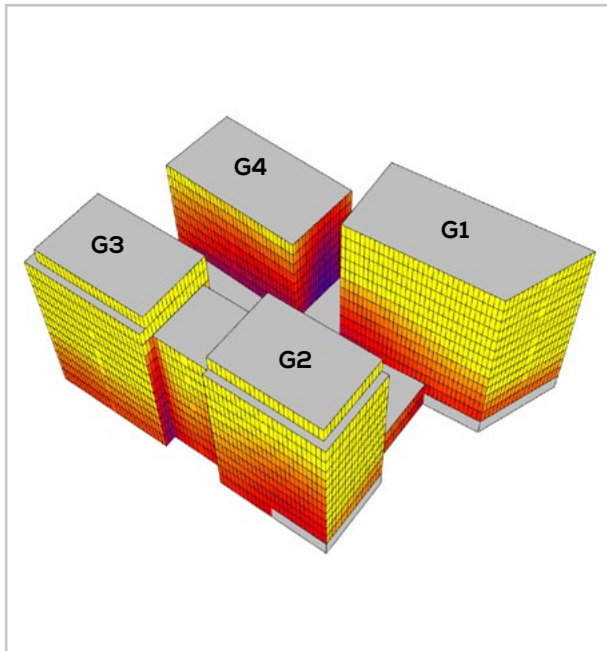


Fig. 87: Plot G - VSC - View 3

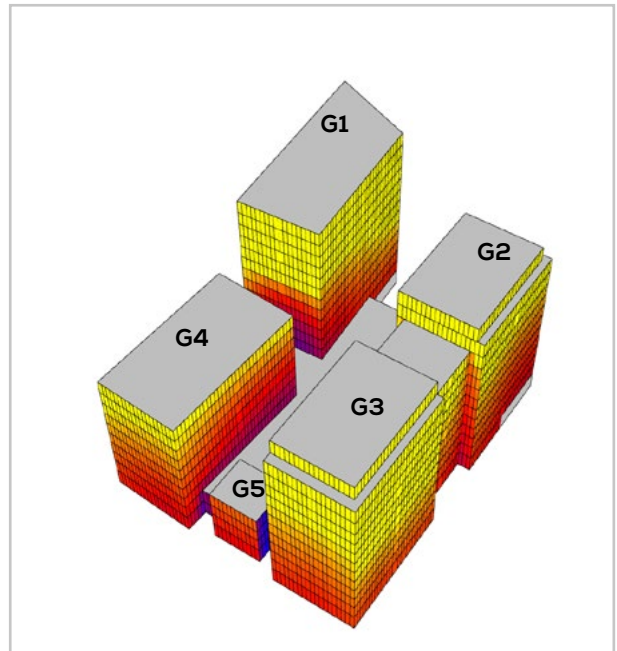
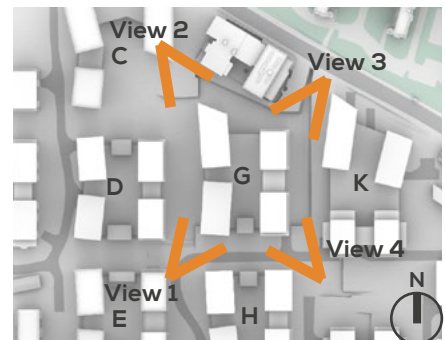
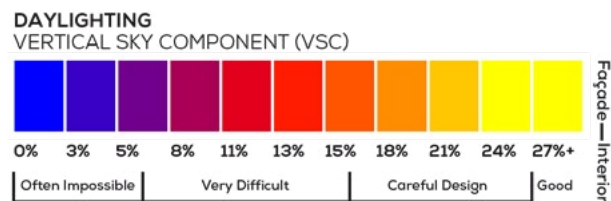


Fig. 88: Plot G - VSC - View 4



SUNLIGHT POTENTIAL ASSESSMENT - PLOT G

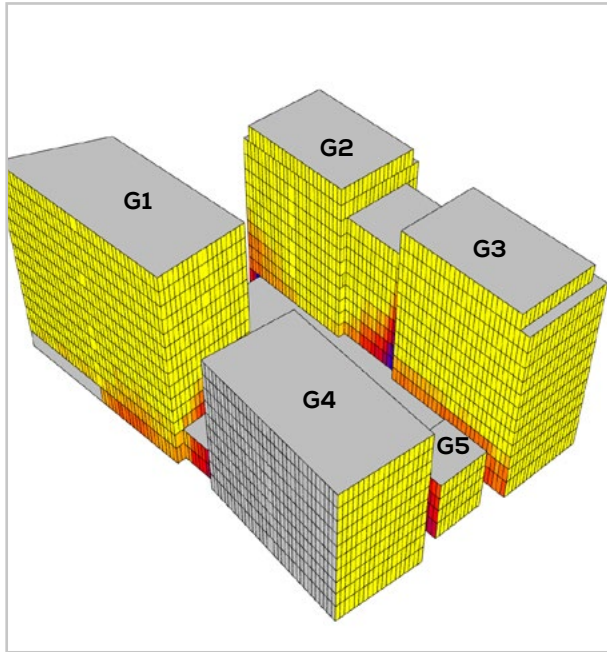


Fig. 89: Plot G - APSH - View 1

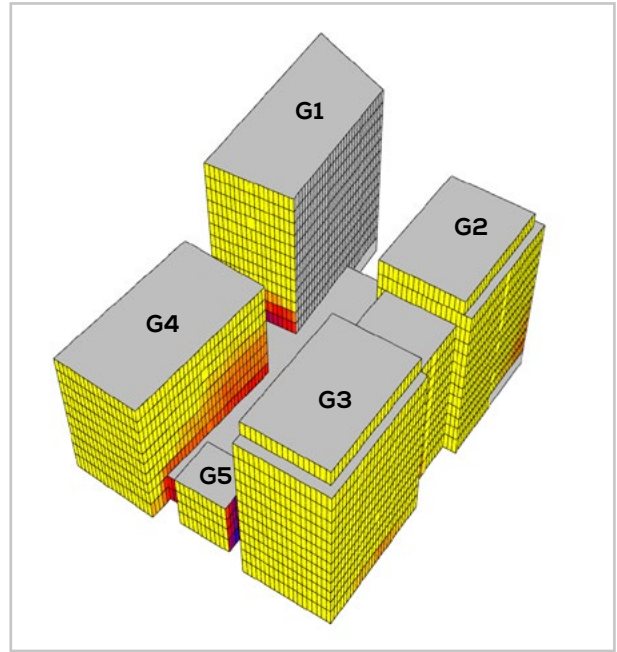


Fig. 90: Plot G - APSH - View 4

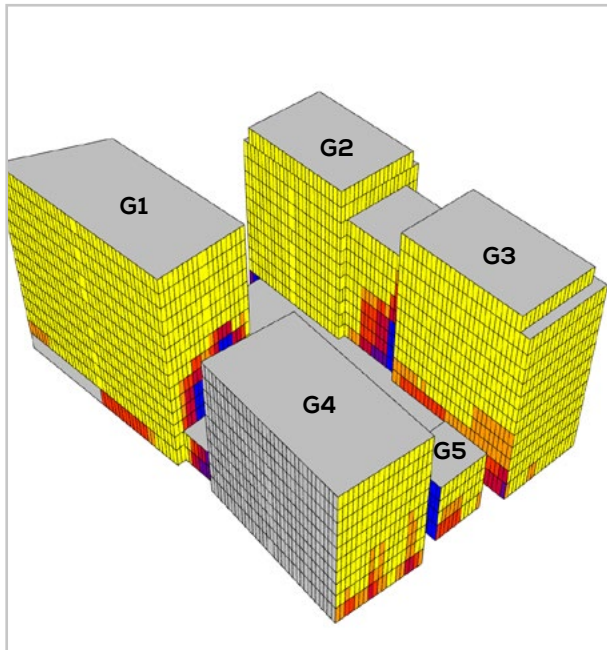
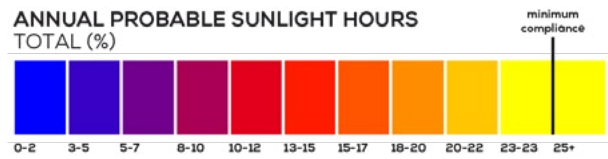


Fig. 91: Plot G - WPSH - View 1

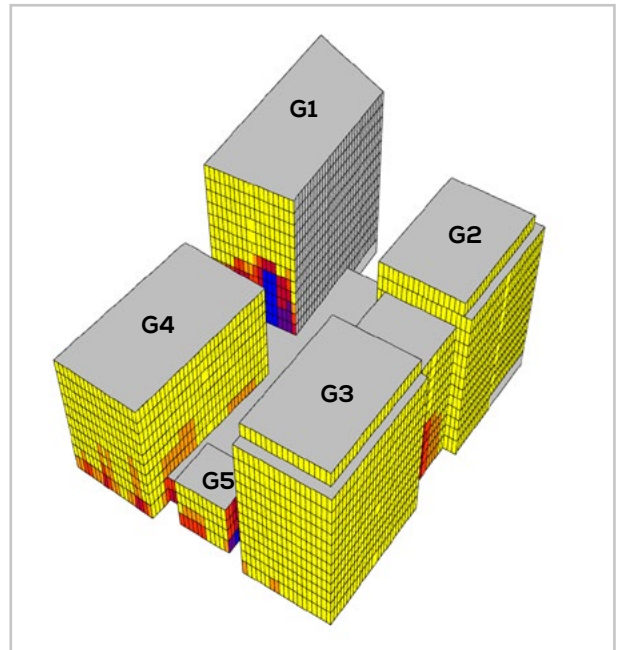
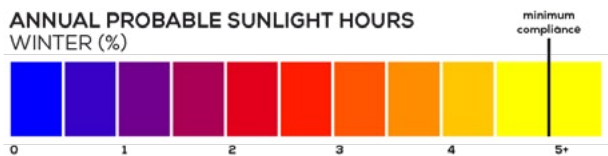


Fig. 92: Plot G - WPSH - View 4



DAYLIGHT POTENTIAL ASSESSMENT - PLOT H

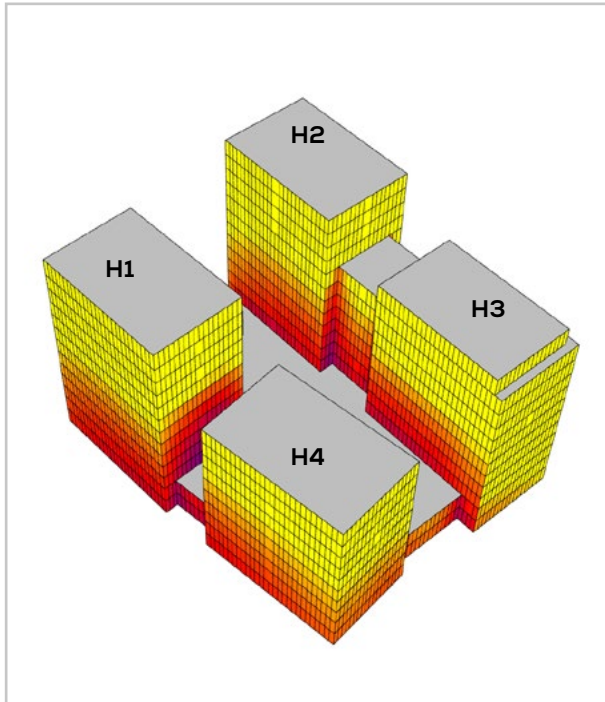


Fig. 93: Plot H - VSC - View 1

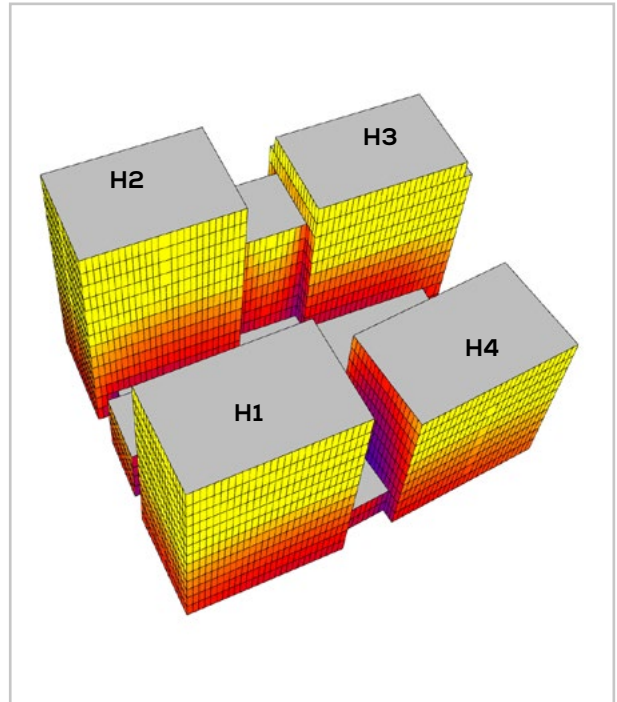


Fig. 94: Plot H - VSC - View 2

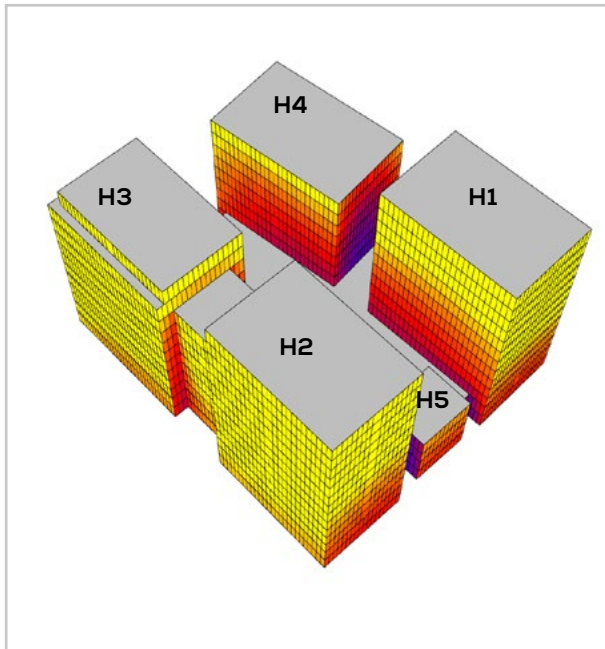


Fig. 95: Plot H - VSC - View 3

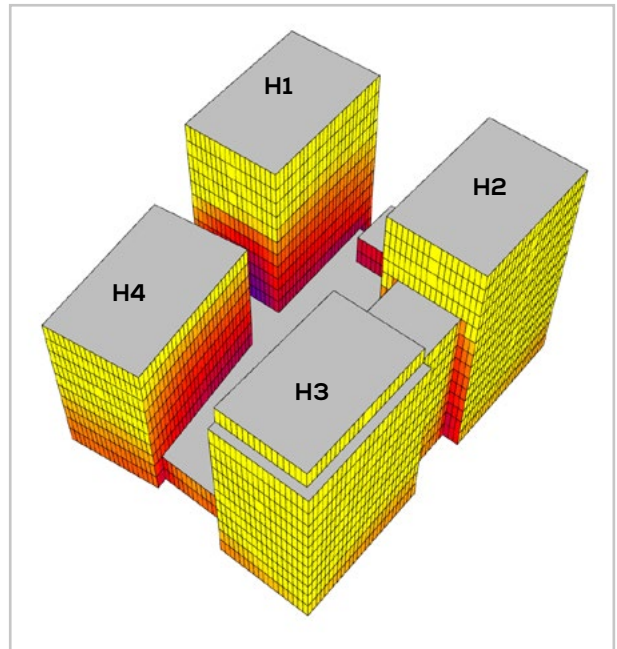
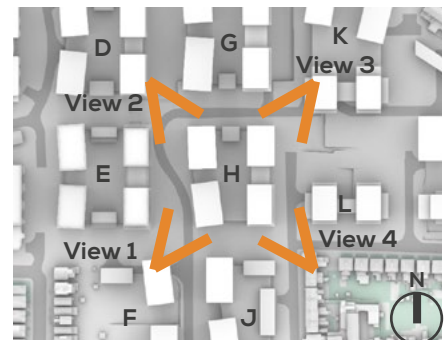
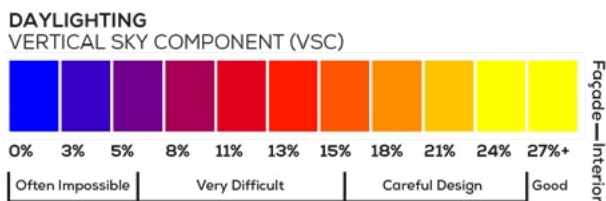


Fig. 96: Plot H - VSC - View 4



SUNLIGHT POTENTIAL ASSESSMENT - PLOT H

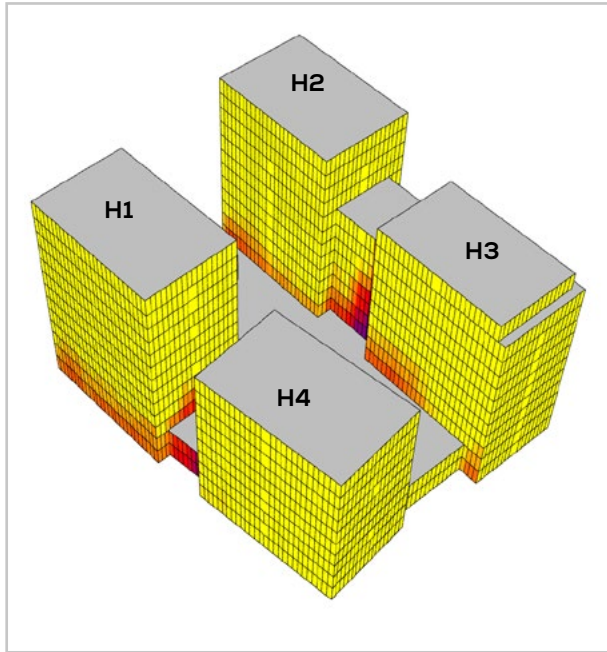


Fig. 97: Plot H - APSH - View 1

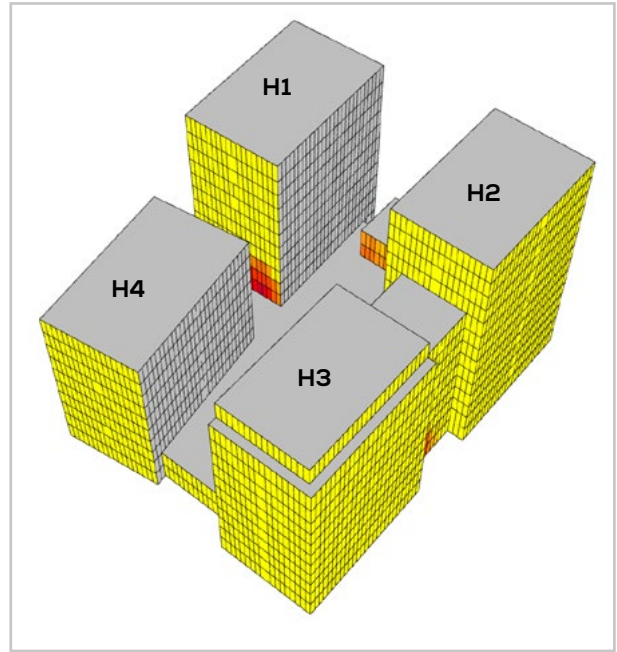


Fig. 98: Plot H - APSH - View 4

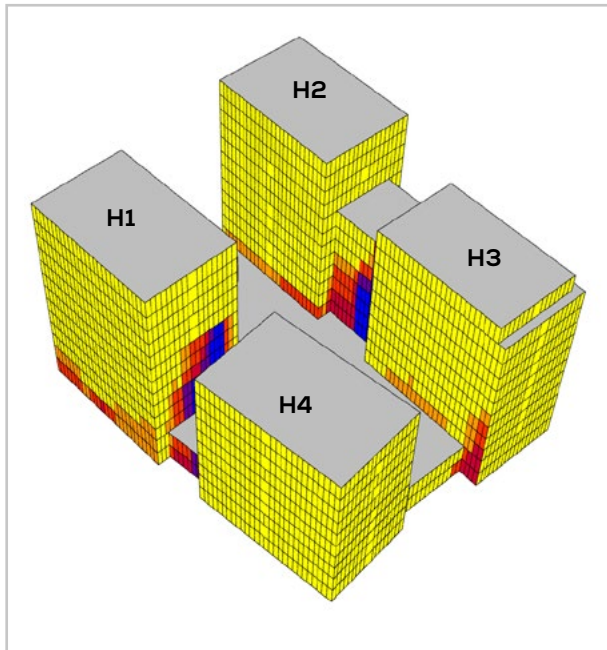
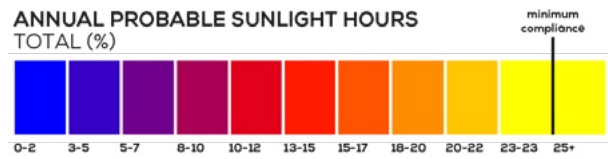


Fig. 99: Plot H - WPSH - View 1

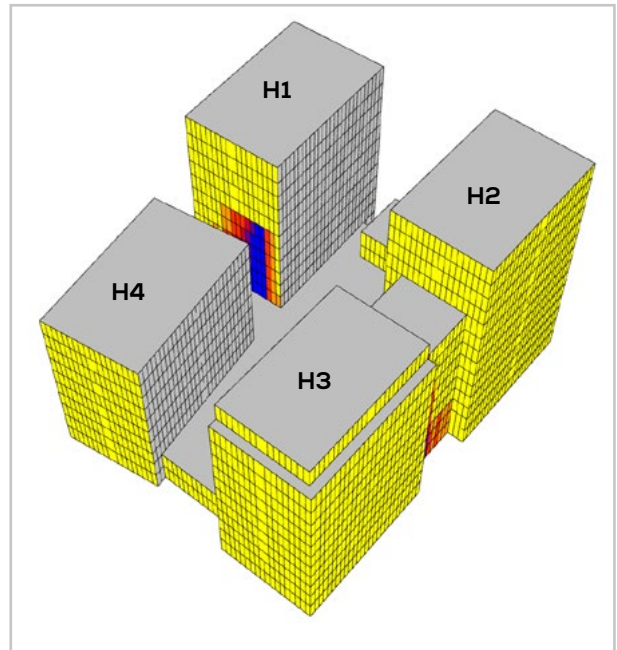
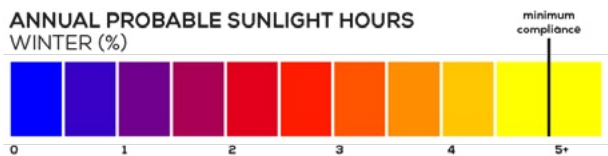


Fig. 100: Plot H - WPSH - View 4



DAYLIGHT POTENTIAL ASSESSMENT - PLOT J

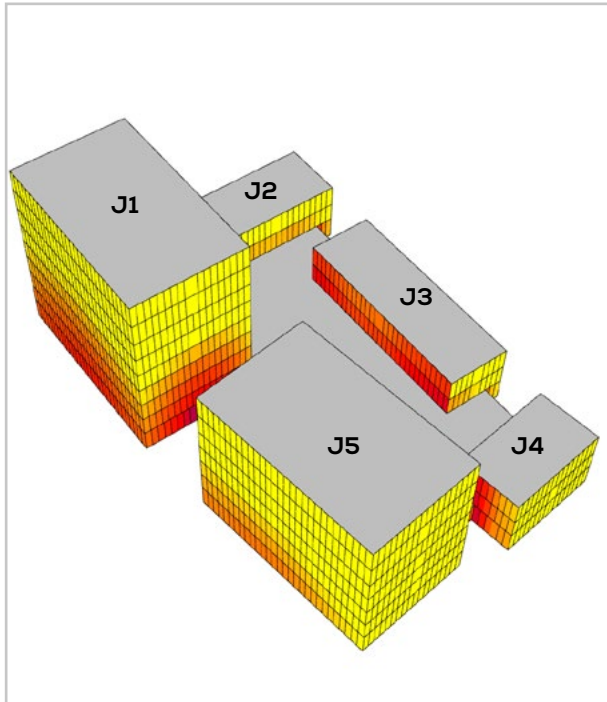


Fig. 101: Plot J - VSC - View 1

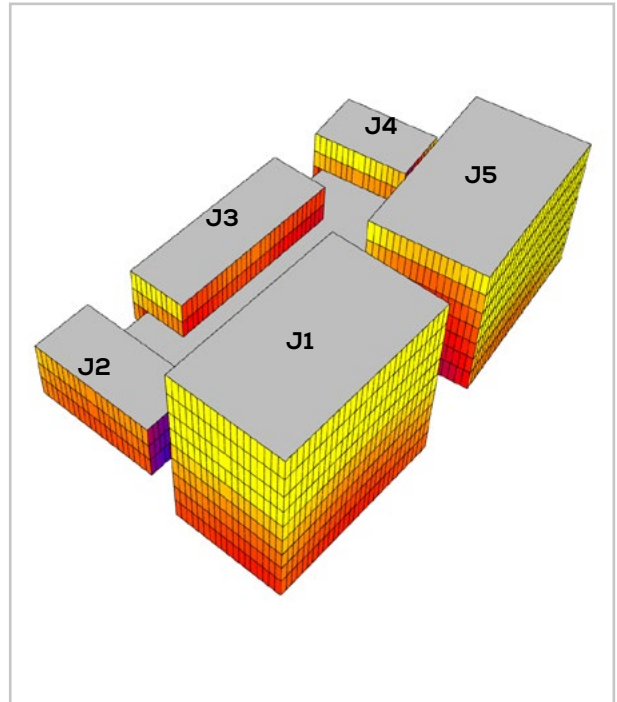


Fig. 102: Plot J - VSC - View 2

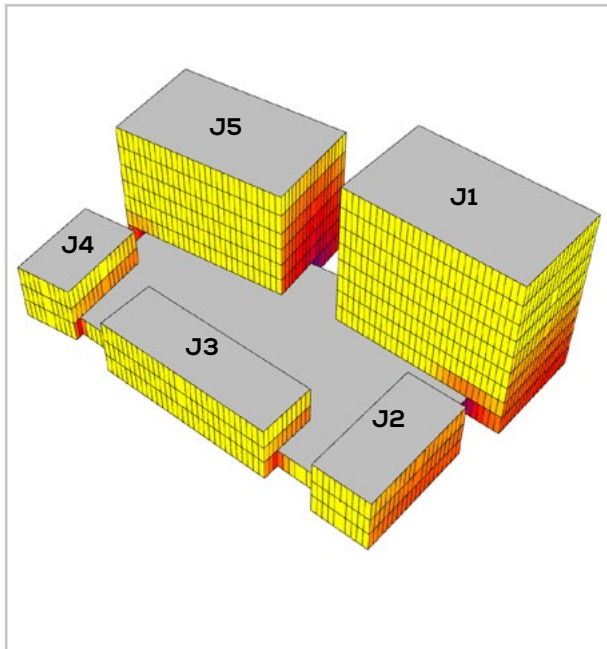


Fig. 103: Plot J - VSC - View 3

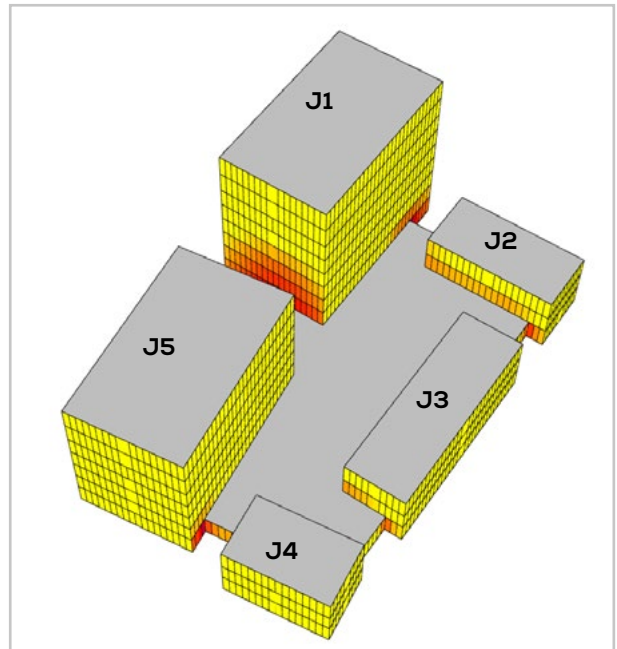
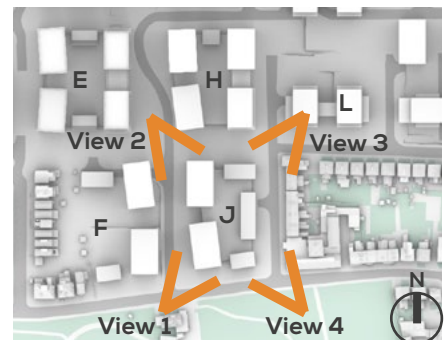
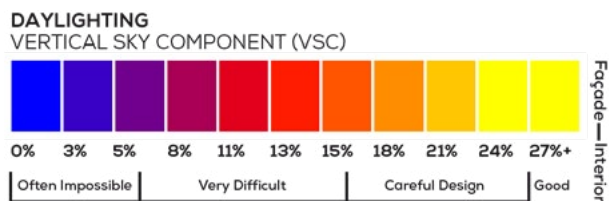


Fig. 104: Plot J - VSC - View 4



SUNLIGHT POTENTIAL ASSESSMENT - PLOT J

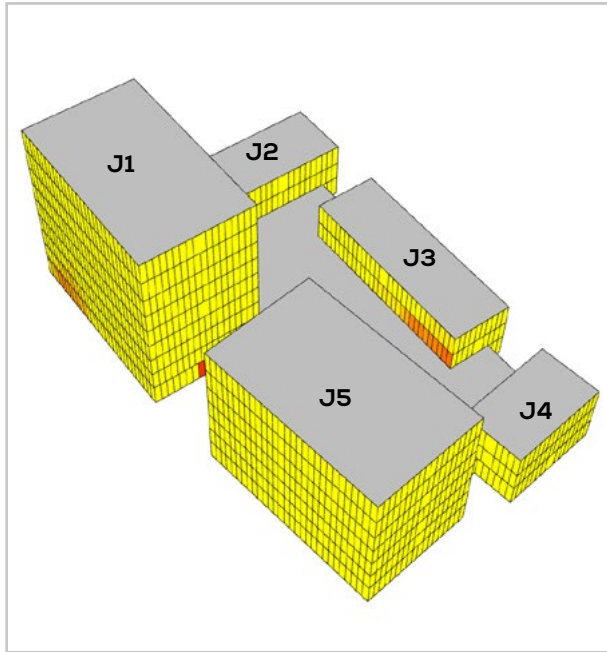


Fig. 105: Plot J - APSH - View 1

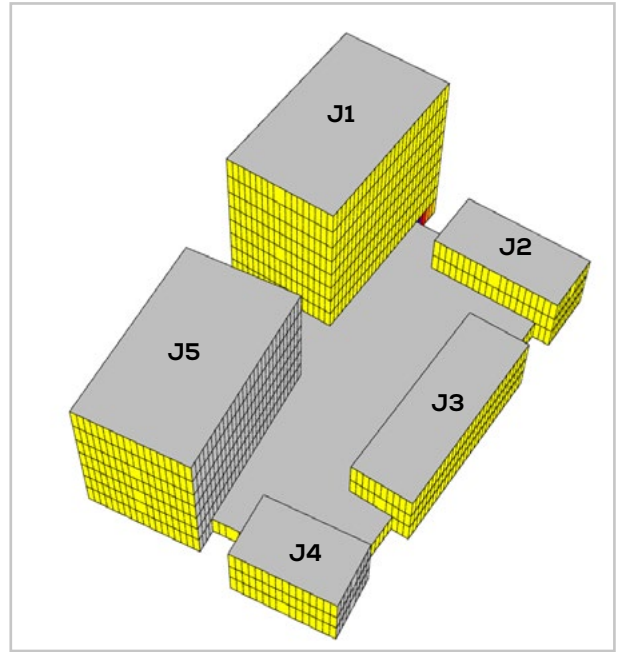
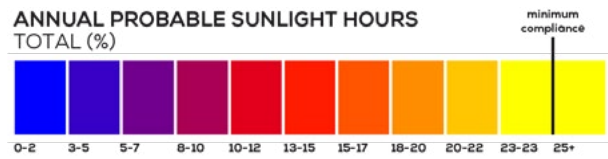


Fig. 106: Plot J - APSH - View 4

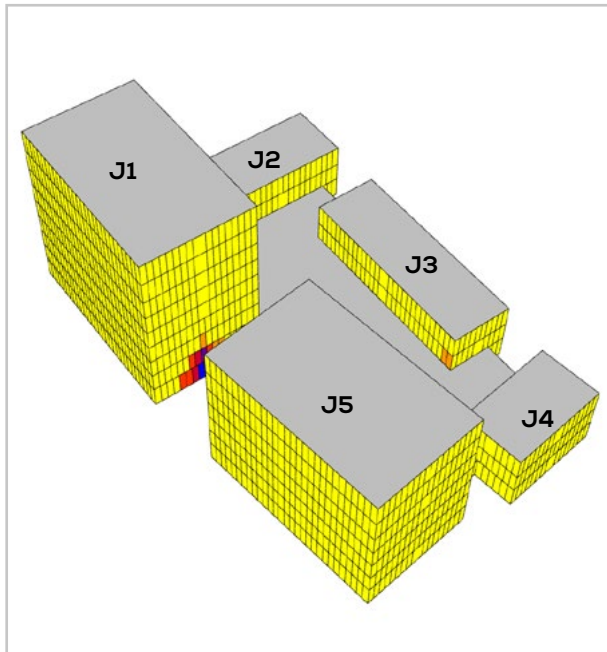


Fig. 107: Plot J - WPSH - View 1

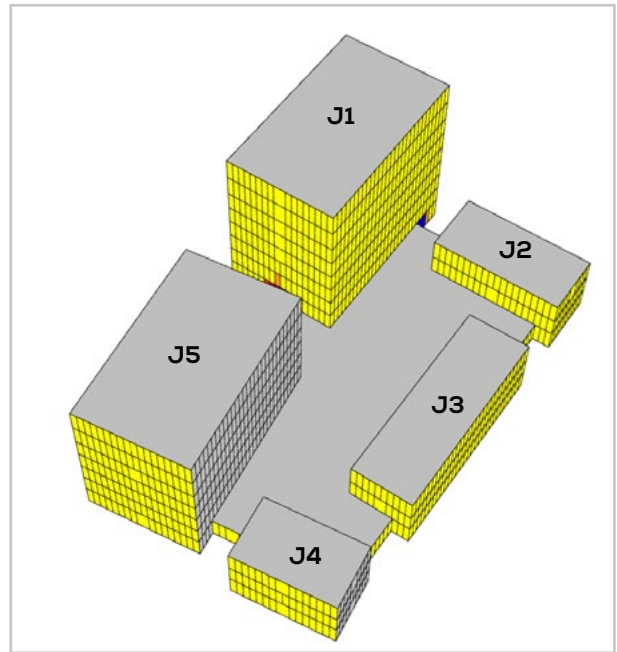
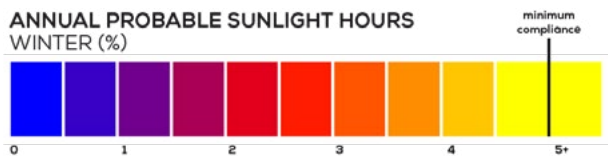


Fig. 108: Plot J - WPSH - View 4

DAYLIGHT POTENTIAL ASSESSMENT - PLOT K

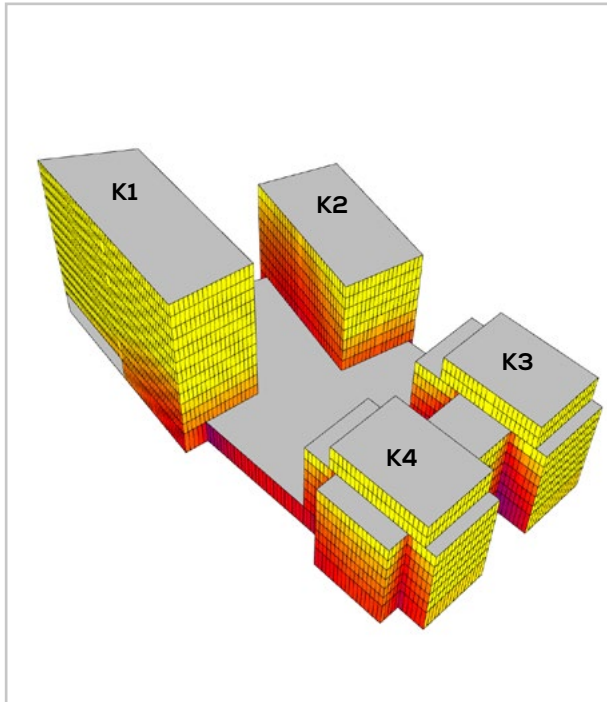


Fig. 109: Plot K - VSC - View 1

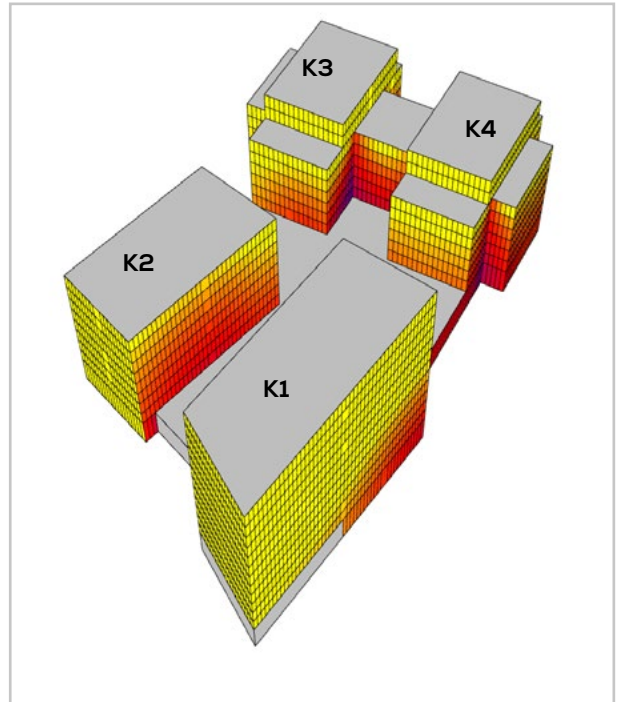


Fig. 110: Plot K - VSC - View 2

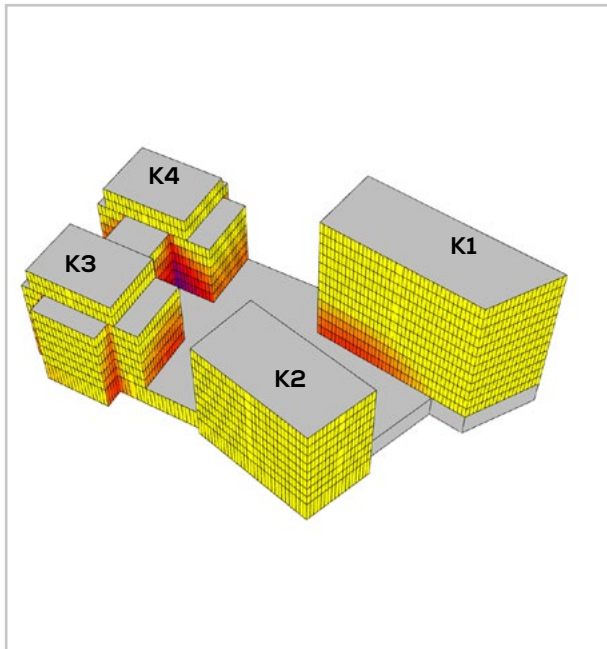


Fig. 111: Plot K - VSC - View 3

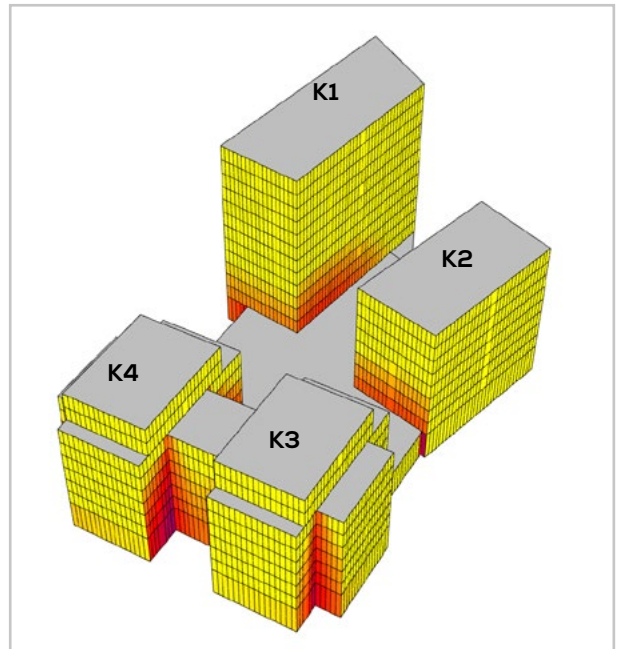
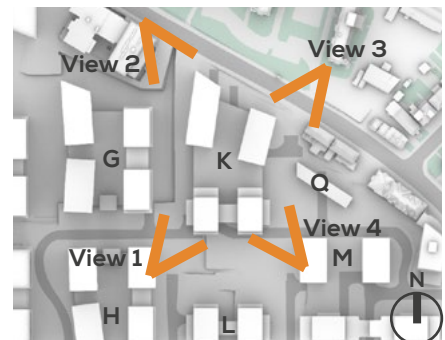
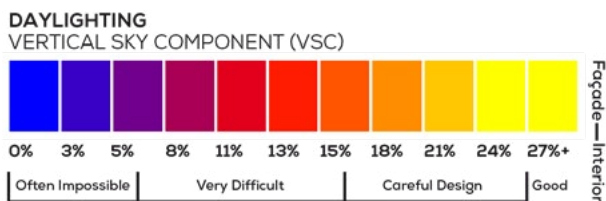


Fig. 112: Plot K - VSC - View 4



SUNLIGHT POTENTIAL ASSESSMENT - PLOT K

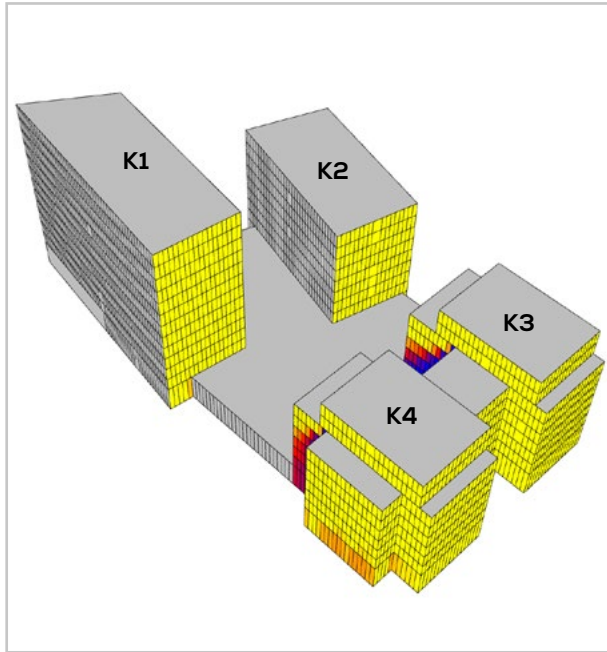


Fig. 113: Plot K - APSH - View 1

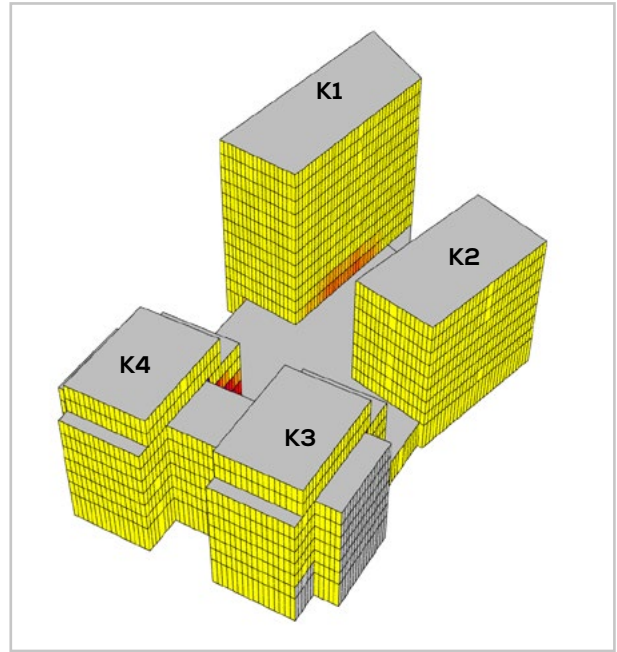
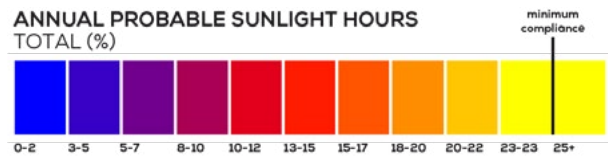


Fig. 114: Plot K - APSH - View 4

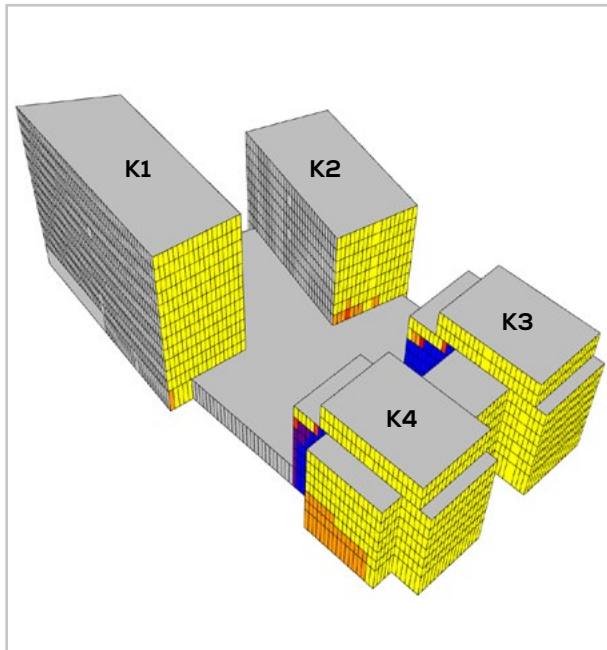


Fig. 115: Plot K - WPSH - View 1

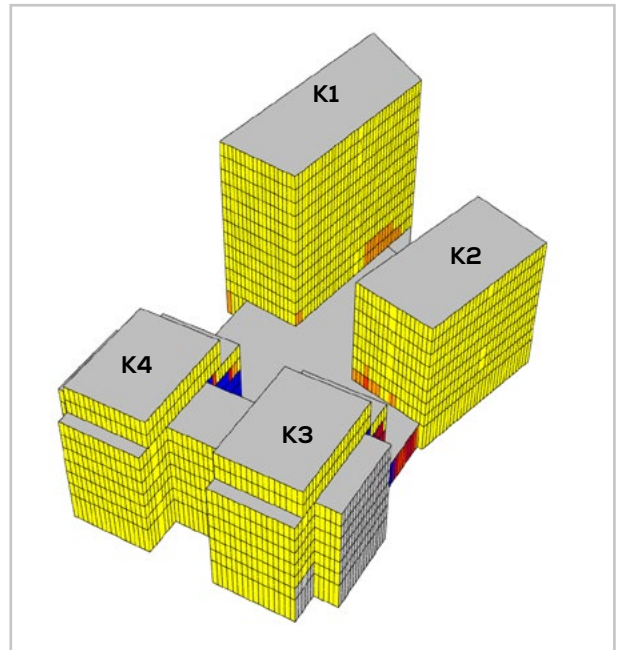
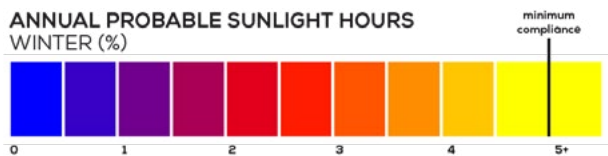


Fig. 116: Plot K - WPSH - View 4



DAYLIGHT POTENTIAL ASSESSMENT - PLOT L

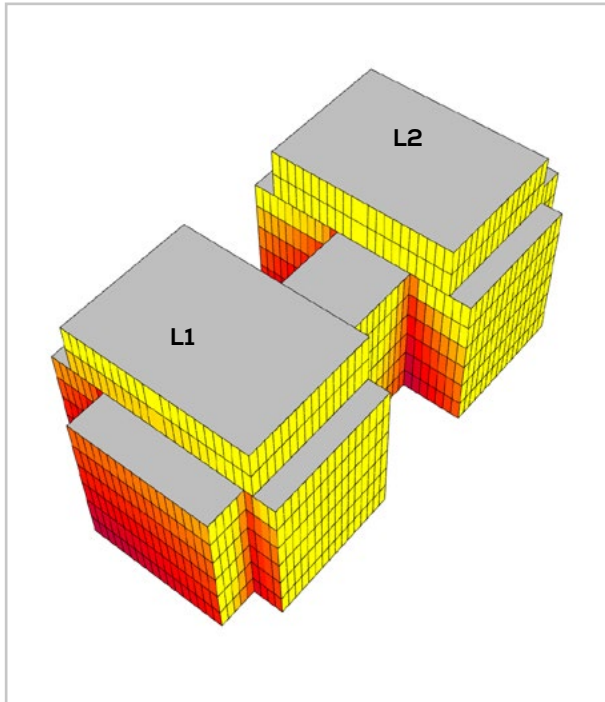


Fig. 117: Plot L - VSC - View 1

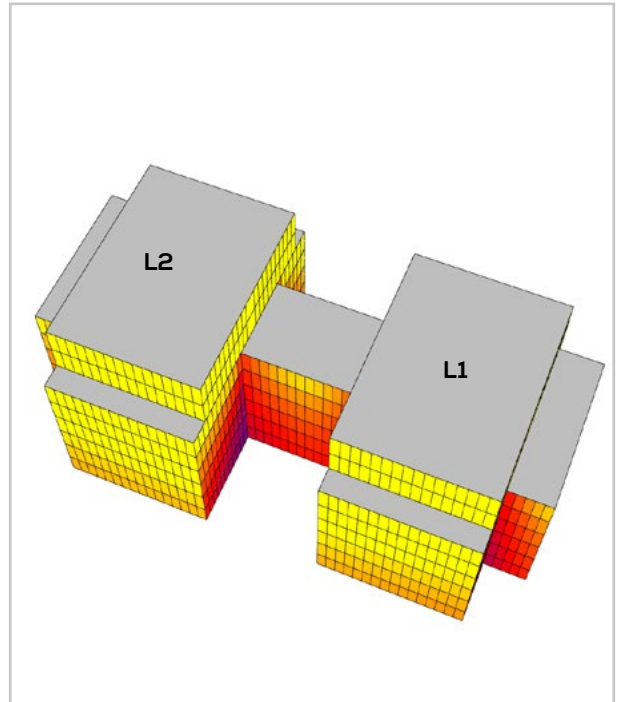


Fig. 118: Plot L - VSC - View 2

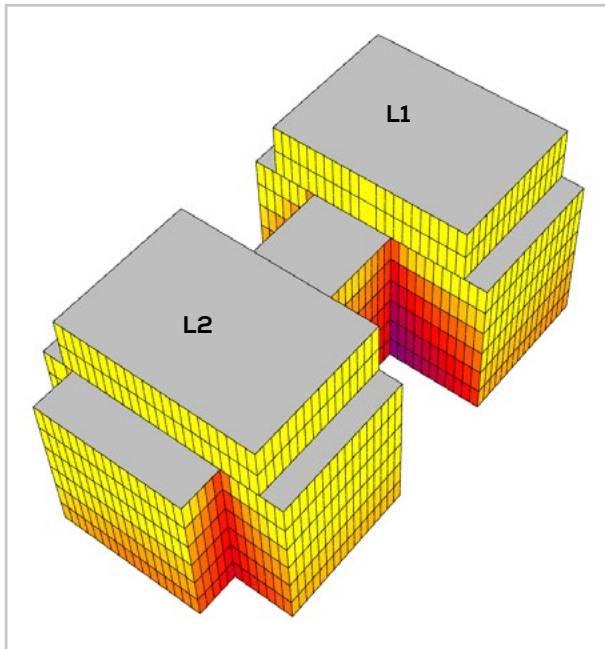


Fig. 119: Plot L - VSC - View 3

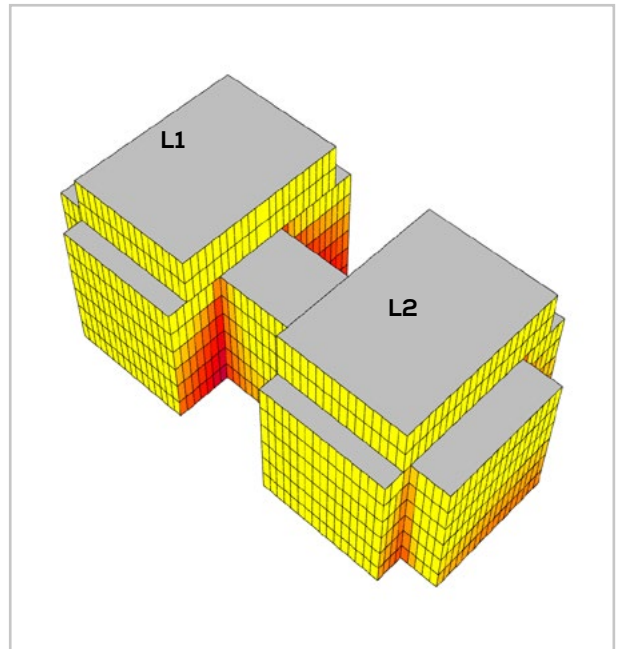
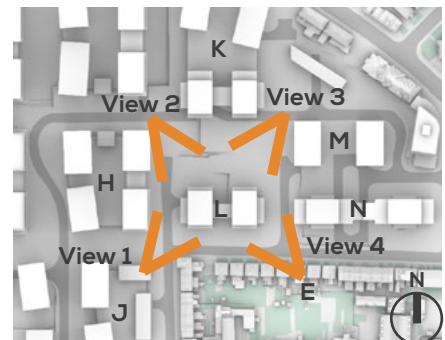
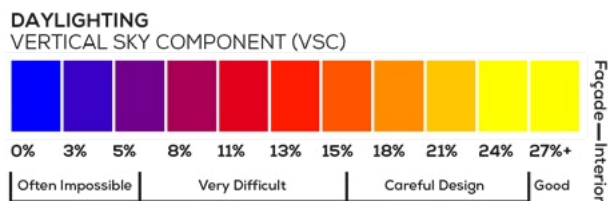


Fig. 120: Plot L - VSC - View 4



SUNLIGHT POTENTIAL ASSESSMENT - PLOT L

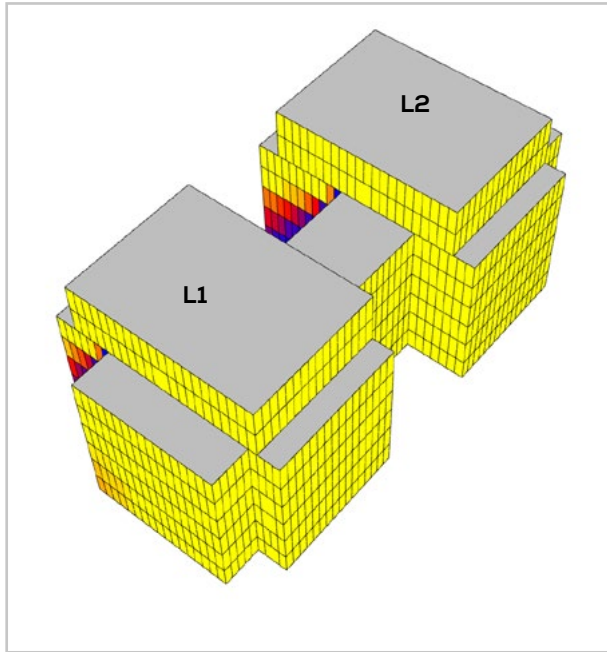


Fig. 121: Plot L - APSH - View 1

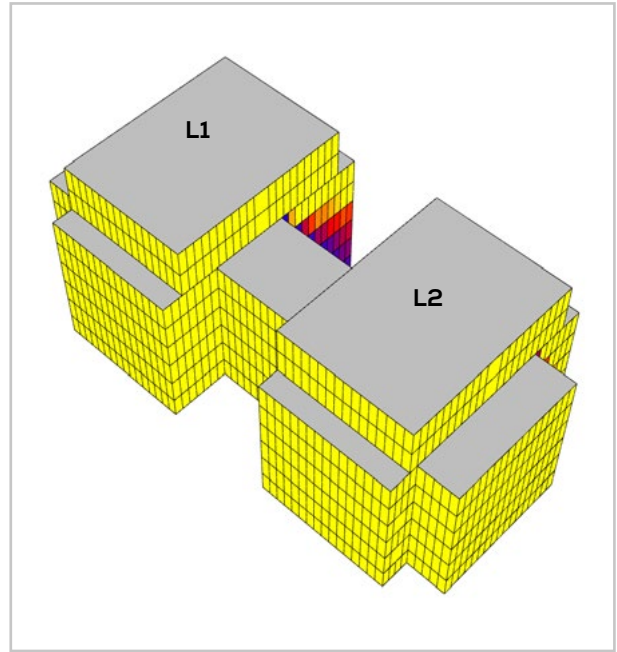


Fig. 122: Plot L - APSH - View 4

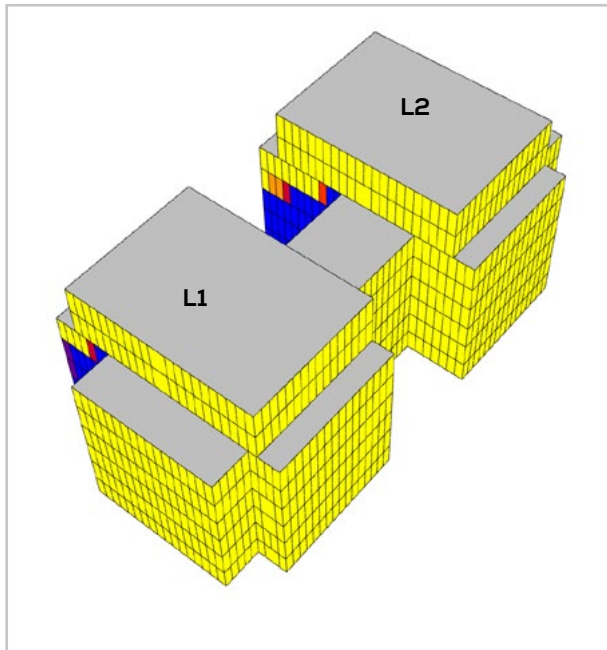
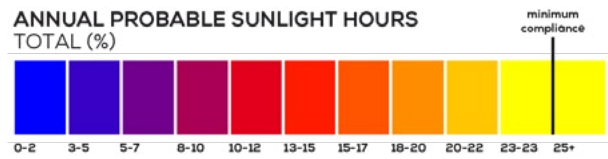


Fig. 123: Plot L - WPSH - View 1

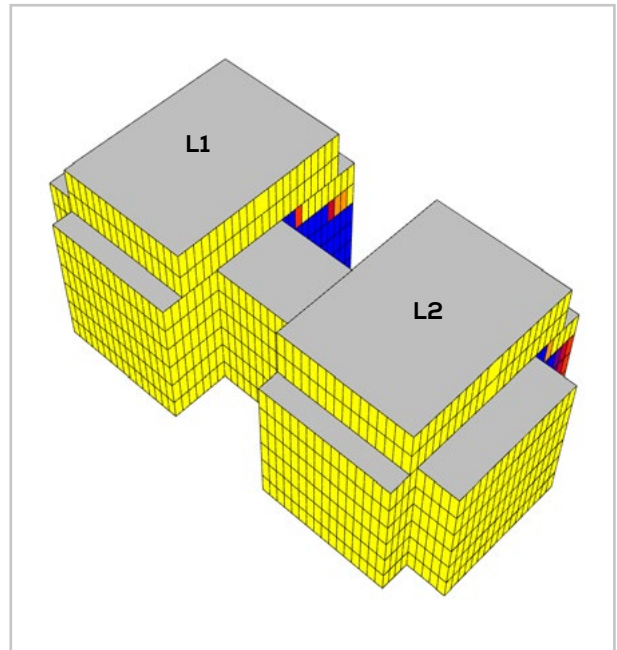
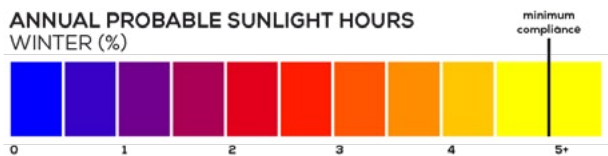


Fig. 124: Plot L - WPSH - View 4



DAYLIGHT POTENTIAL ASSESSMENT - PLOT M

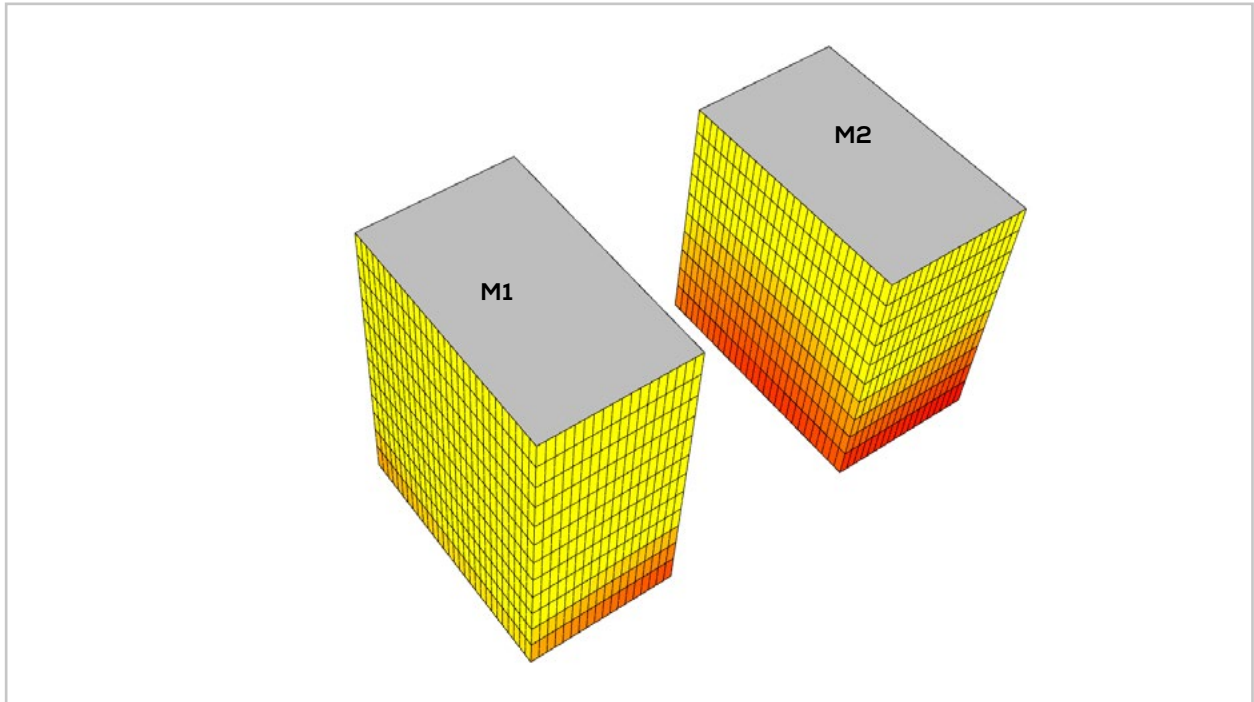


Fig. 125: Plot M - VSC - View 1

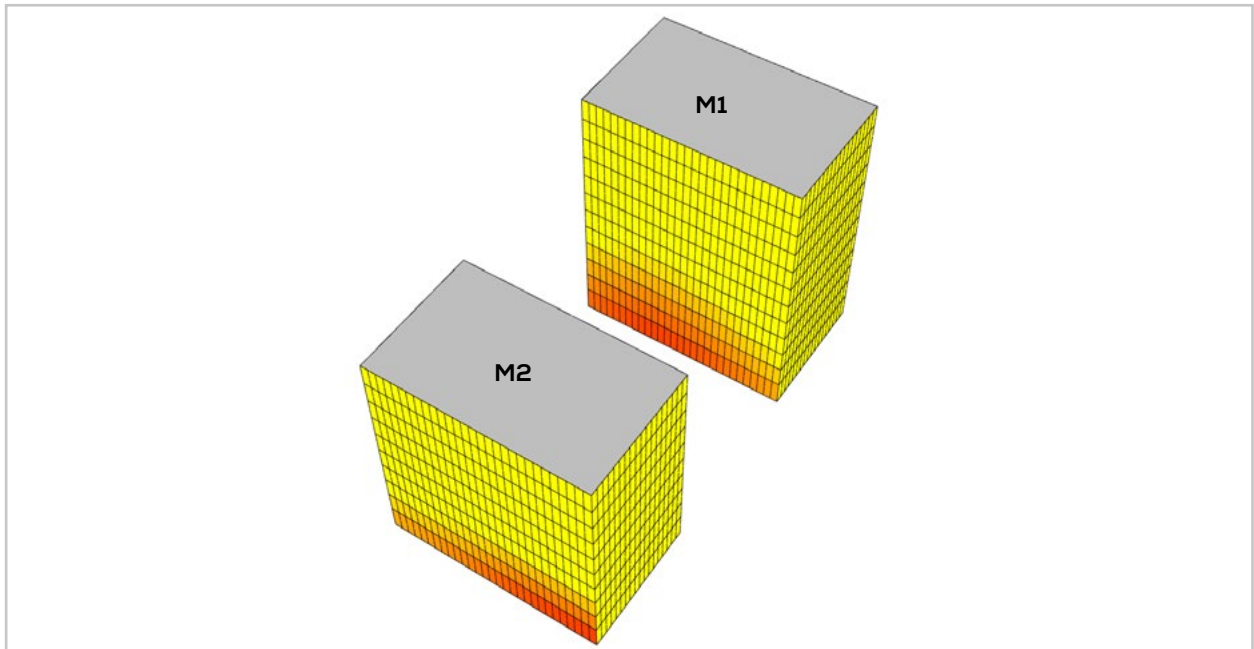
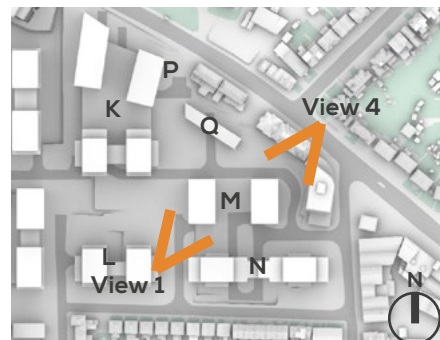
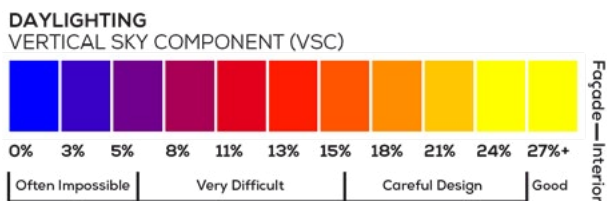


Fig. 126: Plot M - VSC - View 2



SUNLIGHT POTENTIAL ASSESSMENT - PLOT M

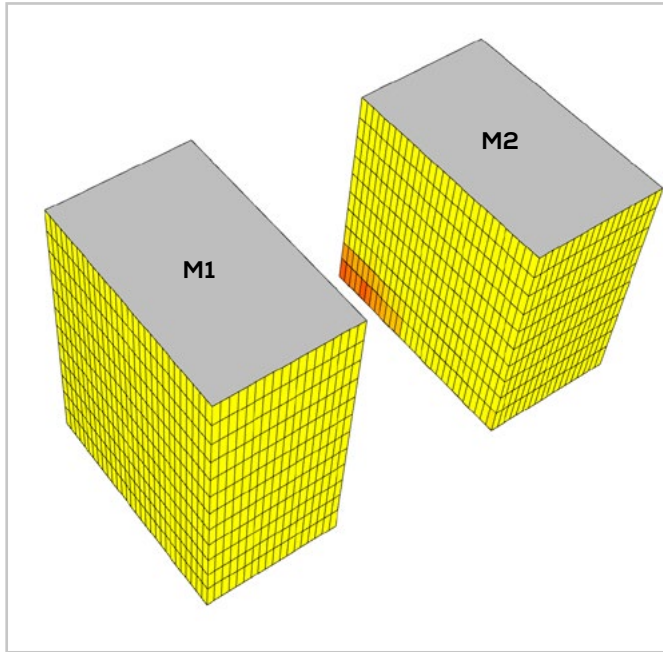


Fig. 127: Plot M - APSH - View 1

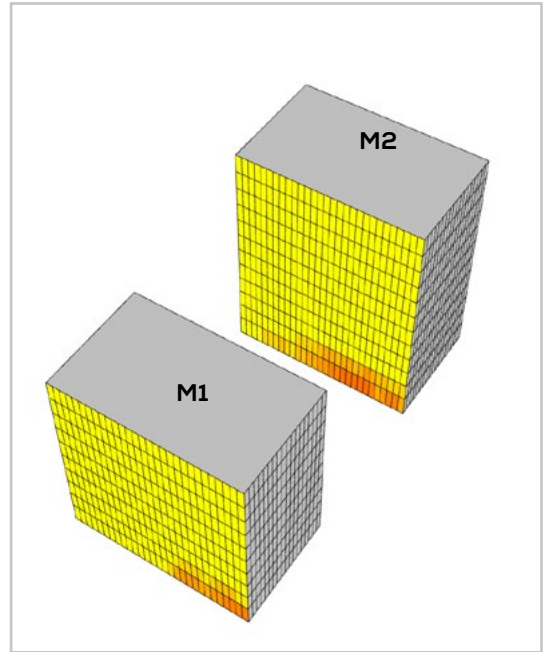


Fig. 129: Plot M - APSH - View 2

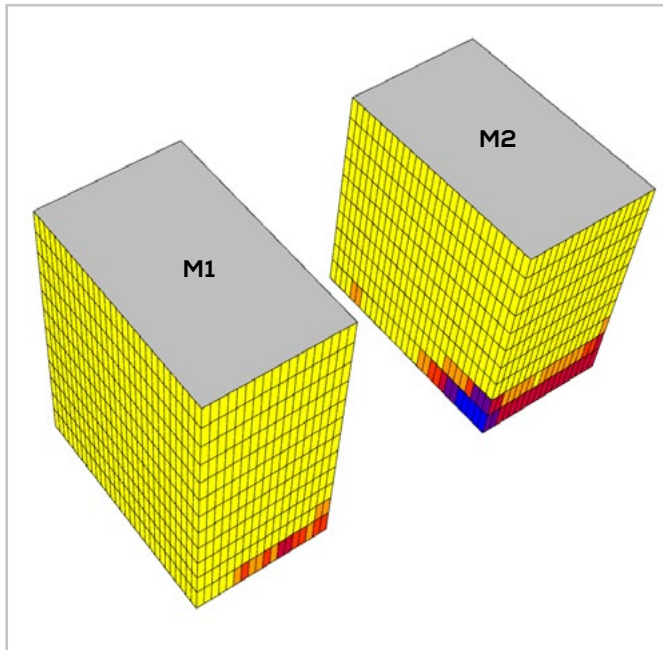
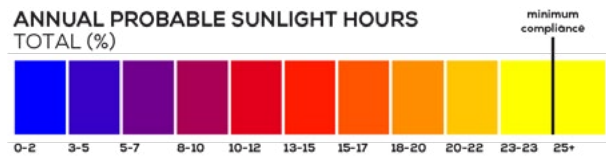


Fig. 128: Plot M - WPSH - View 1

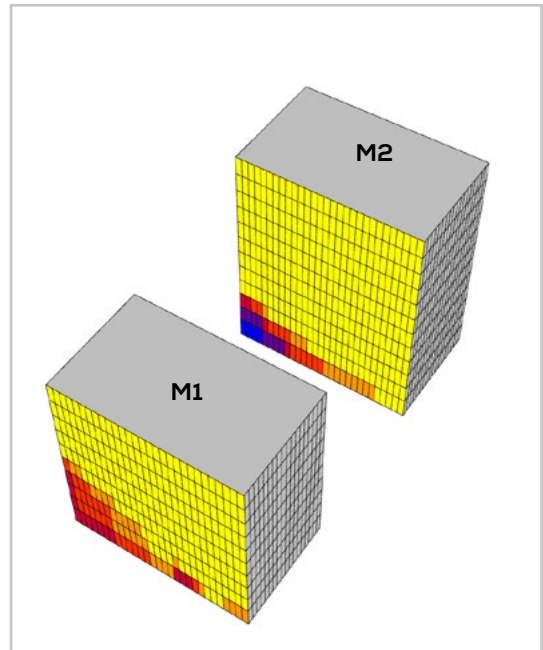
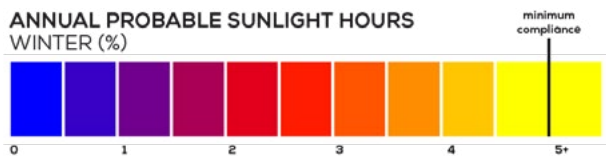


Fig. 130: Plot M - WPSH - View 2



DAYLIGHT POTENTIAL ASSESSMENT - PLOT N

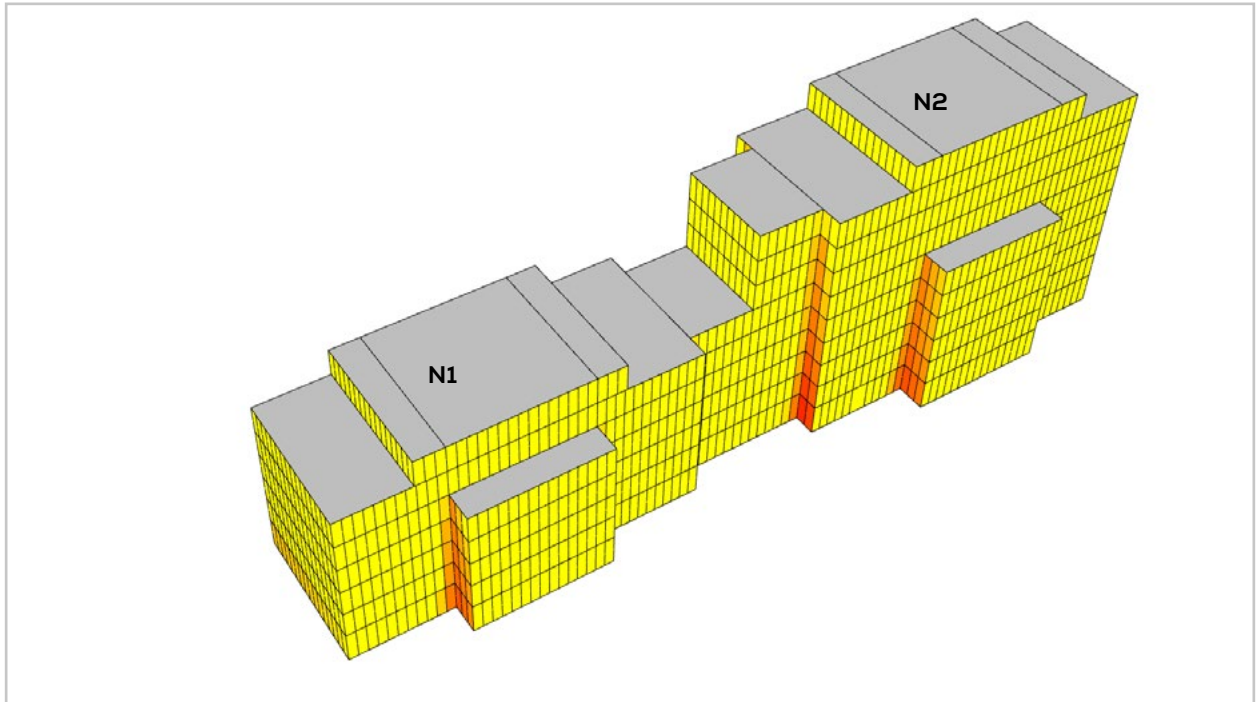


Fig. 131: Plot N - VSC - View 1

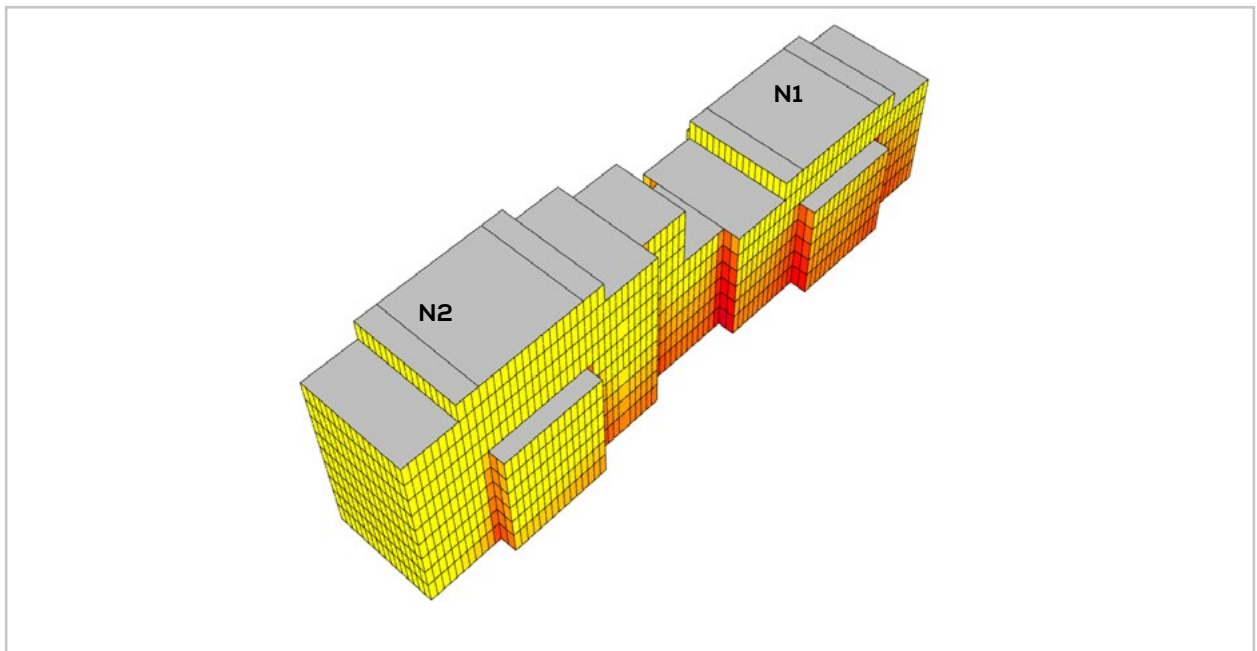
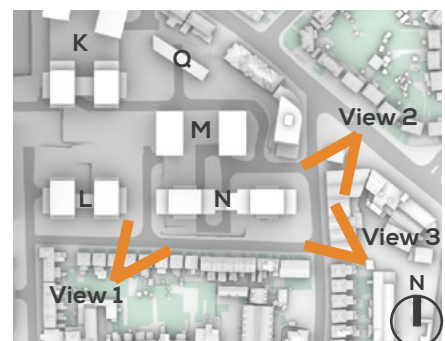
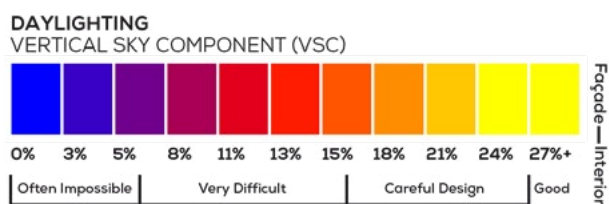


Fig. 132: Plot N - VSC - View 2



SUNLIGHT POTENTIAL ASSESSMENT - PLOT N

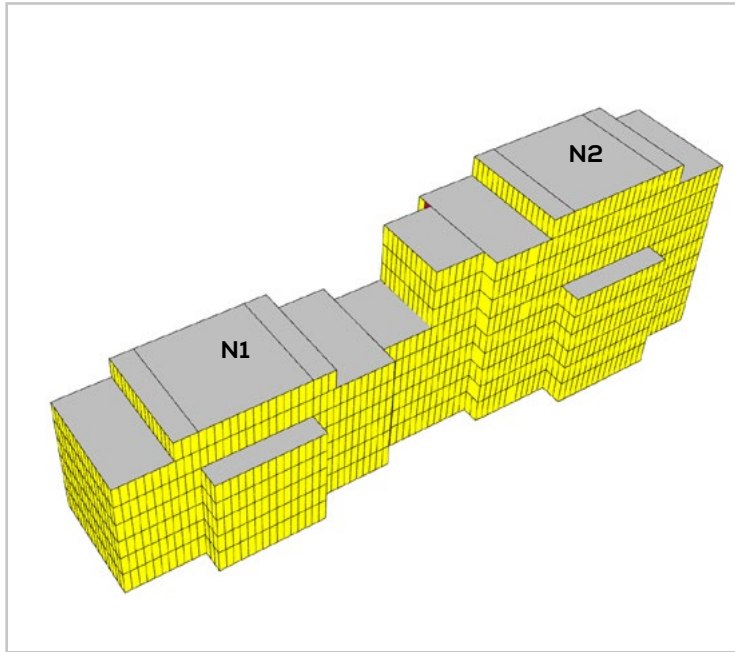


Fig. 133: Plot N - APSH - View 1

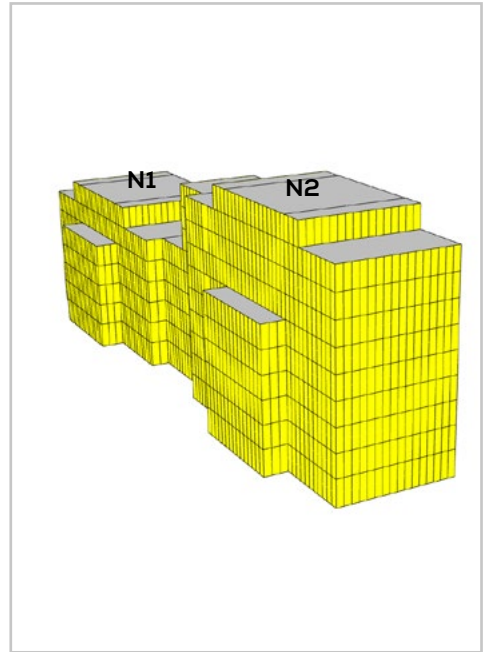


Fig. 135: Plot N - APSH - View 3

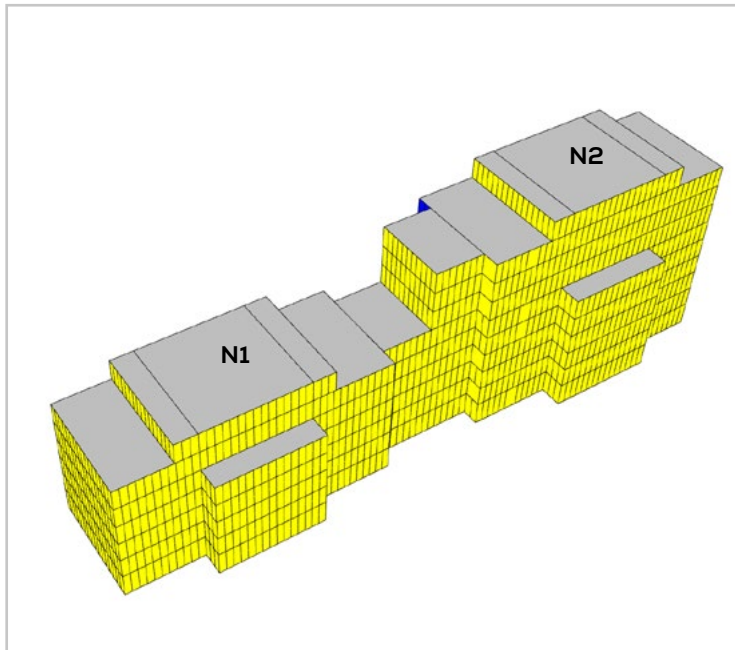
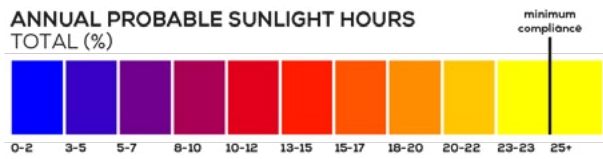


Fig. 134: Plot N - WPSH - View 1

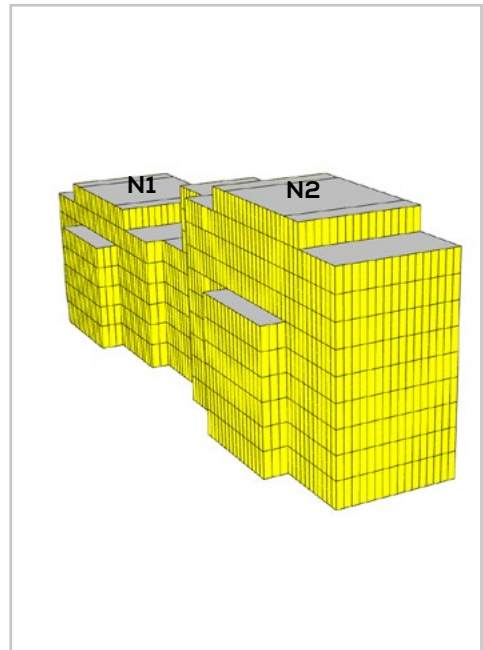
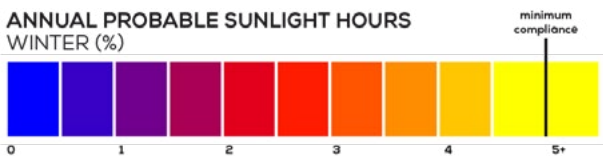


Fig. 136: Plot N - WPSH - View 3



DAYLIGHT POTENTIAL ASSESSMENT - PLOT P

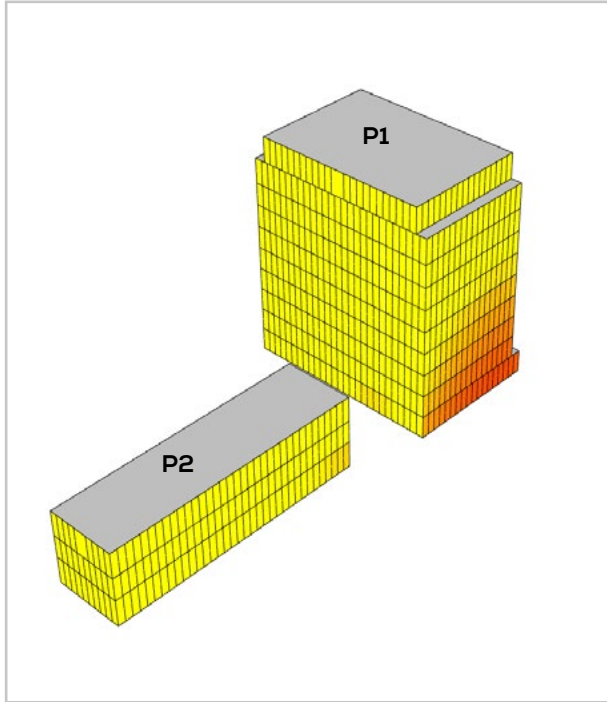


Fig. 137: Plot P - VSC - View 1

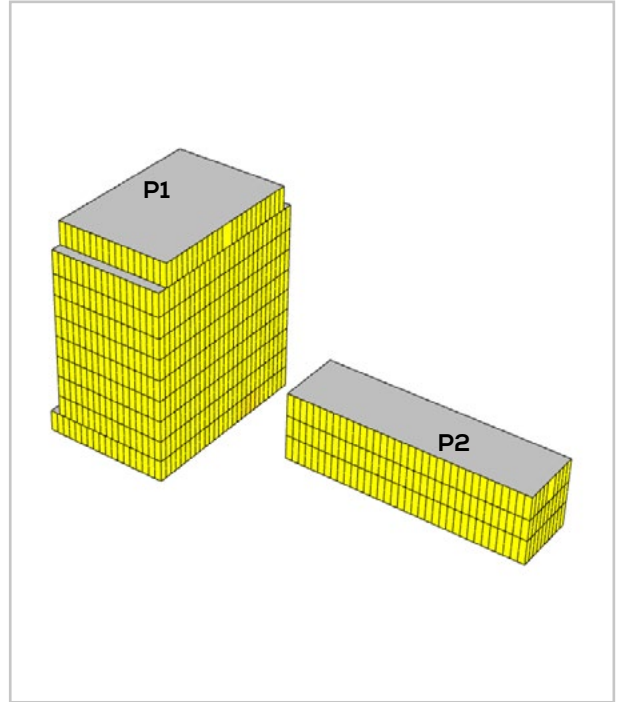


Fig. 138: Plot P - VSC - View 2

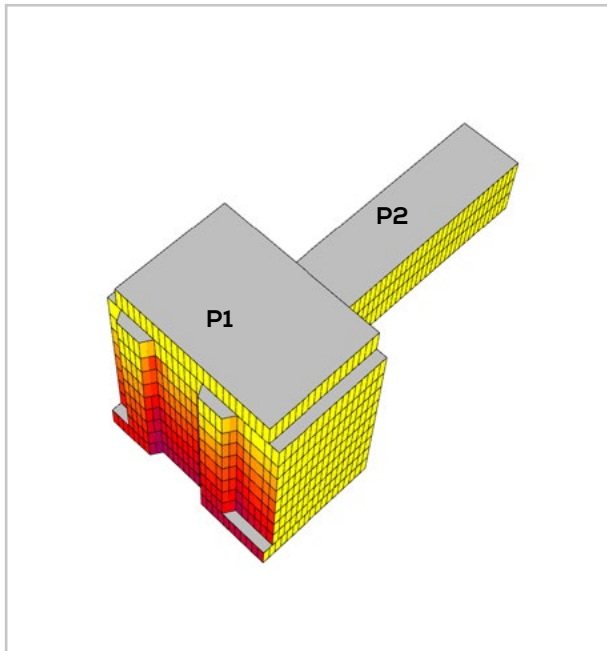


Fig. 139: Plot P - VSC - View 3

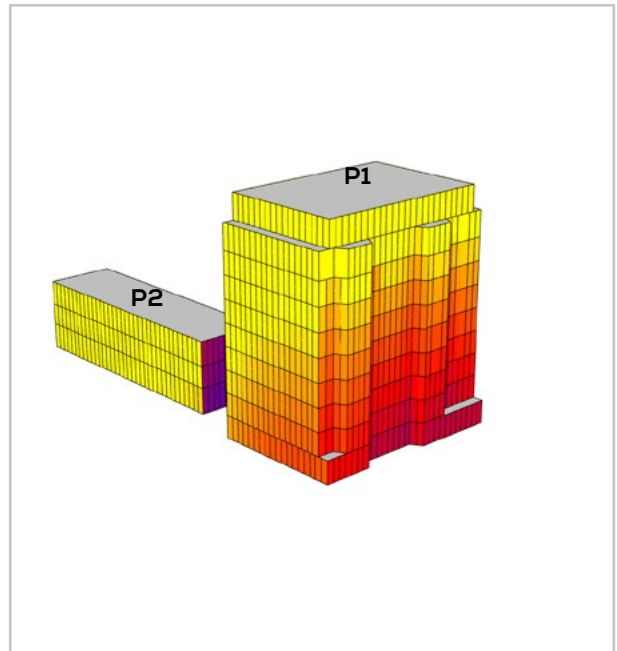
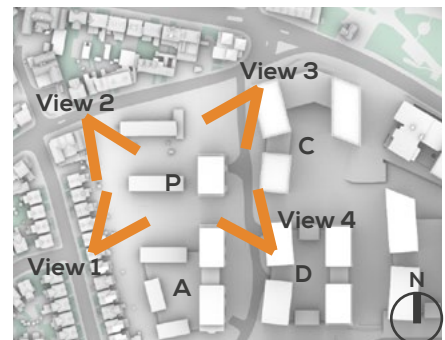
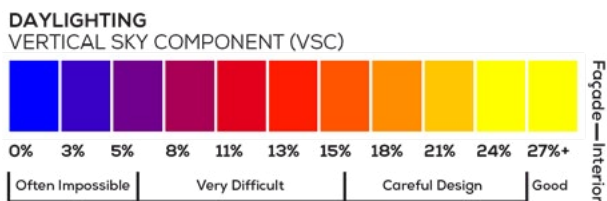


Fig. 140: Plot P - VSC - View 4



SUNLIGHT POTENTIAL ASSESSMENT - PLOT P

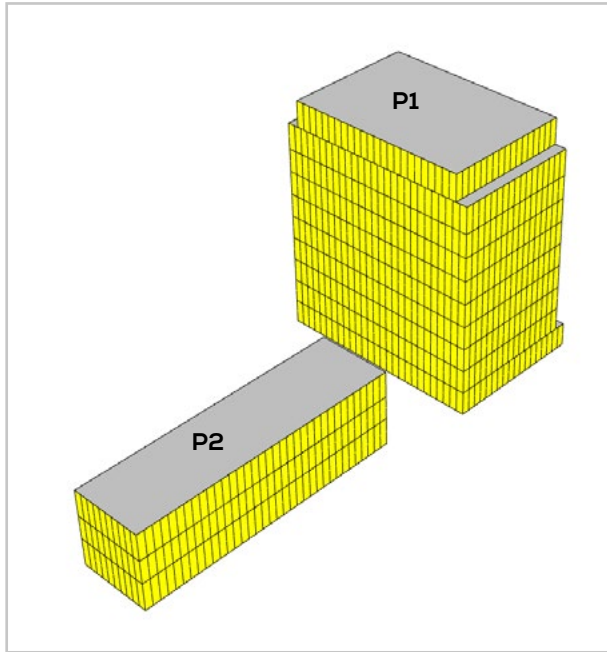


Fig. 141: Plot P - APSH - View 1

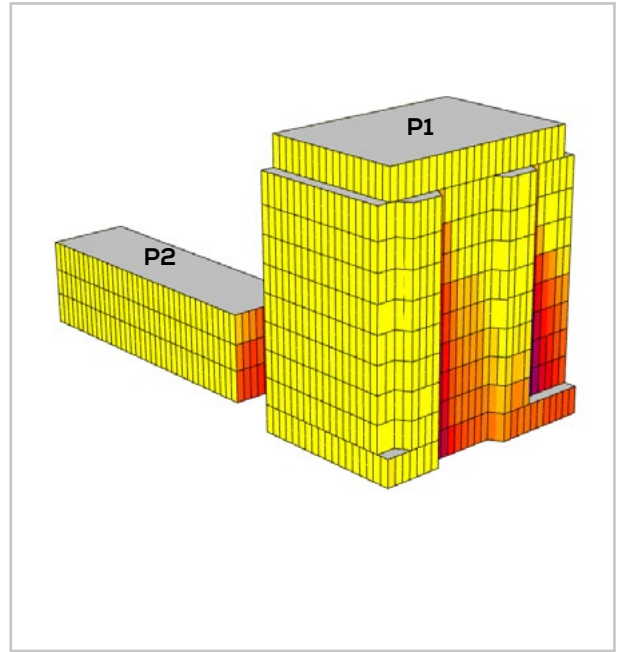


Fig. 142: Plot P - APSH - View 4

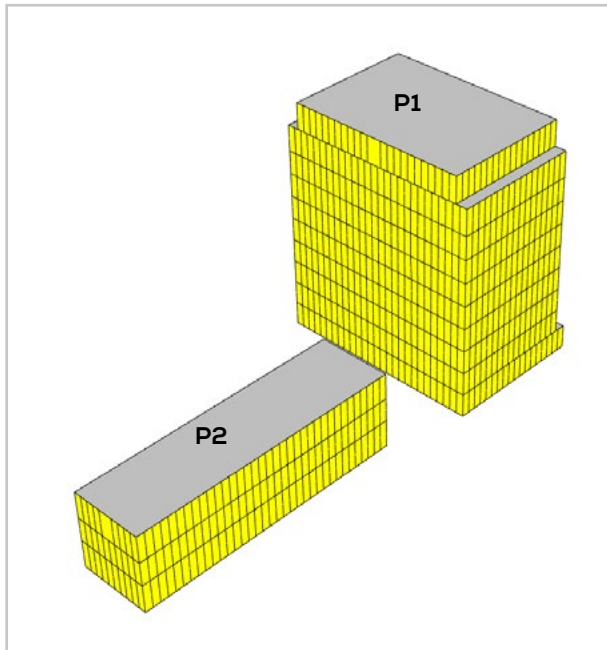
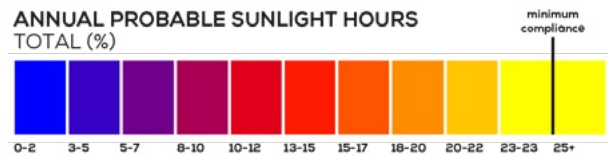


Fig. 143: Plot P - WPSH - View 1

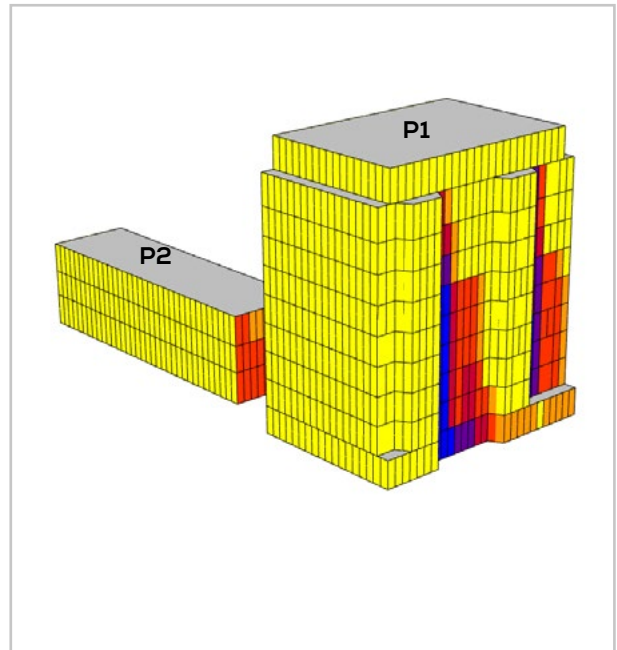
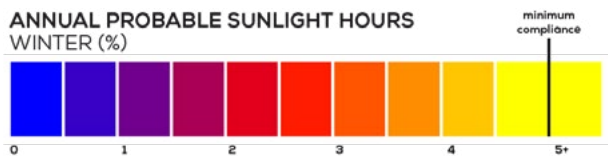


Fig. 144: Plot P - WPSH - View 4





DAYLIGHT POTENTIAL ASSESSMENT - PLOT Q

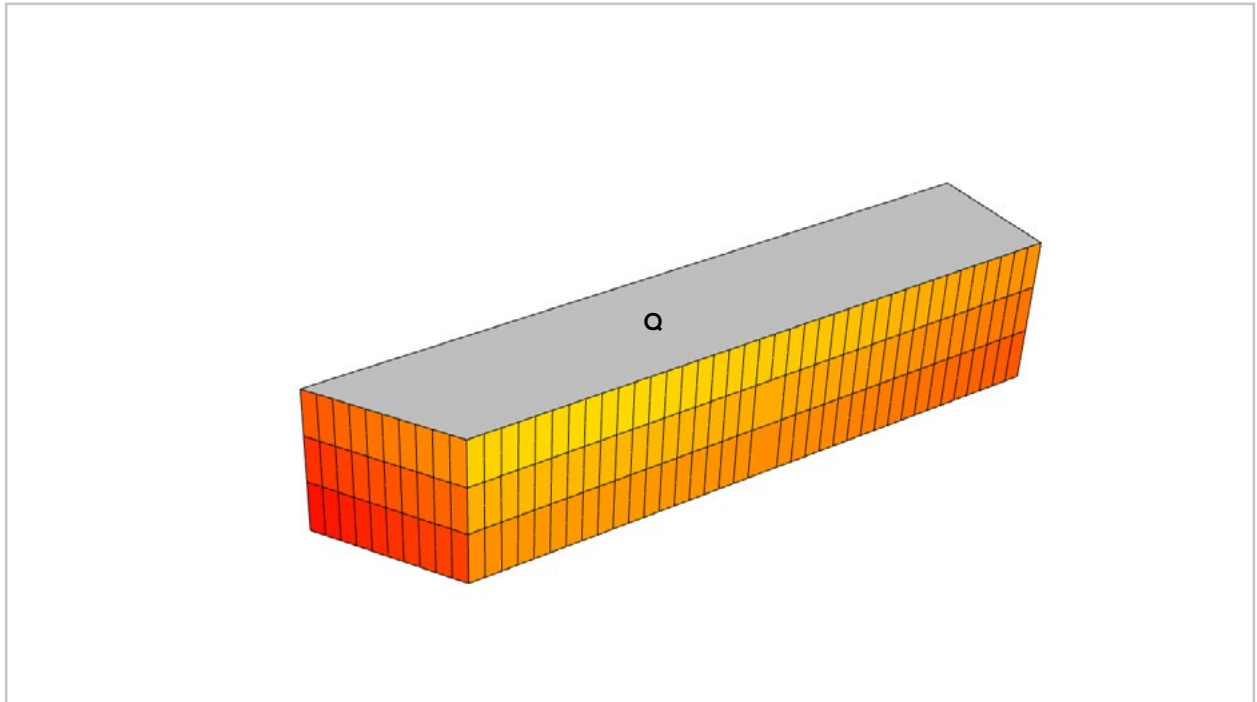


Fig. 145: Plot Q - VSC - View 1

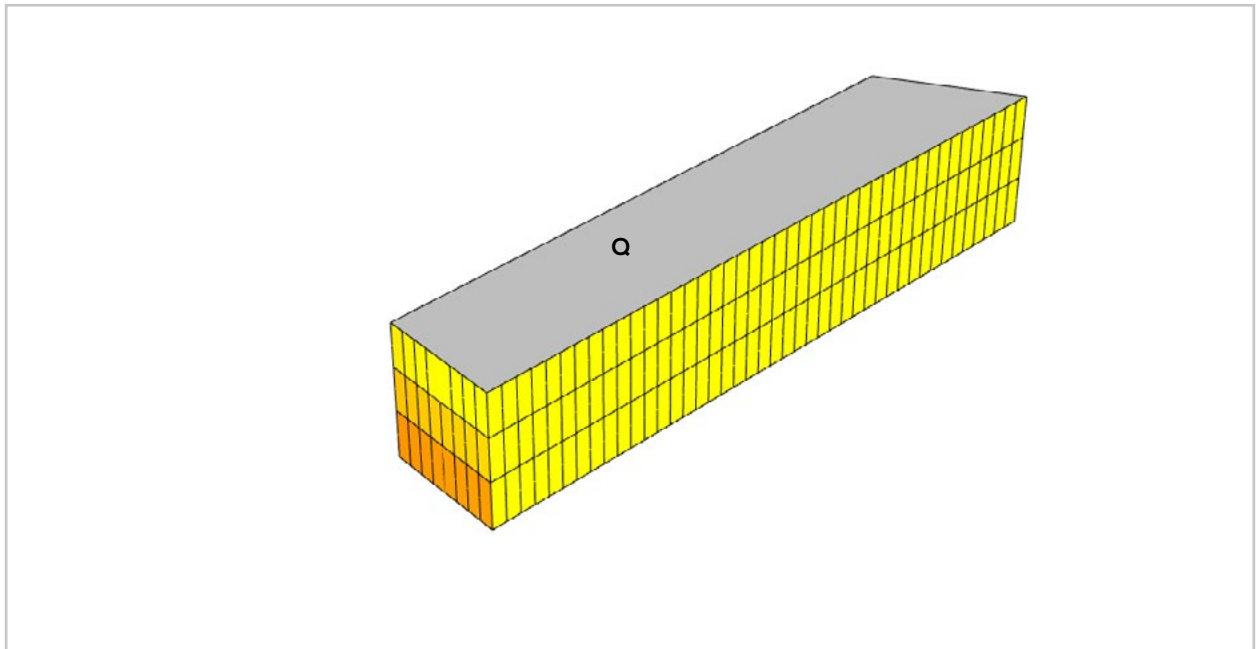
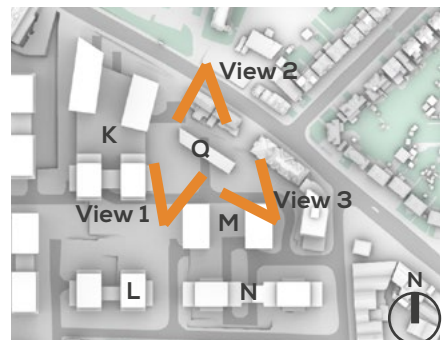
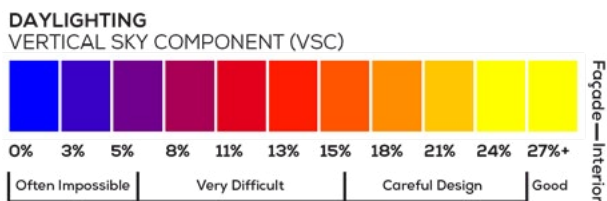


Fig. 146: Plot Q - VSC - View 2



SUNLIGHT POTENTIAL ASSESSMENT - PLOT Q

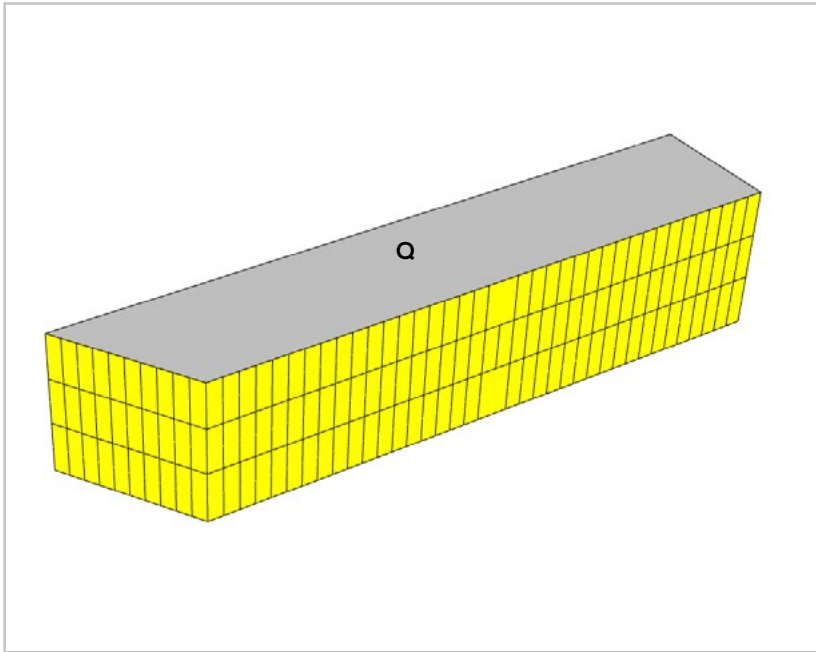


Fig. 147: Plot Q - APSH - View 1

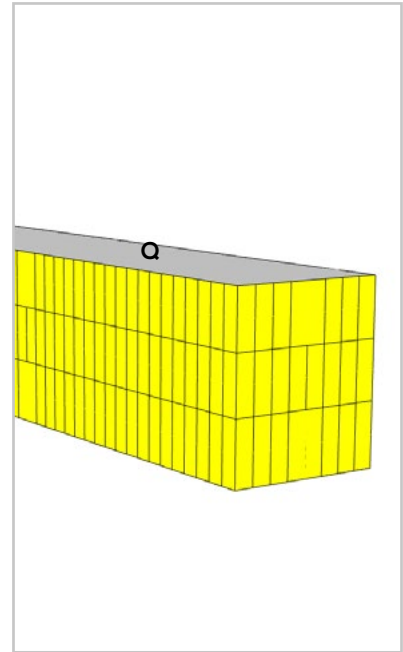


Fig. 148: Plot Q - APSH - View 3

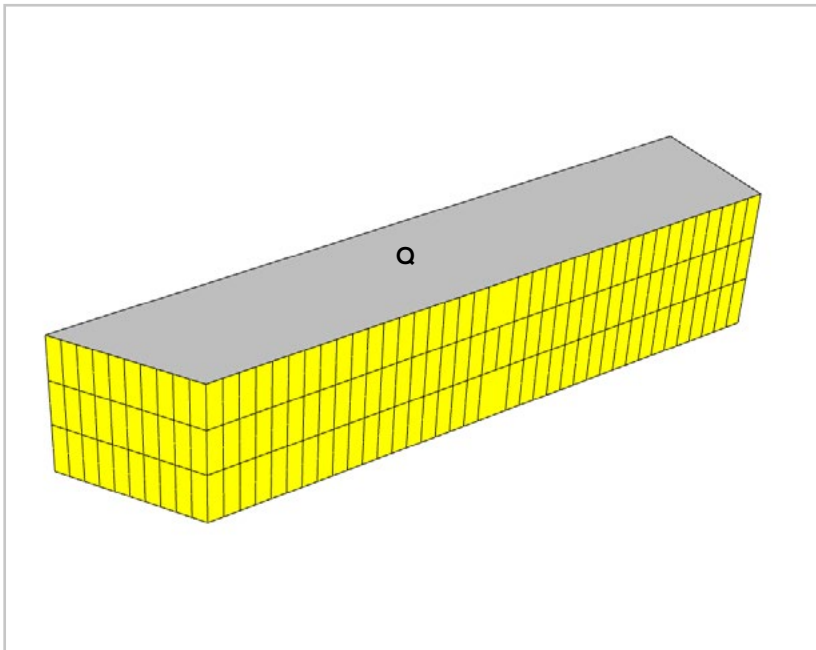
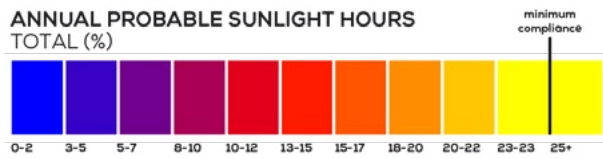


Fig. 149: Plot Q - WPSH - View 1

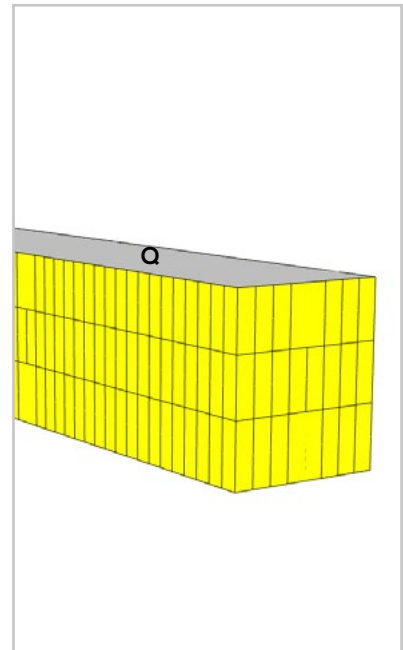
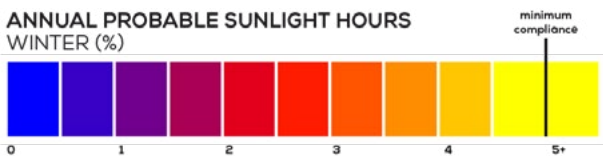


Fig. 150: Plot Q - WPSH - View 3





## 8 SITE-WIDE OVERSHADOWING ASSESSMENTS

**OVERSHADOWING ASSESSMENT  
SUN HOURS ON GROUND**



Fig. 151: Top view

(BRE RECOMMENDS 2+ HOURS OF SUNLIGHT ON 21ST MARCH FOR AT LEAST 50% OF THE OPEN SPACE)



## OVERSHADOWING ASSESSMENT RESULTS

AREA REF.		AMENITY TYPE	AREA SEEING +2HRS OF SUNLIGHT (%)	DATE 50% OF THE AREA IS MET (BRE CRITERIA IS 21 <sup>ST</sup> MARCH)
Public Realm				
	Combined	Public	70	
C1	Plot C MUGA	Public	69	13 <sup>th</sup> March
	Square	Public	67	9 <sup>th</sup> March
Detailed Plots				
B	Plot B Amenity	Communal	100	All Year
C2	Plot C Terrace	Communal	94	24 <sup>th</sup> January
C3	Plot C Terrace	Communal	19	2 <sup>nd</sup> April
E	Plot E	Communal	60	7 <sup>th</sup> March
Outline Plots				
A	Plot A Podium	Communal	93	28 <sup>th</sup> January
D	Plot D Podium	Communal	42	25 <sup>th</sup> March
F	Plot F Garden	Communal	94	All Year
G	Plot G Podium	Communal	9	12 <sup>th</sup> April
H	Plot H Podium	Communal	31	22 <sup>nd</sup> April
J	Plot J Podium	Communal	82	12 <sup>th</sup> February
K	Plot K Podium	Communal	58	16 <sup>th</sup> March
<b>Site-Wide Overall</b>			<b>68</b>	

OVERSHADOWING ASSESSMENT  
 SUN HOURS ON GROUND - ANNUALLY

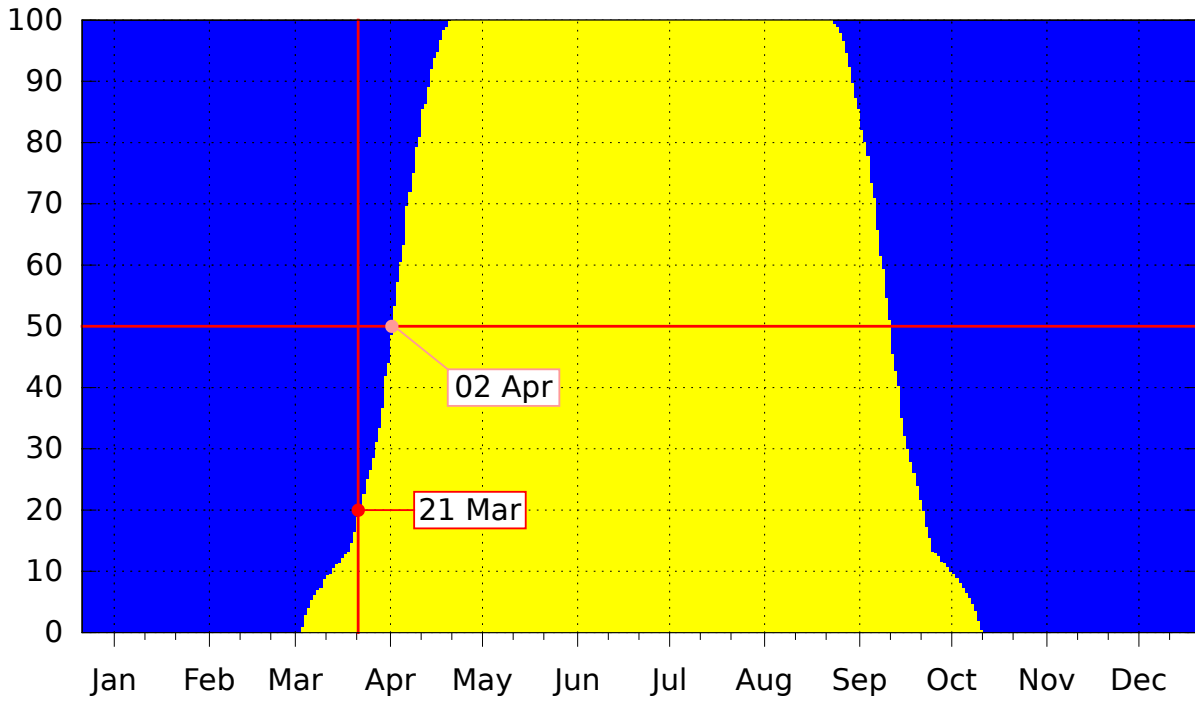


Fig. 152: Annual Sun Hours on Ground - Plot C Terrace (Area C3)

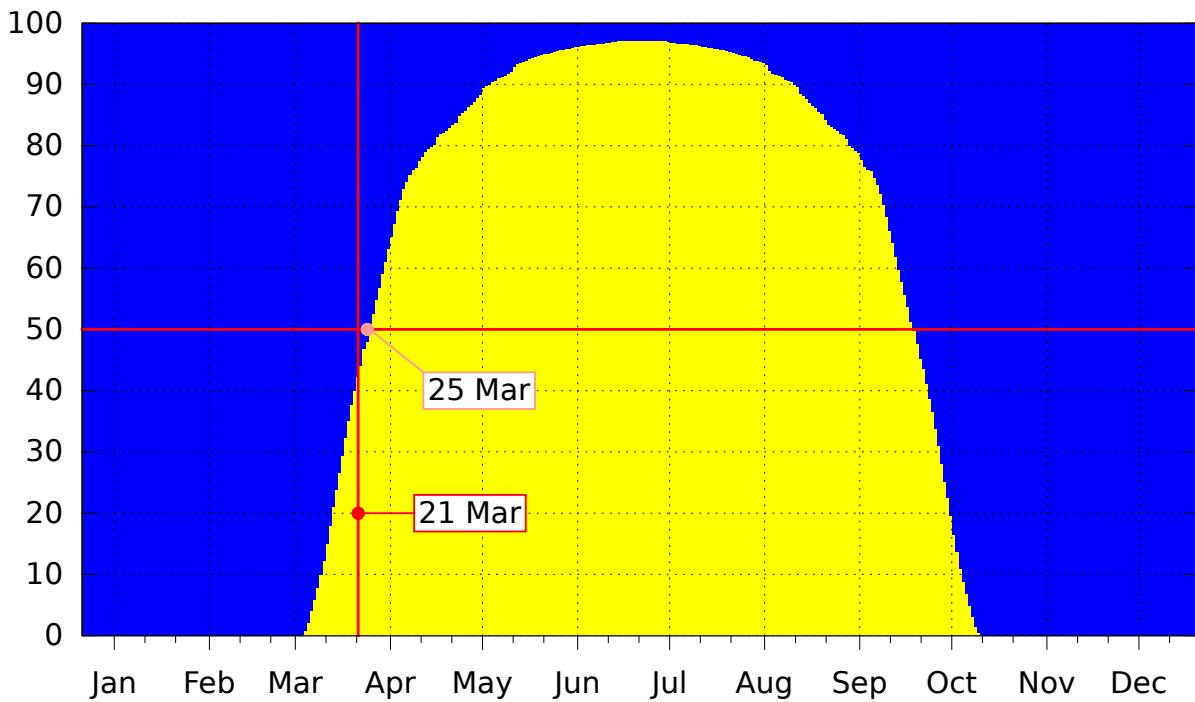


Fig. 153: Annual Sun Hours on Ground - Plot D Courtyard (Area D)

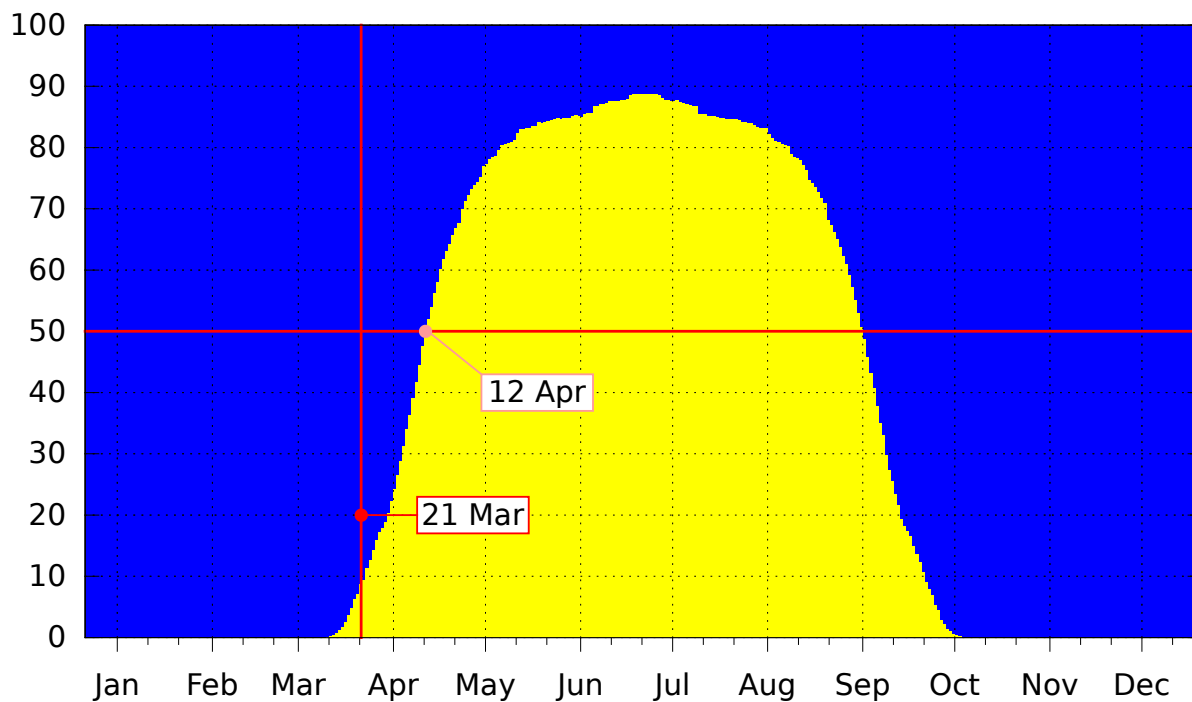


Fig. 154: Annual Sun Hours on Ground - Plot G Courtyard (Area G)

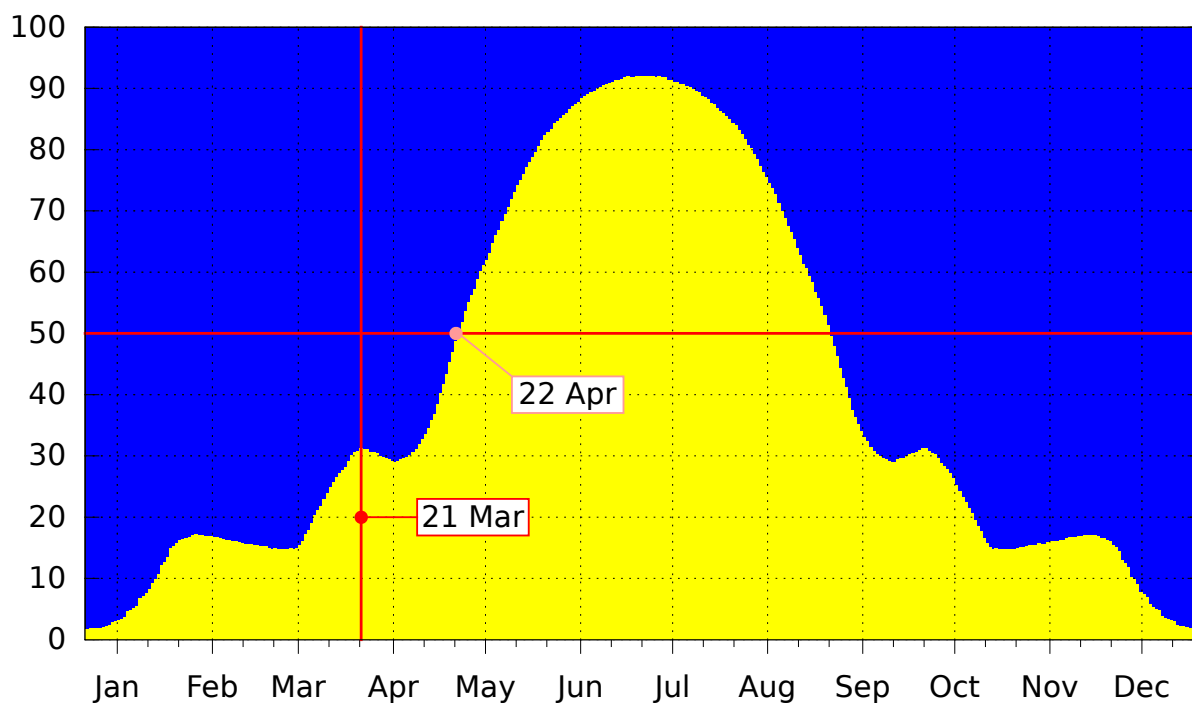


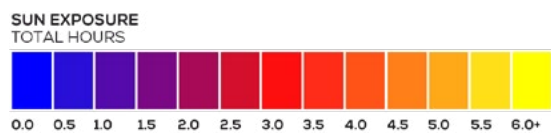
Fig. 155: Annual Sun Hours on Ground - Plot H Courtyard (Area H)



OVERSHADOWING ASSESSMENT - SUN EXPOSURE  
21<sup>ST</sup> MARCH



Fig. 156: Top view

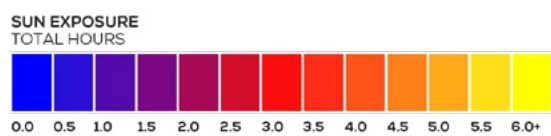


21st MARCH  
(SPRING EQUINOX)  
LONDON  
Latitude: 51.4  
Longitude: 0.0  
Sunrise: 06:08 GMT  
Sunset: 18:05 GMT  
Total Available  
Sunlight:  
11hrs 57mins

OVERSHADOWING ASSESSMENT - SUN EXPOSURE  
21<sup>ST</sup> JUNE



Fig. 157: Top view



21st JUNE  
(SUMMER SOLSTICE)  
**LONDON**  
Latitude: 51.4  
Longitude: 0.0  
Sunrise: 03:50 GMT  
Sunset: 20:13 GMT  
**Total Available Sunlight:**  
16hrs 23mins

**ADDRESS**

THE WHITEHOUSE  
BELVEDERE ROAD  
LONDON SE1 8GA

**CONTACT**

T 020 7202 1400  
F 020 7202 1401  
mail@gia.uk.com

[WWW.GIA.UK.COM](http://WWW.GIA.UK.COM)

**gia**

# The Design Team

## **ACD Environmental**

Arboricultural consultant

## **Architecture in Perspective**

Visualisation artist

## **AWA Consulting**

MEP engineer

## **Base Models**

Physical modelmaker

## **Barton Willmore**

Planning consultant

Environmental Impact Assessment

Townscape Impact Assessment

## **Countryside Properties**

Developer

## **CTP Consulting**

Structural & Civil engineer

## **David Bonnett Associates**

Access and Inclusive Design consultant

## **Ensafe**

Air Quality consultants

## **GIA**

Daylight / Sunlight / RoL consultant

## **Greengage Environmental**

Ecology and biodiversity consultant

## **Hodkinson Consulting**

Sustainability / Energy consultant

## **H+H Fire**

Fire consultant

## **Markides**

Transport consultant

## **Patel Taylor**

Architect / Landscape Architect

## **Pipers**

Physical modelmaker

## **Realm**

Visualisation and verified views

## **Royal Borough of Kingston Upon Thames**

Project Joint Venture partner

## **Soundings**

Community engagement consultant

## **SRE**

Wind and microclimate consultant

## **Terence O'Rourke**

Archaeology and heritage consultant

## **ULL Property**

Viability consultant

## **WYG**

Noise and vibration

# Cambridge Road Estate



48 Rawstorne Street  
London EC1V 7ND  
T +44 (0)20 7278 2323  
pt@pateltaylor.co.uk  
www.pateltaylor.co.uk

Pankaj Patel MBE  
Andrew Taylor

Patel Taylor Architects Ltd  
Registered in England and Wales  
Number 5096844