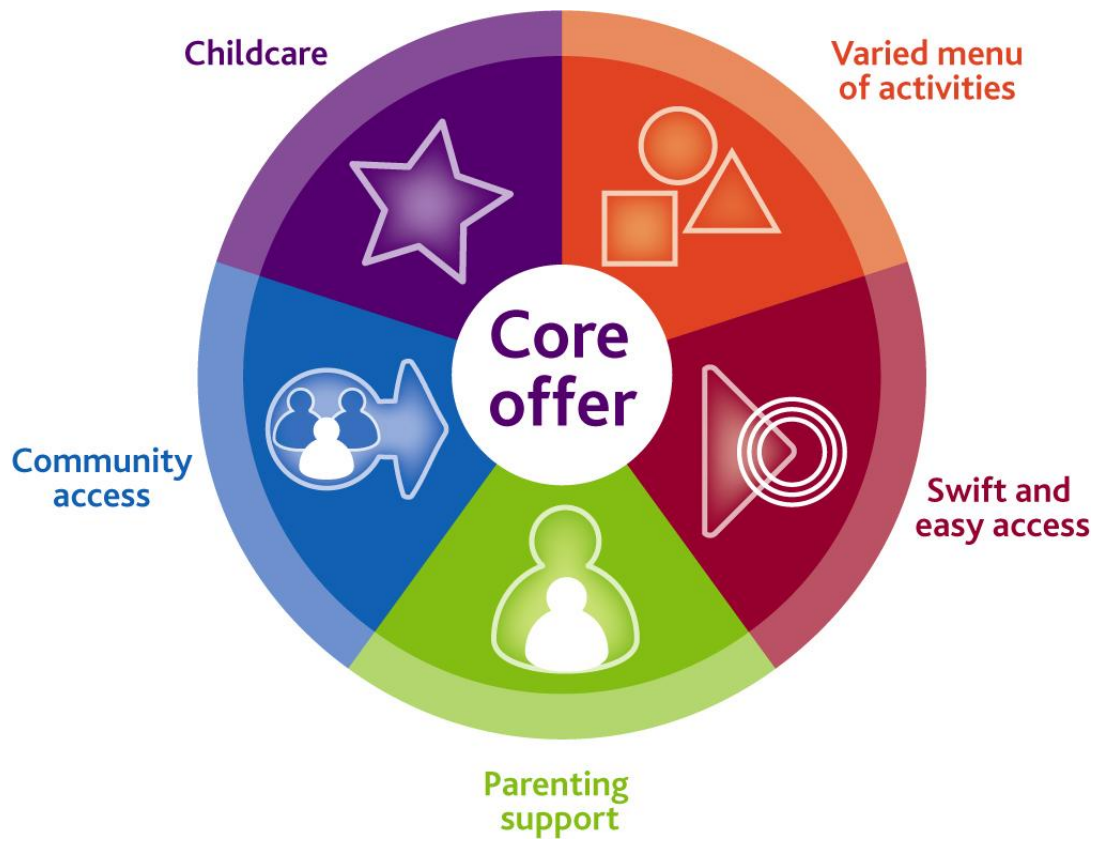


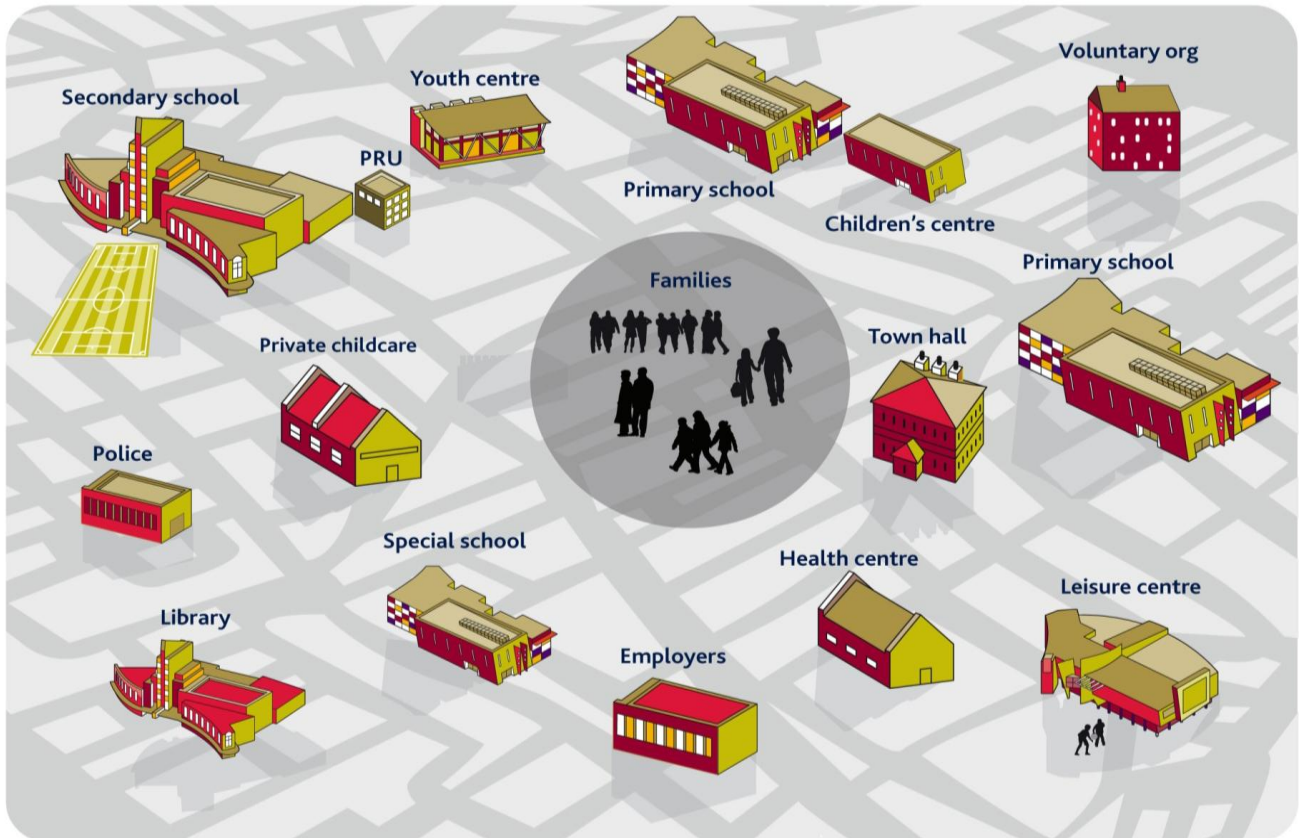
Extended Services

Kingston Town Cluster

April 2010



Extended Services.



Extended services in the Kingston Town Cluster.

Secondary schools

Tiffin Boys and Tiffin Girls

Primary schools

Alexandra Infant school, Fern Hill Primary school, King Athelstan Primary school, Latchmere School, St Agatha's Catholic Primary School, St John's CE Primary School, St Joseph's Catholic Primary School, St Luke's CE Primary School, and St Paul's CE Junior School.

Special schools and pupil referral units.

Bedelsford School, Mecklenburg and Malden Oaks

Children's centres.

North Kingston and Kingston town, Kingston Hill

Private childcare

World of Children, Kingfisher Leisure Centre, The Hawker Centre, Zone @ esporta, Munchkin Club, private childminders, Fun Plus @ St Joseph's, Kingsmeadow Funhouse Club, Kingston United Reformed Church, Dinton Fields, Latchmere, Albany park

Health centre

Canbury Medical Centre, Richmond Road Medical Centre, Fairfield Surgery, Churchill Medical Centre, Fairhill Medical Practice, school nurses.

Voluntary organisations

Kingston Welcare, Oxygen,

Library

Kingston library
Tudor drive library

Police

Grove, Canbury, Norbiton and Tudor Police and Safer Neighbourhood Teams

Youth centre

Searchlight Youth Centre, Kingsnympton Youth Centre, Albany Park Canoe and Sailing Centre, Barnfield youth centre

Local authority

Pupil Support Service, Family Advice and Support Service, Education Welfare, Youth Service, Advancing Services for Kingston Kids, neighbourhood services, Family Learning, Family Information Service.

Leisure facilities

The Hawker Centre, Tiffin Sports Centre, Tiffin girl's community sports centre, Kingfisher Leisure Centre, Kingsmeadow fitness and athletics



Varied Menu of Activities.

Alexandra Infant School- The school runs football, play ball and jump ahead breakfast clubs during the week. At lunchtimes there are gardening and craft clubs and after school the children can access a timetable of football, tennis, multisports, French and dance club. The school has also been able to offer a nurture group for those children who are not yet able to meet the expectations of school life. The school have a council but the children at present do not run any of the activities. KMAS offers recorder lessons in school on Fridays. Alexandra Infants also offer golf as an additional sports activity and often takes part in the multi sports festival and the infant music festival.

Bedelsford School-The school offers sports, music, games, IT and art and crafts clubs to children at lunchtime. There are currently no breakfast or after school clubs. The school is dedicated to children with physical disabilities and has specialist equipment available for them. The school has a school council and with adult support, the children run some activities. Bedelsford joins with the Mount School for choir practise and has taken part in the music festival. Trampolining and swimming are offered as additional sports activities. The school has theme weeks per term such as Around the World and health and also celebrates key multi cultural festivals.

Fern Hill Primary School-The school offers jump ahead before school and at lunch time they offer chess, yoga, Spanish and golf. After school there are up to 20 various after school clubs including healthy eating, science, football, judo, karate, gardening, rugby, showtime, dance, stitchwork, art, pottery, athletics, cricket, bat and ball and book club. The school has an enhanced specialist teacher for ASD. KMAS uses the school every Tuesday evening .Swimming and canoeing is offered as additional sports activities. The school participates in music festivals, country dancing, drama workshops and competitions, performing arts and poetry and writing festivals.

King Athelstan Primary School- Offers a range of sports clubs that rotate on a termly basis before and after school, as well as breakfast club. There is a choir and running club at lunchtimes and the YMCA offer after school club until 6pm. Football is also offered after school. There is a school council, but children do not yet organise any activities. KMAS offers drumming, singing

and individual lesson tuition. For Years 1- 6 there is one term of swimming held at the Kingfisher Centre. King Athelstan also participates in the infant and junior music festivals, country dancing and the Landirani trust projects.

Latchmere School - Breakfast Club is available for children before the start of the school day and the After School Club runs until 5.45 p.m. throughout the year, in excess of 20 clubs are offered in addition to 3 choirs and an orchestra. Many of the clubs take place after school; some, including Pottery, Colouring, Cartoon and Meditation run during the KS2 lunch hour. KS1 offers Woolcraft, Dance – Bites, Talent, Friendship and French during their lunchtime. Parents of the participants are involved in some of the activities offered. There are three Nurture Groups which run in the afternoons, one of which is for Reception children with social communication difficulties. There is a School Council for pupils in Reception to Year 6 and the children run a colouring club. KMAS offers drama and music lessons in a range of instruments. There is a Homework Club which is available for children who, for a variety of reasons, find it difficult to do their homework out of school. Latchmere offers sports activities not only as part of the curriculum but also through after school clubs. Every child from Year 1 to Year 6 has swimming lessons in Latchmere's on – site pool and pupils may also pay for top-up lessons. Children may take part in multi - sports events, the junior and borough music festivals. Cycling Proficiency is offered to children in Year 5

Malden Oaks and Mecklenburg Pupil Referral Units-The school offers recreational activities in the common room during lunch time and as the school is for behavioural and emotional needs the programme is time tabled to suit this. Pupils have access to a health and fitness club and they take part in black history week and Kingston Museum creative workshops such as poetry and local history.

St Agatha's Catholic Primary School- The school offers ANSUA learning connections to KS2 pupils before the school day starts and at lunchtime there are French, Spanish and recorder clubs that the children can access. After school there are many clubs including book club, home learning, Spanish, multi skills, tennis, netball, creative arts, stitch club, football, street dance, tae kwon do, golf, art, gardening, choir, athletics, basketball and more. Swimming is also offered to year 4 non swimmers. The school also has a school council and the Year 6 House Captains organize events and activities to be run at school. The Kingston Music and Arts Service offer individual after school music lessons. They also run the recorder lessons at lunchtime. Yr 4 children are learning to play the fife this year. St Agatha's also offers country dancing to Year 2, and involves itself in many projects including: European Day of Languages, Kingston in Bloom, Inter School Quiz Club, Lifeboat Day and the choir sings at various events during the year.

St John's CE Primary School-The school offers netball from 8.15-8.45 to Years 5 and 6. At lunch time there is recorder club for Year 2 and Litter Club for Year 5 and Knitting Club. After school there are various groups including Dance Club for Years 4, 5, and 6, Chess Club for Years 2-6, choir for KS2, Art Club for Years 4-6, Drama Club for Years 1 and 2, Football Club for Years 5-6

and indoor sports for Year 3. KMAS offers music lessons and class 6 have a brass band. Additional sports activities are swimming, rugby and tennis. The school also participates in infant and junior music festivals, country dancing and 02 singing. We have a breakfast club and after school club which are fee paying and subject to Ofsted regulations. There are numerous other opportunities provided by visits to such places as Stanley Picker art gallery, Kingston Library and museum and trips to the Rose theatre.

St Joseph's Catholic Primary School- The school offers 'Fun Plus' breakfast club at the start of the school day. At lunchtimes there are a range of clubs offered including recorders, home learning, CC4G (IT), SMSA play leader activities, sports club, school council, science club and also stories in different languages. There is also 'Fun Plus' after school club as well as a variety of free after school activities- including cooking, sewing, netball, football, drama, gardening, IT, Latin, golf, Spanish, hockey and art. We now offer karate clubs. The children organise peer mentoring, playground buddies and the prefect scheme. Kingston Music and Arts Service Wider Opportunities scheme offers weekly African drumming tuition in year 3. Tiffin School offer specialist teachers for dance and singing. And Kingston Grammar School offer Latin clubs for Year 5 and 6. St Joseph's is also able to offer swimming to years 3 and 4 and top up swimming groups to years 5 and 6. Partnership with Kingston College offers gym/dance and games sessions, as well as Kingston Sports Partnership offer basketball, tennis and cross country opportunities. The school participates in the Infant and Junior music festival, country dancing, KS2 Spoken Word project and Orange Tree Shakespeare drama. The active school council is made up of 2 children from each KS1 and KS2 class. Cycling proficiency is available to year 5 & 6.

St Luke's CE Primary School-The school offers a variety of activities before the school day begins including; football, cricket, fun fitness, skipping team, netball, ICT, breakfast club and wake and shake in KS1. At lunchtime children can enjoy recorder, chess, guitar, steel pans, cooking, gardening, wildlife, massage, and reading clubs. After school there is knitting, rounders, tennis, basketball, tag rugby, judo, drama, street dancing, after school club and real runners. For those children without access to computers at home there is an ICT club. The school has a school council made up of 2 children from each KS1 and KS2 class. It is run by 4 Year 6 children and overseen by the deputy. Children run the Wildlife Club and Year 6 children support staff in Skipping and Gardening club. KMAS offers violin lessons across KS2. Additional sports activities at St Luke's include swimming for Year 2 and 3 and top up sessions for upper KS2. Cycling proficiency is available in Year 5. The school participates in infant and junior music festival, country dancing, reader's festival, sporting competitions, library project, junior citizenship and all choir activities.

St Paul's CE Junior School-Offers fun fitness, cricket club and rounders before school and chess, French, JC (Jesus Christ bible study), gardening club and also high 5 at lunch times. After school activities are football, basketball, cross country, drama, country dancing, IT, and art and craft club. St Paul's has a school council and the children organise lunchtime Lego club.

KMAS offers guitar, piano, violin, flute and drums. Year 4 children access swimming for 10 weeks at the kingfisher centre. In the spring term the school participates in the rose theatre concert and in the summer the country dancing festival at Tolworth girls.

Tiffin Girls School-The school offers many clubs at lunch time including various music groups such as a range of choirs, orchestras, wind band and a range of music groups. There are a wide range of sports activities - badminton, hockey, cross country, athletics, netball, dance, football, drama, science mentoring in English, mathematics, science and languages, puzzle and games, chess, art, Japanese language & culture and rowing. After school there are also music lessons, orchestra, hockey, netball, choir, Tai kwon do and mandarin. There is also an opportunity for students to take part in the Duke of Edinburgh Award – currently large numbers of girls do bronze & silver. The students participate in School Council as well as having trained student researchers and peer counsellors. At KS4 & KS5 students have the opportunity to have lessons in golf, canoeing & kayaking, swimming, sailing, volley ball, street dance etc

Tiffin Boys School-The school offers over 37 different after school clubs or wider opportunities to its students, including drama youth orchestra, children's chorus, rugby, cricket, rowing, badminton, basketball, cross country and the boys' dance company. The school is also involved in a project called Tiffin broadcasting network whereby students run a television network recording the developments of the school and its students. There is also an opportunity for students to take part in the Duke of Edinburgh Award. Tiffin has a school council and students run various clubs from year to year. All year 7 students have swimming lessons, and golf, hockey and tennis is offered off site as additional activities. Tiffin is currently involved in the Korean project at the rose theatre.



Parenting Support.

All schools receive support from the Family Support Service. The Family Support Service sits within the Early Intervention and Prevention arena that forms part of the Prevention and Cluster Services remit. The Family Support Service (FSS) offers practical, responsive tailored packages of support to identified children, young people and their families across the Royal Borough of Kingston upon Thames. They work directly with consenting targeted families that have been referred via the ASKK (Advancing Services for Kingston Kids) system with the aim of empowering parents allowing them to focus on the positive aspects of parenting and helping support their child during their development. The service forms a key part of the Early Intervention and Prevention framework that works at a non-statutory level to help reduce the number of statutory referrals, to provide early intervention which is responsive and constructive, to signpost to appropriate services, liaise with multi-agency partners and above all Safeguarding cases. The service works closely with schools and a range of partners, agencies and key stakeholders to ensure that collaborative working systems are maintained and that communication channels are open and transparent. Multi-agency working is a key responsibility of the role.

The team comprises of three strands which are:

Cross Borough Family Support Workers - covering a range of interest areas such as Fathers, BME/EAL, Complex Needs working with the families of children and young people aged 5 – 19yrs across the Borough. Currently there are 4 cross-borough Family Support Workers in post.

Cluster Attached Family Support Workers - working with families of children and young people aged 5 – 19yrs within an allocated cluster of schools. Currently there are 4 Cluster attached Family Support Workers in post, 1 per cluster based in a cluster school.

Children's Centre Attached Family Support Workers – working with families with children aged 0 – 5yrs. Currently there are 12 children centre Family Support Workers each attached to a children centre.

Alongside the casework aspect of their role the Family Support Workers (FSWs) are also trained to deliver parenting support classes, and also organise drop-in clinics in some of the schools to provide informal advice and support to parents both on a 1 to 1 basis or groups where appropriate. Many of the FSWs have special interest areas such as English as an Additional Language or working with fathers.

The Family Support Service Team also collectively organises a range of activities and events during the school holiday periods to offer families affordable, informative opportunities to enjoy time together at convenient and accessible locations across the Borough. The majority of events are universal however they may also arrange targeted activities where the need has been identified.

Schools also provide direct support for families according to the needs of their school:

Alexandra Infant School-The school runs several information sharing meetings as and when appropriate throughout the school year. Learning focused meetings around phonics, talking etc are also offered. The school offers 'meet the teacher' mornings at the beginning of the school year, for all classes. There is a curriculum talk for all parents also at the beginning of the school year. New parents have a parent's evening the summer term before their child joins the school. Parents evening are offered during the day and workshops are offered to parents who are able to support in school e.g. fact finders workshops, fine motor skills. Alexandra are planning to offer a Monday morning drop in session run by the family support worker attached to the school via the children's centre. The school holds an open evening in the summer term and regular school tours with question and answer sessions. Parents are encouraged to use a drop in system if there are any concerns or questions. Home visits are arranged for children new to the school, and opportunities for parents to spend time with their children entering nursery are offered. The school also offers meet the teacher opportunities to meet with class teachers and TAs. The school are also offering a SEN workshop with both the junior school SENCO and KS1 SENCO to help parents/carers understand the process of transition for children with SEN this is in cooperation with St Paul's. There are also termly EAL tea parties. The school provides parents with weekly newsletters and handouts with information about other services. They also target parents and pass information on regarding relevant services to their families needs.

Bedelsford School-The school holds parent information sharing meetings on curriculum delivery e.g sex related education, physiotherapy programmes and managing behaviour with the Education Psychology service. Parent's

evenings are held 3 times a year and parent's workshops are run termly. Parent drop in sessions are run in conjunction with the school therapist. Every year the school holds an open day. Transition plans from Year 9 upwards are reviewed annually to help with the move in school years. Visits to new schools are also arranged. The school signposts to additional services via annual reviews, school website and information leaflets and brochures given to parents.

Fern Hill Primary School-The school offers year group parent meetings at the beginning of each academic year and holds parent's evenings termly. Curriculum parenting workshops in the core subjects are offered as well as regular drop in sessions for parents of nursery and reception children. The school has a FASS therapist who works with families. Parents are able to request a meeting with staff at any time and where possible will be seen straight away. For parents of children going through transition periods the school holds meetings to inform parents of secondary school information and to discuss choices. Regular informal meetings are also offered if there are any transition concerns. For parents of children with ASD a support group is run twice termly and modelling sessions for parents of EAL or AEN nursery pupils. The inclusion manager passes information either verbally, through the post or in newsletters about additional services available.

King Athelstan Primary School- Offers an open door policy to parents to drop in and speak to staff. The school offers parent tours by a member of the SLT. They also offer half termly parents workshops, weekly achievement assemblies, half termly topic weeks including an open morning each half term and parent meetings for key year groups. There are 3 parents evenings held, one each term. The school also offers housing drop ins on a monthly basis. Family learning are currently running an IT course and plan to access more in the future. The PCSA is very active within the school. All new pupils in the nursery and reception have a home visit as part of the transition process. The school is active in signposting to services. This is done through leaflets displayed in foyer, personalised direction through 1-1 meetings, referral to ASKK, CAF and through the Family Information Service.

Latchmere School- The school offers parent tours, pre-admission meetings, home visits for new Nursery and Reception children and at the beginning of every school year there are 'meet the teacher' sessions. In the summer there is a transition visit following Sports Day. The school holds an open day every November and has an open door policy for all parents. Parent consultation evenings are held in the autumn and spring. There are Curriculum Evenings and Maths Mornings which parents are invited to attend and there is a Parent Council. Support within school offers English to Speakers of Other Languages, (ESOL). For the first time this year, Latchmere holds coffee mornings for forces' families living in the Keep. Parents are invited to attend meetings before all residential trips. Years 2 and 3 receive transition support as do Year 6 pupils transferring into secondary schools. Some children and their parents are supported on visits to Secondary Schools by a member of staff and a few pupils may need more opportunities than their peers to familiarise themselves with their new environment. ASD support groups are

run regularly in the school's Topaz provision and information about services available is sent to parents of children with a range of social communication difficulties. Whenever possible, the Inclusion Manager visits children with special educational needs who are transferring from another setting. SEN reviews and other meetings are held with the Inclusion Manager or members of the Leadership Team. The school signposts parents to services through the CAF process, ASKK, Family Support Workers, the Disabled Children's Team, etc. Latchmere has a Family Support Worker based in the school and the North Kingston Children's Centre is based close by. Workshops are offered to help in matters such as toilet training. Leaflets are also sent home and are available in the school office.

Mecklenburg and Malden Oaks Pupil Referral Units- The school offers regular reviews for parents and agencies and these are held half termly. The school operates an open door policy to parents and carries out home visits when appropriate. The school works closely with Welcare, social services and Young People's Service amongst others to offer additional support to its pupils.

St Agatha's Catholic Primary School-Parents are invited to curriculum evenings, twice a year they hold parent's evenings and reports are sent home at the end of the summer term. Curriculum workshops are also held but the school also offers an open door policy for parents to drop in. A meeting for reception parents is held yearly. The school's PTA is active and supportive and the school has a Parent Council. For parents with children going through the transition stages, the school offers liaison with secondary schools and information meetings are held for parents with children going from KS1 to KS2. Children entering Nursery are offered home visits. The school is active in signposting parents to other services not offered in school- this is achieved by making leaflets available and talking to parents about their needs. Links to specific services and websites that offer parental support and advice are on the school's website.

St John's C of E Primary School-The school offers a new parents evening, meetings with head teacher, curriculum evenings and 3 class based parent's evenings throughout the year. Parent's evenings are held at the beginning of the academic year in spring term and at the end of the academic year. Parents are welcome through their open door policy at any point during the year. Nursery children are offered home visits and individual support is given if needed for children with EAL or SEN. The school arranges meetings or passes information about additional services to families as requested.

St Joseph's Catholic Primary School- The school holds parent tours and open mornings for new Nursery and Reception children and parents each year. There are also year group parent meetings at the start of each academic year and termly parent consultation evenings, including opportunity to meet with our Inclusion leader. SEN reviews and other related meetings are held with the Inclusion leader. Maths parent workshops are offered termly as well as residential trip and school transition parent meetings each year. The school offers home visits for both Nursery and Reception children prior to starting at

school. Curriculum workshops and borough consultant led workshops are offered to parents e.g. Occupational Therapy. The school lay chaplain is available through each week to support both parents and children. The PTFA and school offer coffee mornings for parents and support meetings for our new to English parents. Family Learning courses run in art and music. There is an open door approach at school where parents requesting a meeting are seen as soon as possible. A Parent Partnership group is established and they meet each half term. The school signposts parents to services through the CAF process, ASKK and Family Support Workers. The school has leaflets available to parents in the parent waiting areas about other services and some information leaflets have been translated into main community languages. There is also information available on the school website

St Luke's C of E Primary School-The school holds 3 parent's evenings annually. There is daily information sharing via letters and the school website. The nursery also holds a coffee morning for parents. Parent workshops are held for KS1 reading and numeracy methods of teaching. There is also class introduction meetings and ICT workshops. The parent's association is attended by KS1 and KS2 parents and many staff. The Family Support Service run parenting classes and the school has close links with Welcare and FASS. Open days are held once a year and the school operates an open door policy to parents. At transition periods the school holds a yr 6 transition meeting and also for KS1 into KS2. There is also the new reception meeting and transitions programme. The school visits new pupils and signposts to services via notice boards, class teachers and SENCO meetings.

St Paul's CE Junior School-The school holds annual year group meetings and school meal working party meetings. Parent's evenings are held 3 times a year in autumn and spring. In summer there is an exhibition evening of children's work and reports. Workshops are held for transition, literacy, maths, and science. The school has a system of class parent representatives that meet twice a term. The SENCO offers meetings with parents to work on home strategies for behaviour/coping. The school has a parent's association and offers an open door policy to all parents. With transitions support the school has good links with the infant school and there is an induction afternoon for new parents in June. Visits to the school take place in autumn term. The Year 3 teacher visits new intake in the summer term.

Tiffin Girls School-The school has open evenings every October and tries to keep in contact with parents via email whenever needed. The school website is kept up to date with news and a parental calendar. There are numerous meetings with individual parents and Heads of Year and the SENCO as necessary or requested. Parents attend evening sessions relating to transition, options choices, trip planning, Duke of Edinburgh award, governors AGM, careers, study skills, PSA events, and performances.

Tiffin Boys School- The school holds open evenings for sixth form and Year 7 entrants in October of each year. There are parents' evenings, head's question time and individual meetings when requested either by the school or parents. The TPA holds parent workshops on topics such as adolescence

within the school. At transition times the school holds evening sessions for parents of new boys with form tutors and heads of years. The website is kept up to date with newsletters and calendars of events for parents and pupils to use.



Childcare

Alexandra Infant School- The school runs a breakfast club daily for its own and St Paul's junior school children from 7.45-8.50am. At present there is no after school or holiday provision but with the Children's Centre being built there may be scope to develop. The school links in with local playgroups through the early years and foundation stage cluster meetings.

Bedelsford School- The school does not offer breakfast or after school provision but liaises with RBK termly to ensure all pupils are offered some holiday provision. The school visits local pre-schools and also offers them visits to ensure communication with other local providers.

Fern Hill Primary School-The school doesn't offer a breakfast club but does have after school provisions through the Hawker Centre until 5pm. During holidays the school often has sports holidays clubs running on the school premises and most holiday provision is organised for pupils to attend at other centres. The school links in with local childminders through asking them to contact the school office and with local pre schools and playgroups links are through foundation stage staff visiting them each year in the summer term.

King Athelstan Primary School-The school runs a breakfast club from 8-9am and the YMCA offers both after school provision until 6pm and holiday provision at Easter and during the summer from 9am-5.30pm. The school offers crèche facilities when needed for events. The school liaises with the Family Information Service to keep informed about local childminder's. The foundation stage has worked hard to develop links with local playgroup and pre schools are invited to events in the school. Each year there is a picnic that all attend. Staff are also invited to Early Years Foundation Stage network meetings which are rotated around the cluster schools

Latchmere School-The school offers a breakfast club from 8.00 -8.55am and after school provision until 5.45pm. Holiday provision is offered for every school holiday with limited availability over Christmas. The school offers crèche facilities for events where possible. Latchmere has developed close links with local pre-schools and groups and liaises with them via the Children's Centre.

Mecklenburg and Malden Oaks Pupil Referral Unit-The school offers a breakfast club on a needs basis but at present there is no other provision for after school club or holiday provision.

St Agatha's Catholic Primary School-The school does not run its own breakfast club, after school or holiday provision but feeds into Latchmere's and the Hawker Centre. During Parent Consultation Evenings and Reception open days, crèche facilities are offered to parents. The school contacts local pre-schools and playgroups before the children come into Nursery and Foundation Stage teachers have links with them through cluster group meetings and the Early Years conference.

St John's CE Primary School- The school does not offer a breakfast club at present but is hoping to start this after summer half term. There is after school provision on site but no holiday provision. Crèche facilities are available for workshops being attended during school time. The school links in with local playgroups and providers via the Kingston network meetings

St Joseph's Catholic Primary School- The school offers a breakfast club from 8-9am and after school provision until 6pm. Holiday provision is available from Easter 2010 through Fun Plus. The school also signposts families to provisions, such as the Kingfisher. Crèche facilities are offered where possible. Nursery and Reception staff attend partnership meetings with local nursery and playgroups to ensure good liaison and also circulate information flyers.

St Luke's CE Primary School-The school offers a breakfast club on site from 7.45-8.45am and after school clubs until 6pm. During the holidays there are sport and craft clubs available. The school liaises with local pre schools and childminders through transfer meetings and through informal communication.

St Paul's CE Junior School- Breakfast club is shared with Alexandra. The school offers after school clubs and signposts to local providers if necessary. This is also the case for holiday provision. The school links in with local playgroups and nurseries through advertising local providers and referring to them based on the needs of the children.

Tiffin Girls School- The school offers a variety of clubs after the school day which all can participate in. The ICT suite is open to allow students to work after the school day ends. Occasional holiday clubs are run through the Community Sports Centre.

Tiffin Boys School- The school offers a variety of clubs after the school day which all can participate in or boys can choose to use the library after school for studying. There is no breakfast club, and during the holidays clubs are run via the sports centre.



Swift and Easy Access.

All the schools have access to Advancing Services for Kingston Kids (ASKK). This service shares information and co-ordinates support to ensure children and young people get help they need when they need it. This can include signposting to relevant services, logging information on early warning signs, involving a single agency to meet a need, co-ordinating multi-agency support package to address complex needs or to refer on to the Safeguarding Service. ASKK is the referral pathway for the Pupil Support Service, Education Welfare, Youth Services, Education Psychologists, Family Advice Support Service and other services. All the schools receive regular updates from ASKK so they know who is known to council services, what the issues are, what support they are receiving and a key contact professional. All the schools have had the opportunity to send staff to Common Assessment Framework training and have identified members of staff to undertake Lead Professional Role as required. The schools all have a designated Child Protection Officer that can link directly into Safeguarding Services.

Alexandra Infant School- The school has visits from the local police to run sessions within school. Health, speech and language, social services, ASKK, occupational therapy, FASS, FACT, and educational welfare are involved with school pupils. Children with additional needs have access to solution circles- intervention 360- leading to personal support plans, circle of friends and nurture group.

Bedelsford School-The following external agencies run sessions from the school- community police, medicals with paediatrician, wheelchair services and arthotics and the rotary club. The school liaises with ASKK, dieticians, educational psychologists, transport, community groups, Fulham Football club, local schools for integration, dentists and pre-school advisors regarding the pupils in the school. For children with additional needs there is access to a play therapist and a school councillor.

Fern Hill Primary School-Within school the police, fire brigade, tooth fairy healthy eating (Sainsbury's) and the church all run sessions from school. ASKK, FASS, health services, medical services, EP's, OT and physiotherapy are liaised with regarding pupils in the school. Children with additional needs have access to various additional groups in school such as social skills, and

nurture groups. The PSHE coordinator provides mentoring/listening support and divorce/bereavement support as needed.

King Athelstan Primary School-The school has housing and the local police who offer sessions within school. ASKK, social services, health, Woodroffe, FACT, FASS and other schools all link in externally. Children with additional needs are supported through staff making themselves available at break and lunch time to support. Senior staff offer 1:1 mentoring and support. Any other agencies that visit will also offer support.

Latchmere School-The police, fire service, road safety and health services run sessions within the school. The school makes extensive use of the Educational Psychology, Occupational Therapy and Speech and Language Therapy services. There are links to the Moor Lane Children and Young People's Development Service, the school nurse, FASS and FACT. Children with additional needs are offered support by designated members of staff in the form of counselling, mentoring, buddies, social skills groups and family support. There is emotional literacy for all.

Mecklenburg and Malden Oaks Pupil Referral Unit-The police, Straight Talking, careers, youth service all run sessions from the school. There are many agencies that the school link in with about pupils including education welfare, educational psychologists, youth offending service, FACT, FASS, youth service, IYSS nurse, substance misuse, YISP Caseworkers and learning support. Each pupil has a personalised programme and has access to the school's own councillor.

St Agatha's Catholic Primary School- The school has external links with Educational Psychologists, Speech and Language Therapists, Occupational Therapists, FASS and ASKK. For children with additional needs, provision has been made so that non-fiction and fiction books are delivered to them once a term.

St John's CE Primary School- The school runs sessions for local police, EP and family support workers if needed. The school liaises with EP, GP'S, OT, speech and language, FASS, Welcare, Kingston paediatrics NHS and health visitors in conjunction with their children. Children with additional needs have access to parental and support plans.

St Joseph's Catholic Primary School- The school has visits from the local police, Road Safety, Fire Service and drama groups. Many agencies such as Speech and language, Occupational Therapy, Educational Psychology Service, Educational Welfare Officers, ASKK, FASS, FACT and social services are all linked to the school. Family Support Workers, Health Visitors and school nurse are offered. Children with additional needs have provision maps, interventions and personal plans. Access to learning and behaviour mentoring, buddies and 'talkabout' and 'chatterbox' groups are available. A new 'Nurture group' will be starting in June 2010.

St Luke's CE Primary School-The school hosts sessions on behalf of Transport for London, road safety, local police and fire service and drama groups. Within the school FASS, wellcare, ASKK, FACT, educational psychologists, speech and language therapists and school nurse are all in liaison with regard to pupils. For children with additional needs health visitors, the primary care trust, and Family Support Service are offered. In addition to this provision maps, buddy schemes, and intervention programmes are also incorporated.

St Paul's CE Junior School-The school uses ASKK and FASS as external agencies for their children and are hoping to start play/art therapy for children with additional needs.

Tiffin Girls School-In addition to accessing the services provided by the borough the school also has links with other external agencies such as Kaleidoscope who deliver a workshop to parents and pupils.

Tiffin Boys School- The school accesses services offered by the local authority and the borough as well as neighbouring boroughs such as Richmond and Merton. They also link in with Educational Psychology, Social services, ASKK and Anstee Bridge Project. Tiffin has previously run some sessions for school nurses on the premises. Children with a Special educational needs statement receive 1:1 support with a specific teaching assistant. There is also an inclusion support mentor offering internal counselling and one to one support. Transition support is available in small groups or on a one to one basis, for Year 7, 11 and sixth form (this is identified through previous schools). Some drama therapy is available. There is also some small group work for social skills along with 1.5 days a week support for literacy for those with Dyslexia and Dyspraxia. The school is accessible for all downstairs rooms for those who use Wheelchairs. There is also some support for EAL.



Community Access.

Alexandra Infant School- The school has a Children's Centre and activities are currently being planned in consultation. Alexandra has links with St Paul's Junior school, Bedelsford, Kingston University art department and Richmond Park who all come into school to work with the children.

Bedelsford School-A local church group uses the school every Sunday as well as Gemini swim school, water babies and water nippers. Age concern, rotary club, New Malden golf club, Active Age, fire brigade, Kingston University students and local school pupils link into the school.

Fern Hill Primary School-The school has links with Kingston Music and Arts Service and the Kings' church who use their facilities. Local secondary school pupils frequently visit the school to support children on a regular structured programme.

King Athelstan Primary School- The school has recently had the Kingston Town Children's Centre built on site. A full programme of sessions is in place and reviewed each term. The school makes the halls and the Athelstan Centre available to hire to the community. YMCA run the after school club from the KAC daily and karate, kung fu, slimming club and Punjabi classes are all held in the school weekly. The school works closely Age Concern with volunteers coming in to hear readers and children visit the Bradbury centre to socialise and interact with the senior citizens there. The school is just becoming involved with the Landirani Trust charity who works with children in Malawi. Bedelsford and King Athelstan link in and attend each other's events and also read together. Kingston University students volunteer in the school and work experience students from Hollyfield and other local schools are taken on as well as Baylor students from America who visit on an annual basis.

Latchmere School- The school has access to the North Kingston Children's Centre where the programme of activities offered includes Stay and Play, referral under 1 sessions, appointments with a midwife, midwife drop - ins and under 2's sessions. External agencies such as the PCT, community health, parenting workshops, Cook and Eat and Enhanceable may be accessed

through the Centre. The local community uses the School for a parents' choir, Slimming World, church groups, Russian schools, NCT, outreach to Kingsnympton from the NKCC staff, Dance – Bites and Super Sharks. Other community groups such as Old Latchmerians, Community Police, dental hygiene and health, libraries and the Job Centre all come into school to work with the children. Home Start also visits the school. The community has expressed the need for a Fathers' group.

Mecklenburg and Malden Oaks Pupil Referral Unit- At present the school has no real links with the community.

St Agatha's Catholic Primary School-The local community uses the school for Tae Kwon Do classes and charity events organised by ex pupils.

St John's CE Primary School- The local community access the school hall and classrooms for activities by Kingston orchestra, local church, road safety cycling proficiency and local community meetings. The Kingston College, museum, library, university and Bedelsford are all linked to the school

St Joseph's Catholic Primary School- The school has access to the Kingston Town Children's Centre next to King Athelstan School. The school offers their car park for local community events such as Kingston Grammar School open days, to the general public for sports events on at the Fairfield, to St Raphael's church for parish events and PTA quiz nights. Bedelsford, King Athelstan and St Joseph's are developing partnership through year group events or attending events at their schools. St Joseph's takes in volunteers on work experience from local schools, churches and parish volunteers.

St Luke's CE Primary School-The local community access St Luke's for the use of the playground and music rooms for festivals and church functions. The school has links with Murray house and a committee has been set up to coordinate this. There are also close links with St Luke's Church community, Tiffin schools and Hollyfield who run activities, as well as evenings at Greycourt School.

St Paul's CE Junior School-The school hall is used by a local choir and the church Sunday school uses part of the school for its activities. Church groups use the school on Friday lunchtimes and the Tuesday Evergreen Club visits the school and the school also attends some of their meetings.

Tiffin Girls School- The school is able to offer to the community the ability to hire their astro turf pitches, netball and tennis courts, hall, and 2 gyms. The Tiffin Old Girls Association has been running for over 100 years and is open to any students of past years. Currently Thames Youth Orchestra rehearse every week on this site. The Community Sports Centre is used by a range of hockey and netball clubs from Kingston, Teddington, Mitcham, Kew, Carshalton and other parts of Surrey. Rosemary Conley fitness, Tae Kwon Do, children's football clubs and children's parties also take place. Paul Livesi runs tennis coaching from this site. The Schools Sports Co-ordinator in

conjunction with our Junior and Community Sports Leaders run sports festivals for a wide range of primary schools.

Tiffin Boys School- The school offers to the community the hire of its lecture theatre, hall, classrooms for meetings and also the ability to hire catering facilities. Currently the hall is used by Kingston badminton club, Kingston university cricket club, Kingston Street Dance Company, and Kingston rowing club. Kingston Readers festival uses the school lecture theatre. There are also regular car boot sales held on site at the school. Tiffin has an outreach programme designed not only to bring specialist drama, music and dance teaching expertise into community schools but to introduce the school's staff and pupils to other local schools. Various schools not only in the Kingston town cluster have benefitted from this programme. Some of their after school activities are open to anyone in the borough, such as drama club, the Thames Youth Orchestra, the Children's Chorus and the boys dance company. Many of these activities are incorporated into special events within the borough such as art week performances and the Kingston festival of the voice concert. A key addition to the school is its sports centre with full community provision in the evenings, weekends and during the school holidays. It is open for bookings for a variety of sports and leisure activities for all ages,

**For more information please contact the Extended Schools Manager-
Laura-Jane Shaile
laura-jane.shaile@rbk.kingston.gov.uk**