



graduate2business

**FREE employment support
and advice for HE & level 4 FE
graduates living in Kingston**

Are you currently unemployed or at risk of becoming **unemployed?**

Do you **live in the Kingston area?**

Do you have a **degree or level 4 FE qualification?**

If so, graduate2business, a new **FREE** employment support service, can help **YOU!**



What is 'graduate2business'?

graduate2business is a new employment support initiative designed to help graduates living in Kingston through the current economic downturn. The service aims to offer practical employment and employability support to new and more experienced graduates alike.

Who is it for?

Regardless of when you graduated, if you live in Kingston and have a degree or a level 4 FE qualification, and are currently unemployed or at risk of unemployment, this service is for you.

You DO NOT have to be a recent or a Kingston University graduate.

Who funds it?

graduate2business is a joint initiative between Kingston University, the Royal Borough of Kingston, Kingston Chamber of Commerce and Kingston College. It is funded by the above partners and the Higher Education Funding Council for England through the Economic Challenge Investment Fund.

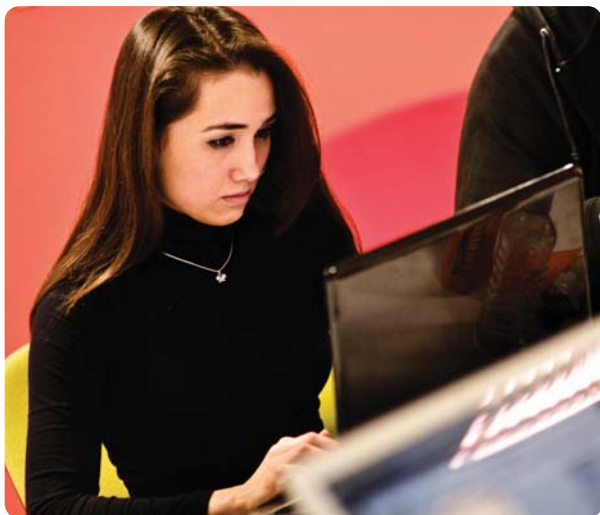
The funding and initiative will run until 30th September 2010.

How can we help you?

- One2One employment advice
- CV workshops
- Interview preparation
- Jobsearch support
- Application advice
- Jobseeker bootcamps
- Possible internships or projects to boost your CV
- Networking opportunities
- Fee remission on future training courses
- Kingston **Executive Futures** service for more experienced, professional graduates

Want to find out more?

There's really no catch! The government and Kingston partners have given the funding to help graduates through the economic downturn.



✉ g2b@kingston.ac.uk
☎ 020 8417 7445
www.kingston.ac.uk/g2b

Supported by

Kingston University London

THE ROYAL
BOROUGH OF
KINGSTON
CHAMBER OF
COMMERCE



 **KINGSTON**
College
for further, higher and adult education

HIGHER EDUCATION
FUNDING COUNCIL
hefce
FOR ENGLAND