



## CHILD PROTECTION INFORMATION FOR LSCB MEETING ON 3/12/09

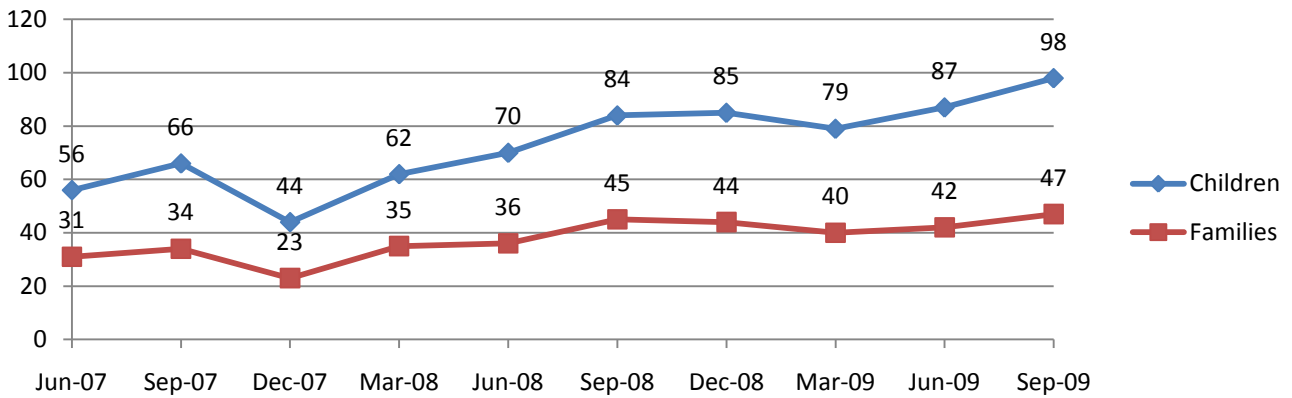
Information from 01/04/09 to 30/9/09

Children subject of Child Protection Activity from 1/4/09- 30/9/09	
No. of children subject of Section 47 enquiries that were concluded in the period.	62 children / 66 S47s
No. of children considered at Initial Child Protection Conference (ICPC)	43 children / 26 ICPCs
No. of children made subject of child protection plans from the 26 ICPCs	40 (includes 9 unborn)
No. of children not made subject of child protection plans from the 26 ICPCs	3 children from 2 families
No. of children subject of ICPC who have previously had a CP Plan	2 from 1 family
No. of children considered at the 59 review conferences	111 from 59 families
No. of children whose CP Plan concluded	21 from 16 families
No. of review conferences held on time	100%
How long subject of a CP Plan at 30/9/09: a) Less than 1 year b) Between 1 – 2 years c) Over 2 years	a) 69 children b) 20 children c) 9 children (4 families)
Total no. of conferences / children: a) Initial b) Review	85 / 154 a) 26 considering 43 children b) 59 considering 111 children
Parental / family members attendance at the 84 conferences:	75 conferences had at least 1 family member attend = 89%
CP Plan sent out within 48 hours to all core group members	100%
Distribution of conference minutes within 15 working days	62/84 on time (74%)
Children subject of a cp plan with a qualified allocated social worker	100%

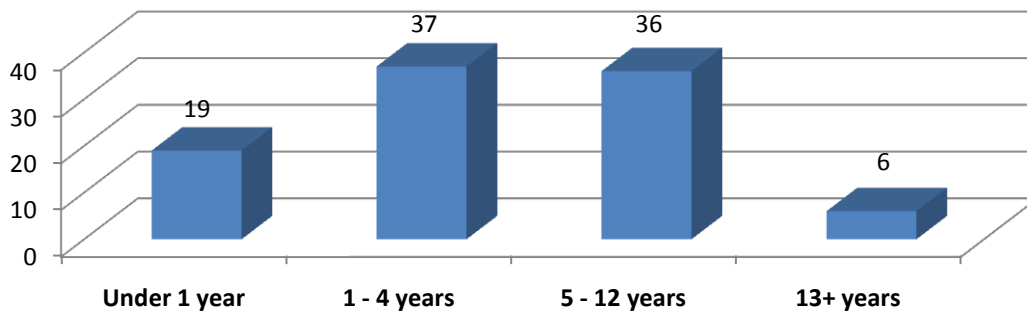
### Details of the 87 Children with Child Protection Plans as of 30/9/09

- **Genders** – 46 girls and 50 boys + 2 unborn
- **Disability** – 5 children of whom 1 girl & 3 boys have Autistic Spectrum Disorder (ASD) although none are open to the Disabled Children's Team.

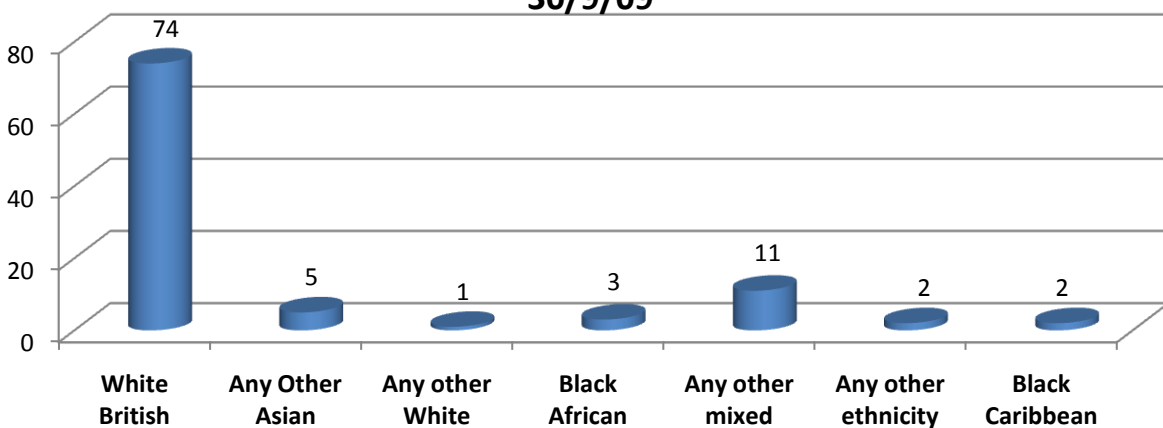
**Numbers of Children/Families subject of child protection plans, quarter ending:-**



**Age spread of children subject of child protection plans as of 30/9/09**

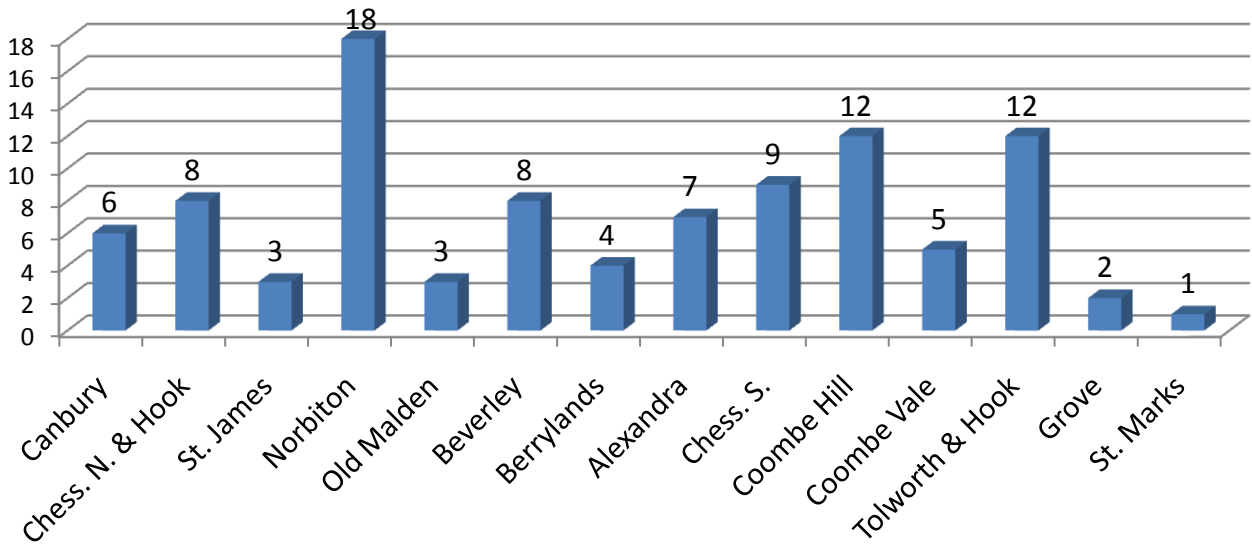


**Ethnicity spread of children subject of child protection plans as of 30/9/09**



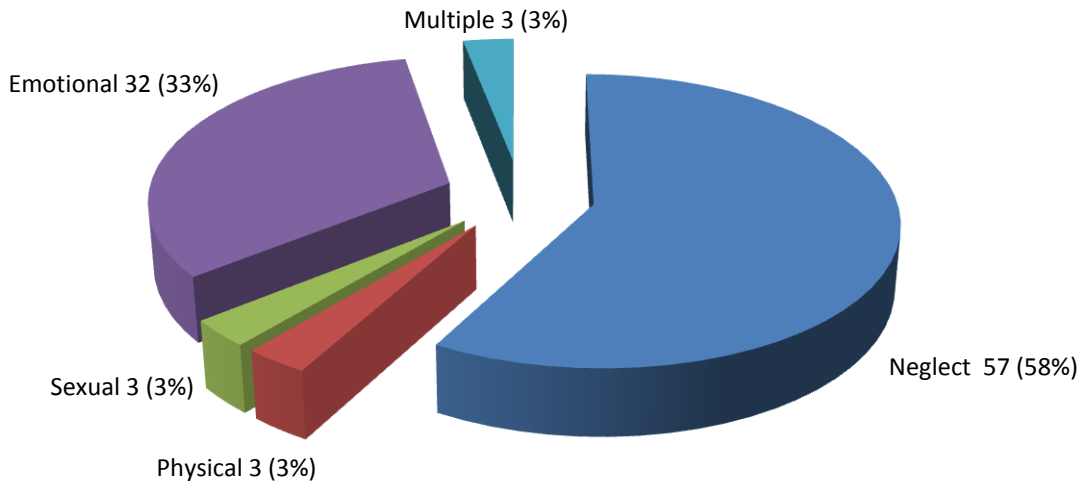
Ages of ethnic minorities children: 0(x5), 1(x6), 2(x2), 4(x3), 5(x1), 6(x3), 8(x3), 9(x1)

**Children subject of child protection plans as at 30/9/09 by Ward of home address at point of initial conference**



There are no children subject of CP plans from Surbiton Hill or Tudor wards

**Children subject of child protection plans by category of abuse as of 30/9/09**



<b>Significant Factors affecting the 43 Children (including 8 unborn) &amp; their Families subject of the 26 Initial CP Conferences held 01/04/09 – 30/09/09</b>	
Parent thought to have an undiagnosed mental health difficulty	2/263
Parent with a diagnosed mental health illness	3/26
Parent receiving a CMHT service	2/26
Parent receiving inpatient treatment for mental health illness under Section	0/26
Domestic abuse either currently or previously a factor	17/26
Injunction, bail restrictions in place, offender cautioned or in custody	6/26
Previous child removed or not in parents' care	5/26
Care proceedings actual or likely	7/26
Residence application by extended family	0/26
Lone parent	17/26
Parent is / was in care and /or a care leaver	3/26
Parent previously subject of a child protection plan	3/26
Parent aged 21 or under	3/26
Child with a disability	1/26
Child placed with extended family members	1/26
Child receiving regular respite from a foster carer	0/26
Looked after child	0/26
Large families (4 plus children) One family of 6 children moved into Kingston.	2/26
Drug misuse	7/26
Alcohol misuse	4/26
Drug & alcohol misuse	8/26
Parent receiving treatment for substance misuse	4/26
Neo natal substance misuse, actual or likely	5/26
Parent involved in internet offending	1/26

Parent deemed to pose a risk to children in general	0/26
Parents subject to statutory supervision (Probation)	4/26
Parent has been resident in the UK for less than 5 years	2/26
Parent with a diagnosed learning disability or believed to have one	3/26
Housing problems including arrears	13/26
Non / poor school attendance	5/26
Child previously been subject of a CP Plan in Kingston	1/26
Child previously been subject of a CP Plan in another L.A.	4/26

### Key Trends in Child Protection Activity

- Over the last 3 years, child protection activity has steadily increased. In the year ending March 2007, 48 children were subject of child protection plans. This number increased to 62 in the year ending March 2008. At the end of this half year, 98 children were subject of cp plans.
- Nationally the number of children being made subject of a cp plan for the year ending March 2007 was 30 children per 10 000 population. Kingston's figure increased from 15 per 10 000 for the year ending March 2007 to 20 per 10 000 year ending 2008. At the end of June 2009 this figure was 27.5 per 10 000 population.
- The year ending 2008, 148 children were subject of 78 review conferences, an increase from the previous year of 119 children and that was an increase on the previous year's number of 101 reviewed children. For the year ending March 2009, 210 children have been reviewed at 114 conferences, indicating the ongoing increasing trend. In the first half of this year, 111 children have been reviewed at 59 review conferences.
- The year ending March 2008, the number of unborn children newly having a cp plan increased to 15 compared to 6 the previous year. Last year ending March 2009, 9 unborn babies have been made subject of cp plans, with drug & alcohol misuse and domestic abuse all being significant factors. So far this year 8 unborn babies have been considered at initial conferences.
- Greater awareness of domestic abuse and better services continue to lead to increased numbers of families where domestic abuse is an issue. Domestic abuse as a factor in children subject of initial conferences currently this year affects two thirds of families. In the years ending 2008 and 2007, this figure was just under 50%. Many of the families affected by domestic violence are also affected by alcohol and housing.

- Despite the large proportion of domestic abuse, only 6 families were protected either by an injunction, bail conditions or custody from the perpetrator, or the perpetrator had received a caution.
- Drugs and / or alcohol misuse continues to affect a significant proportion of families considered at initial conference. Nearly 75% of families considered at initial cp conferences were affected by a parent with substance misuse. However only 15% were receiving any treatment. This figure is a significant increase as in the previous 2 years it affected about 50% families.
- In 7 of the families last year, care proceedings were either underway or likely to occur. In the first half of this year this figure is already 7, in line with a national increase of public court proceedings.
- Only 1 child this half year had been previously subject of a cp plan compared to five children from 4 families last year which represented 11.5 per 10 000 of Kingston's population. Nationally at the end of March 2007, this figure was 13 per 10 000.
- None of the children who ceased to be subject of a plan had been the subject of a plan for over 2 years. Nationally this figure at the end of March 2007 was 6%. The child protection service manager monitors children as they go into their second year subject of a cp plan and reports to DMT on a regular basis. However there are currently 9 children from 4 families who have been the subject of cp plans for longer than 2 years.
- Neglect continues to be the most frequently used category and at the end of this half year accounted for 58% of children. Emotional abuse has continued to increase to 33%. Sexual and physical abuse accounted for 3% each. Three children (3%) received a cp plan under more than 1 category.
- So far none of the adult carers were considered to be a 'Risk to Children'. The child protection process identifies these individuals and ensures that they are flagged on the Social Care data base.
- There was only 1 children with a disability considered at the 26 initial cp conferences this year. However at the end of the half year there were 5 children with disabilities, representing 5% of children with cp plans.
- Housing difficulties at 50% continue to account for a significant proportion of families.
- The other significant factor this quarter was that over 65% of the families considered at initial conference were headed by a single parent. This is an increase as generally this figure is about 50%.
- There were 22 children from 17 families from other Local Authorities on Kingston's temporary list of children subject of cp plans year this quarter.

Age groups as follows:

Under 1s = 2 children; 1-4 years = 9 children; 5-12 years = 9; 13 plus = 2.