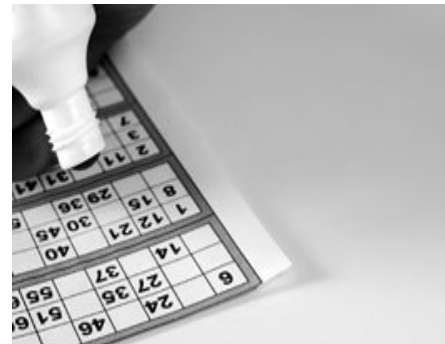


Bingo

What do we mean by 'bingo'?

Commercially run clubs, halls and other organisations that provide bingo games in a club or location open to the public, as well as those that offer bingo remotely (for example over the internet or by using a machine), must be licensed by the Gambling Commission.

Non-remote licences allow bingo to be offered in premises and remote licences allow for bingo to be played over the internet or through other communications device, or by using a machine.



Non-remote licensees who wish to offer their customers facilities for playing bingo by using remote communication equipment (all of which must be located on the premises), can apply for an ancillary remote operating licence.

Bingo halls are also permitted to have certain gaming machines on the premises.

Bingo licensees must not employ children (under 16s) or young people (16 and 17 year olds) to carry out tasks that relate to the provision of facilities for gambling – this includes tasks such as selling bingo books or tickets, handing out TED* machines, identifying winning players or paying out winnings/prizes, or any task in connection with a gaming machine.

How is bingo regulated?

Most organisations and individuals that provide facilities for playing bingo require a licence to operate, whether the facilities are provided remotely (for example through the internet or telephone), or in premises. The Commission has developed licence conditions and codes of practice that govern licence holders and it can prosecute or impose fines on operators who breach their licence conditions.

There are three types of licence for those providing bingo:

- Operating licences are required by those that provide facilities for bingo in Britain.
- Personal licences are required by individuals in certain management positions except for those organisations categorised as small-scale operators.
- Premises licences are required where gambling services are provided to the public from fixed premises rather than remotely. These are issued by the local licensing authority.

Bingo facts and figures

- People mainly play bingo in dedicated bingo halls, holiday parks and resorts, although it is also popular in working men's and British Legion clubs and miners' institutes.
- There are over 650 dedicated bingo clubs operating at 31 March 2007, and over 1,000 other clubs and smaller institutions where bingo is played.
- £1,820 million was staked at bingo halls in 2006/07.
- The average spend is around £16.90 a night.
- Bingo is the only gambling activity more popular with women than men.

* TED - an electronic hand held system that allows people to play multiple packs at the same time

Gambling Commission August 2007

The Gambling Commission regulates gambling in the public interest. It does so by keeping crime out of gambling, by ensuring that gambling is conducted fairly and openly, and by protecting children and vulnerable people from being harmed or exploited by gambling. The Commission also provides independent advice to government on gambling in Britain. For further information or to register your interest in the Commission please visit our website at: www.gamblingcommission.gov.uk